

# New York Central

# New York Central

KEEP



Effective February 3, 1935—Form 1001



Effective February 3, 1935—Form 1001



## Reference Marks

* Daily.	Meal station.
† Sunday only.	◆ This train does not carry baggage.
‡ Daily except Sunday.	Ex. Sun.—Runs daily except Sunday.
§ Daily except Monday.	E.T.—Eastern Standard Time.
‡ Daily except Saturday.	C.T.—Central Standard Time.
a Stops except Sunday on signal to discharge passengers from Buffalo and stations east and to receive passengers for Cleveland and stations beyond.	
aa Stops to receive or discharge passengers for or from Ashtabula and beyond.	
b Stops except Saturdays and Sundays.	
c Stops on signal to receive passengers for P. & L. E. stations or for Waterloo, Ind. and beyond.	
d Stops on signal to receive passengers for Troy and beyond.	
e Stops on signal to discharge passengers from Buffalo and beyond and to receive for Chicago.	
f Stops on signal to discharge or receive passengers.	
g No baggage handled for or from this station.	
h Stops regularly, but only to receive passengers.	
hh Stops on signal to receive passengers for Montreal and beyond.	
i Stops only to discharge passengers.	
jj Stops on signal to receive or discharge passengers for or from Rhinecliff and beyond.	
k Runs Saturdays only.	
n Stops on signal to receive passengers for Toledo and beyond.	
nn Stops on signal at 11.06 p. m. to receive passengers for Detroit and beyond or to discharge passengers from points on the B. & A. R. R. east of Albany.	
p Makes regular stops week-days. Stops on signal Sunday nights to receive for Danville and beyond.	
r Carries passengers in Pullman Cars only.	
s Stops Sundays only.	
t Stops on signal to receive or discharge passengers for or from Millerton and stations beyond.	
u By connecting train.	
w Stops on signal to discharge passengers from Cleveland and stations beyond or to receive passengers for Pittsburgh.	
ww Stops on signal to receive passengers for Chicago.	
v Stops on signal to receive or discharge passengers for or from Detroit and beyond.	
A Stops to discharge passengers from Toledo and beyond.	
AA Stops to discharge passengers from beyond Toledo.	
B Stops to discharge passengers from Albany and stations beyond.	
BB Stops Feb. 22 only to receive New York passengers.	
C Stops on signal to discharge passengers from Buffalo and stations beyond.	
CC Stops on signal to receive passengers.	
D Stops Fridays and Saturdays only.	
DD Stops on signal at 10.00 p. m. to discharge passengers from New York and to receive passengers for Cleveland and beyond.	
E Stops to discharge passengers from Cleveland and beyond.	
F Stops Sundays only on signal to discharge passengers from Chicago.	
FF Stops except Sunday on signal to receive passengers for Cleveland and beyond.	
G Stops on signal to discharge passengers from Utica and stations beyond.	
GG Stops Sundays and Holidays to receive passengers for Gary or Chicago.	
H Arrives at or leaves from Erie R. R. Station, Cleveland.	
HH Stops Fridays only to discharge New York passengers.	
J Through cars from Pittsburgh leave from Erie R. R. station at 3.45 p. m.	
JJ Stops on signal to discharge passengers from beyond Utica.	
L Through cars for Pittsburgh arrive at Erie R. R. station at 5.45 p. m.	
LL Stops on signal to discharge passengers from P. & L. E. stations.	
M Stops on signal to receive passengers for stations beyond Buffalo or for stations on the Adirondack Division.	
N Stops on signal to discharge passengers from points beyond Buffalo.	
NN Stops on signal to receive passengers for La Porte and beyond.	
P Westbound trains stop on signal to discharge passengers from New York or Boston; eastbound trains stop on signal to receive passengers for New York or Boston.	
R Stops on signal to receive passengers for Cleveland and beyond.	
RR Stops on signal to receive or discharge passengers for or from points on the Boston and Albany Railroad.	
T Stops on signal to receive passengers for stations beyond Buffalo.	
U Stops on signal to receive passengers for Buffalo and beyond.	
W Stops to discharge passengers from Chicago and beyond.	
X North and Westbound trains stop only to discharge passengers from New York City; East and Southbound trains stop only to receive passengers for N. Y. City.	
Y Stops on signal to receive passengers for Albany and beyond.	
Z Stops Saturdays only.	

# AIR CONDITIONING

## an all-year feature of New York Central Lines *Service*

Cooling the cars to a comfortable degree of temperature in hot weather is only half the story of air-conditioning.

It is just as effective in cold weather. It keeps the air in circulation, without drafts, at the right degree of warmth and humidity to give the greatest comfort.

It cleanses the air, freeing it from dust, dirt and cinders.

It shuts out noise and insures a clean, quiet, comfortable ride.

The principal trains of the New York Central Lines between New York and Cleveland, Detroit, Chicago, Cincinnati, Indianapolis and St. Louis are air-conditioned.

# Visit HISTORIC GREENFIELD VILLAGE and the EDISON MUSEUM

*A living textbook of the handicraft arts of the past and of human and technical history*

**H**ISTORIC Greenfield Village and the Edison Institute Museum are of such great interest that thousands are drawn to Detroit, the Motor City, to visit them.

There are two ways of recording history. One by textbooks, the other by exhibits. There are two kinds of exhibits—the "Madame Tussaud" type and the living, working exhibits which reenact the dramas of the past.

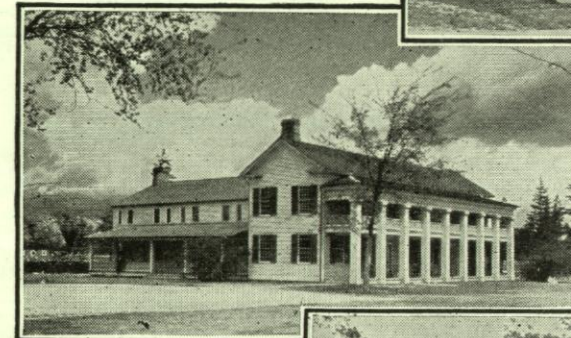
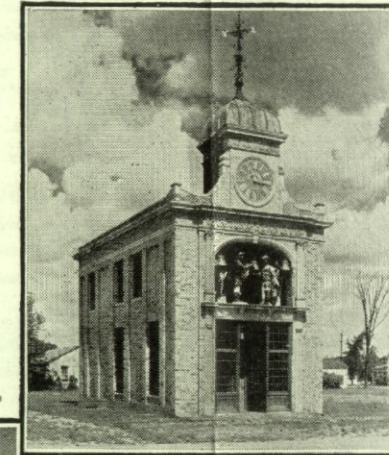
At historic Greenfield Village in Dearborn, nine miles from downtown Detroit, you will find more than the "properties" of the early American scene . . . As your carriage skirts the "green" you may wonder if the village smith would be too busy at the moment to shoe your horses should they need it. But as you peer in at his door, you see him at the forge—busy, be-

cause he keeps the horses of the village shod—but not too busy to show his handiwork.

Thus you visit many enchanting places and see so many periods and activities of the long ago that you may—as some are said to do—pinch yourself to know that you're awake.

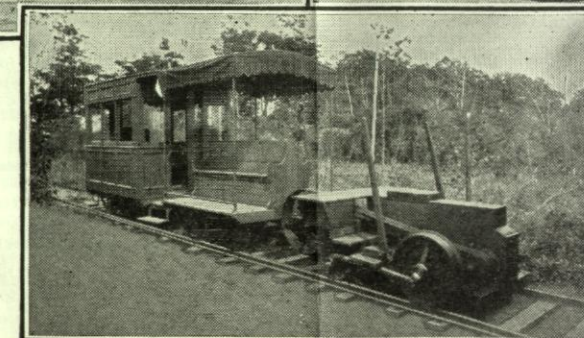
Of paramount interest, particularly to the student type of mind, is the Edison Institute, named by Henry Ford, after his friend, Thomas

A. Edison. This 200-acre educational project, to which the separate village is really supplementary, is served by a museum that presents a fascinating pageant of human and technical history. Don't fail to visit this amazing array of Americana. Plan to see it on your next trip. Your New York Central Lines ticket permits stopover at Detroit without extra charge.



First stop on your visit. Clinton Inn was erected 100 years ago in Clinton, Mich. Up to the early fifties was overnight stop on Detroit-Chicago stagecoach run.

At top—Cheapside, in the heart of London, kept an ear always turned toward Sir John Bennett's Jewelry Shop. The effigies on the facade still strike the hours.



Menlo Park Laboratory—Here the first phonograph was produced, also the practical incandescent lamp, along with numerous other inventions, including the microphone and telephone transmitter. Mr. Francis Jehl, who assisted Mr. Edison at the invention of the light, is in charge of the laboratory.

At bottom—This is but one of the remarkable contrivances made by Edison. His first electric locomotive, made and operated in 1880.

You Can Sleep



D. E. GELATT, Flight Traffic Manager, 466 Lexington Ave., New York, N. Y.  
F. O. STAFFORD, Freight Traffic Manager, LaSalle St. Station, Chicago, Ill.  
B. R. BRENNAN, Asst. Flight Traffic Manager, Engineers Bldg., Cleveland, O.  
C. H. MARK, Coal Freight Agent, 466 Lexington Ave., New York, N. Y.  
E. L. WHITNEY, General Freight Agent, LaSalle St. Station, Chicago, Ill.  
W. R. DALLOW, Industrial Agent, 466 Lexington Ave., New York, N. Y.  
E. J. DOWIE, Industrial Agent, Engineers Bldg., Cleveland, O.  
C. H. MARK, Coal Freight Agent, 466 Lexington Ave., New York, N. Y.  
ALAN MCMICHAEL, Coal Freight Agent, 466 Lexington Ave., New York, N. Y.  
P. P. BELITZ, Coal & Ore Agent, Engineers Bldg., Cleveland, O.

		Telephone No.	
Milwaukee, Wis.	F. C. Jansens, Gen. Agt., Fght. Dept.	Daily	
408 Guaranty Bldg.	A. W. Morahan, Gen. Agt., Fght. Dept.	5660-1-2	
Minneapolis, Minn.	F. J. Bamback, Gen. Agt., Pass. Dept.	Atlantic	
808 Met'nian Life Bldg.	A. W. Behrens, Gen. Agt., Fght. Dept.	5291-2-3	
Montreal, Que.	J. B. Finucane, Can'n Fgt. & Pass. Agt.	Marquette	
221 Board of Trade Bldg.		1271-1272	
Newark, N. J.	W. F. Francis, City Passenger Agent...	Market 2-5415-7	
9-16 Clinton St.	R. Von Steuben, Gen. Agt., Fght. Dept	Market 2-4560	
New Haven, Conn.	V. S. Karlawish, District Pass. Agt.	—6-9161	
205 Church St.	D. C. Heffernan, Gen. Agt., Fght. Dept.	—6-5173-4	
New Orleans, La.	P. J. Stenger, Traveling Pass. Agt.		
502 Per Marquette Bldg.	J. G. Willcock, Gen. Agt., Fght. Dept.	Main 1283	
New York, N. Y.			
466 Lexington Ave.	A. L. Miller, Asst. Gen. Pass. Agt.	Murray Hill	
466 Lexington Ave.	H. Hahn, Div. Fght. Agt.	2-3000	
299 Broadway	F. C. Jerome, Asst. Gen. Fght. Agt.	Worth 2-0600	
6 Beaver St.	J. F. Brady, Foreign Fgt. Agt.	Bowling Green	
		9-5800	
Niagara Falls, N. Y.	C. F. McDonald, District Pass. Agt.	—1287	
Oklahoma City, Okla.	J. A. Slater, Gen. Agt., Pass. Dept.	—7-3440	
Room 1200 Colcord Bldg.			
Omaha, Neb.	J. F. Dyas, Gen. Agt., Pass. Dept.		
921-924 City National Bank Bldg.	R. J. Ross, Gen. Agt., Fght. Dept.	Atlantic 8900	
Ottawa, Ont.	G. C. Hamilton, Traveling Fght. & Pass. Agt.—Queen 2294		
Peoria, Ill.	G. B. Gihlon, Traveling Pass. Agt.	—8500	
Jefferson Bldg.	H. R. Daly, City Passenger Agt.		
Philadelphia, Pa.	B. D. Dwyer, Gen. Agt., Fght. Dept.	Rittenhouse 1370	
906 Finance Bldg.			
Phoenix, Ariz.	R. E. McClintic, Traveling Fght. & Pass. Agt.—31564		
706 Security Bldg.			
Pittsburgh, Pa.	R. H. Douth, Asst. Gen. Fght. Agt.	Atlantic 7650-	
Union Trust Bldg.		1-2-3	
506 Wm. Penn Way	E. N. Robison, District Pass. Agent.	Court 3201	
Portland, Ore.	C. J. Barry, District Pass. Agt.	Beacon 2370	
411-12 Pacific Bldg.	J. F. Scanlin, Gen. Agt., Fght. Dept.		
Rochester, N. Y.	J. F. Martin, Div. Fght. Agt.		
N. Y. C. R. R. Sta.	R. K. Horton, Div. Fght. Agt.	Main 6100	
St. Louis, Mo.			
320 North Broadway	J. P. Corcoran, Asst. Gen. Pass. Agt.	Main 4288	
408 Pine Street	S. A. Townsend, Div. Fght. Agt.		
St. Paul, Minn.	A. M. Nye, Gen. Agt., Pass. Dept.	Garfield 5331	
402 Pioneer Bldg.	George Munro, Gen. Agt., Fght. Dept.		
San Francisco, Calif.	H. Bostwick, Gen. Agt., Pass. Dept.		
523 Menadnock Bldg.	W. W. Dickinson, Gen. Agt., Fght. Dept.	Kearney 3682	
Seattle, Wash.	T. E. Nerland, Gen. Agt., Pass. Dept.		
612-514 White Bldg.	A. W. Cassels, Gen. Agt., Fght. Dept.	Elliott 2681	
South Bend, Ind.	W. H. Grounds, Gen. Agt., Fght. Dept.	—4-1400	
Union Station			
Springfield, Mass.	R. D. Fuller, District Pass. Agt.		
Union Station	H. A. Noble Division Fght. Agt.	—6-5431	
Syracuse, N. Y.	R. W. Bratton, Div. Pass. Agt.	Phone 2-8794	
Herald Bldg.	R. C. Hopkins, Div. Fght. Agt.	—Phone 2-0271	
Toledo, O.			
211 Superior St., Nicholas Bldg.	E. C. Cook, Div. Pass. Agt.		
	C. F. Swisher, Div. Fght. Agt.	Main 1181	
Toronto, Ont.	F. C. Foy, Canadian Pass. Agt.		
428 Royal Bank Bldg.	H. D. Snazel, Canadian Fght. Agt.	Elgin 8379	
Tulsa, Okla.	Richard Mercer, City Passenger Agt.		
437 Arcade Bldg.	S. D. Powers, Gen. Agt., Fght. Dept.	35741	
Utica, N. Y.	Lewis Crane, Div. Fght. & Pass. Agt.—Phone 4-2111		
Watertown, N. Y.	H. J. French, Jr., Div. Fght. & Pass. Agt.—Phone 2100		
Winston-Salem, N. C.	T. H. Willings, Gen. Agt., Fght. Dept.—Phone 8333		
1408-10 Reynolds Bldg.			
Worcester, Mass.	J. E. Sweeney, District Pass. Agt.	—2-4104	
Union Station	S. Lancaster, Division Fght. Agt.	—Phone 5-2511	
Youngstown, Ohio			
N. Y. C. R. R. Sta.	F. M. Browne, Pass. & Ticket Agent...	34151	
City Bank Bldg.	F. H. Meahl, Div. Freight Agt.		

**INDEX TO STATIONS SHOWN IN THIS FOLDER**

Stations are Indexed Under Table Numbers, Not Page Numbers. Information about other stations on the N. Y. Cent. R.R. may be had upon application to Ticket Agents

\_\_\_\_\_



## TRAVEL by TRAIN

### And When You Get There Hire a Car and Drive it Yourself

LEAVE your automobile at home and take advantage of the arrangements the New York Central Lines have made with responsible automobile companies for "Drive Yourself" service at reasonable costs.

These arrangements apply at the following cities:

Albany, N. Y.	Lansing, Mich.
Ann Arbor, Mich.	Louisville, Ky.
Bay City, Mich.	New York City
Buffalo, N. Y.	Niagara Falls, N. Y.
Chicago, Ill.	Pittsburgh, Pa.
Cincinnati, Ohio	Rochester, N. Y.
Cleveland, Ohio	Saginaw, Mich.
Columbus, Ohio	St. Louis, Mo.
Dayton, Ohio	Schenectady, N. Y.
Detroit, Mich.	South Bend, Ind.
Evansville, Ind.	Springfield, Ohio
Grand Rapids, Mich.	Syracuse, N. Y.
Indianapolis, Ind.	Terre Haute, Ind.
Jackson, Mich.	Toledo, Ohio
Kalamazoo, Mich.	Troy, N. Y.
Lafayette, Ind.	Watertown, N. Y.

Any ticket agent will be glad to give complete details regarding this service. Arrangements for an automobile may be made by applying to Ticket Agent at any of the above cities, upon arrival.

## THE EASY WAY TO SEND PACKAGES—by RAILWAY EXPRESS

YOUR packages are sure to be safe, sound and on time when you ship them by Railway Express. Merely telephone the nearest Railway Express office and a courteous Railway Expressman will call at your door—a service that is maintained in all principal cities and towns.

From the very moment the Railway Expressman takes charge of your shipment your worries are over. He will give you a receipt and speed your packages away on fast passenger trains to destination, where another receipt is taken proving delivery. There is no easier way, no safer way and no quicker way.

*The best there is in transportation*

NATION-  
WIDE  
SERVICE

**RAILWAY EXPRESS**  
Agency, Inc.

SERVING  
THE NATION  
FOR 95 YEARS



## Now 3 tickets take 2 passengers and 1 automobile!

All the fun and convenience of having your car at the end of your trip . . . but none of the delay and expense . . . none of the wear and tear . . . of driving it *to* and *from* your destination!

The three ticket Auto-Passenger plan of the New York Central enables shipment of automobiles in expedited freight service on one ticket and permits one or two passengers to travel on the other two tickets. Minimum charge for two passengers and automobile \$54.00.

So enjoy the speed and comfort . . . the restful relaxation . . . of *train* travel . . . avoid the expense of gasoline, oil, garages, washes and hotel bills . . . and still have your car in perfect condition when you arrive.

Ship your car to practically any point in the United States. It is economical. Your New York Central Lines ticket or freight agent will gladly give complete information and make all arrangements.

*Ticket your car via*

# NEW YORK CENTRAL LINES

## RAILROAD AND PULLMAN FARES (PULLMAN FARES INCLUDE SURCHARGE)

Between And	NEW YORK										BOSTON										BUFFALO									
	Railroad Fare	Parlor Car		Sleeping Car						Railroad Fare	Parlor Car		Sleeping Car						Railroad Fare	Parlor Car		Sleeping Car								
		Seat	Drawing Room	Lower Berth	Upper Berth	●Section One Person	●Section Two Persons	●S'gleor D'ble ★Bedroom	Compartment	Drawing Room		Seat	Drawing Room	Lower Berth	Upper Berth	●Section One Person	●Section Two Persons	●S'gleor D'ble ★Bedroom	Compartment	Drawing Room		Seat	Drawing Room	Lower Berth	Upper Berth	●Section One Person	●Section Two Persons	●S'gleor D'ble ★Bedroom	Compartment	Drawing Room
Albany, N. Y.	5.13	1.13	5.63	3.00	2.40	4.20	4.80	.....	9.00	10.50	7.23	1.50	7.50	3.00	2.40	4.20	4.80	.....	9.00	10.50	10.59	2.25	10.50	3.00	2.40	4.20	4.80	.....	9.00	10.50
Ashtabula, O.	20.29	3.75	18.75	5.63	4.50	7.88	9.00	10.13	15.75	21.00	22.46	.....	.....	6.38	5.10	8.93	10.20	11.48	18.00	22.50	17.82	3.00	15.00	4.50	3.60	6.30	7.20	12.75	16.50	
Boston, Mass.	15.72	3.00	13.50	3.75	3.00	5.25	6.00	6.75	10.50	13.50	17.82	3.00	15.00	4.50	3.60	6.30	7.20	12.75	16.50	18.81	3.38	16.88	5.63	4.50	7.88	9.00	10.13	15.75	21.00	
Buffalo, N. Y.	32.70	3.00	13.50	3.75	3.00	5.25	6.00	6.75	10.50	13.50	36.63	3.00	15.00	4.50	3.60	6.30	7.20	12.75	16.50	18.81	3.38	16.88	5.63	4.50	7.88	9.00	10.13	15.75	21.00	
Chicago, Ill.	27.01	3.00	13.50	3.75	3.00	5.25	6.00	6.75	10.50	13.50	33.61	3.00	15.00	4.50	3.60	6.30	7.20	12.75	16.50	18.81	3.38	16.88	5.63	4.50	7.88	9.00	10.13	15.75	21.00	
Cincinnati, O.	20.55	3.75	18.75	5.63	4.50	7.88	9.00	10.13	15.75	21.00	24.46	.....	.....	6.38	5.10	8.93	10.20	11.48	18.00	22.50	15.79	2.85	14.25	4.50	3.60	6.30	7.20	12.75	16.50	
Cleveland, O.	22.70	3.75	18.75	5.63	4.50	7.88	9.00	10.13	15.75	21.00	29.43	.....	.....	6.38	5.10	8.93	10.20	11.48	18.00	22.50	6.64	1.35	6.75	3.75	3.00	5.25	6.00	10.50	13.50	
Columbus, O.	25.24	3.75	18.75	5.63	4.50	7.88	9.00	10.13	15.75	21.00	31.93	.....	.....	6.38	5.10	8.93	10.20	11.48	18.00	22.50	11.61	.....	.....	3.75	3.00	5.25	6.00	10.50	13.50	
Dayton, O.	25.24	3.75	18.75	5.63	4.50	7.88	9.00	10.13	15.75	21.00	31.93	.....	.....	8.25	6.60	11.55	13.20	23.25	30.00	14.11	.....	.....	4.13	3.30	5.78	6.60	12.00	15.00		
Detroit, Mich.	24.82	4.73	22.50	6.38	5.10	8.93	10.20	11.48	18.00	22.50	26.82	.....	.....	7.50	6.00	10.50	12.00	21.00	27.00	.....	1.88	9.38	3.00	2.40	4.20	4.80	9.00	10.50		
Erie, Pa.	18.89	3.75	16.50	4.50	3.60	6.30	7.20	8.10	12.75	16.50	20.99	.....	.....	5.63	4.50	7.88	9.00	15.75	21.00	.....	3.17	7.75	3.75	3.00	2.40	4.20	4.80	9.00	10.50	
Grand Rapids, Mich.	29.73	3.75	16.50	4.50	3.60	6.30	7.20	8.10	12.75	16.50	32.20	.....	.....	10.13	8.10	14.18	16.20	28.50	36.00	.....	13.91	.....	.....	4.50	3.60	6.30	7.20	12.75	16.50	
Indianapolis, Ind.	29.20	3.75	16.50	4.50	3.60	6.30	7.20	8.10	12.75	16.50	34.69	.....	.....	10.13	8.10	14.18	16.20	28.50	36.00	.....	16.87	.....	.....	5.63	4.50	7.88	9.00	15.75	21.00	
Lake Placid, N. Y.	13.64	2.85	13.50	3.75	3.00	5.25	6.00	6.75	10.50	13.50	15.74	.....	.....	3.75	3.00	5.25	6.00	10.50	13.50	.....	12.28	2.63	13.13	3.75	3.00	5.25	6.00	10.50	13.50	
Montreal, Que.	14.01	3.00	13.50	3.75	3.00	5.25	6.00	6.75	10.50	13.50	15.74	.....	.....	3.75	3.00	5.25	6.00	10.50	13.50	.....	15.17	.....	.....	4.50	3.60	6.30	7.20	12.75	16.50	
New York, N. Y.	16.63	3.00	13.50	3.75	3.00	5.25	6.00	6.75	10.50	13.50	18.73	.....	.....	4.50	3.60	6.30	7.20	12.75	16.50	.....	15.72	3.00	13.50	3.75	3.00	5.25	6.00	6.75	10.50	13.50
Niagara Falls, N. Y.	16.63	3.00	13.50	3.75	3.00	5.25	6.00	6.75	10.50	13.50	24.08	.....	.....	6.38	5.10	8.93	10.20	11.48	18.00	22.50	9.20	1.88	9.38	3.75	3.00	5.25	6.00	10.50	13.50	
Pittsburgh, Pa.	5.22	1.20	6.00	3.75	3.00	5.25	6.00	6.75	10.50	13.50	5.43	1.20	6.00	3.75	3.00	5.25	6.00	6.75	10.50	13.50	12.39	3.00	13.13	3.75	3.00	5.25	6.00	10.50	13.50	
Pittsfield, Mass.	13.35	2.78	13.50	3.75	3.00	5.25	6.00	6.75	10.50	13.50	15.45	3.00	15.00	4.50	3.60	6.30	7.20	12.75	16.50	.....	2.38	7.75	3.75	.....	.....	.....	.....	21.00	27.00	
Rochester, N. Y.	38.06	3.75	16.50	4.50	3.60	6.30	7.20	8.10	12.75	16.50	43.56	.....	.....	12.50	9.60	16.80	19.20	33.75	42.00	.....	25.74	.....	.....	7.50	6.00	10.50	12.00	15.00	19.50	
St. Louis, Mo.	29.74	3.75	16.50	4.50	3.60	6.30	7.20	8.10	12.75	16.50	33.65	.....	.....	9.00	7.20	12.60	14.40	25.50	31.50	.....	15.83	3.00	15.00	5.25	4.20	7.35	8.40	15.00	19.50	
South Bend, Ind.	10.45	2.18	10.50	3.00	2.40	4.20	4.80	10.13	15.75	21.00	12.55	2.48	12.38	3.75	3.00	5.25	6.00	10.50	13.50	.....	14.28	3.00	13.50	3.75	3.00	5.25	6.00	10.50	13.50	
Springfield, Mass.	24.39	3.75	16.50	4.50	3.60	6.30	7.20	8.10	12.75	16.50	28.30	.....	.....	8.25	6.60	11.55	13.20	23.25	30.00	.....	5.27	1.13	5.63	3.75	3.00	5.25	6.00	10.50	13.50	
Syracuse, N. Y.	8.54	1.80	9.00	3.00	2.40	4.20	4.80	10.13	15.75	21.00	10.64	1.80	9.00	3.00	2.40	4.20	4.80	10.13	15.75	21.00	7.99	1.58	7.88	3.00	2.40	4.20	4.80	9.00	10.50	
Toledo, O.	17.96	3.75	16.50	4.50	3.60	6.30	7.20	8.10	12.75	16.50	21.49	.....	.....	5.63	4.50	7.88	9.00	15.75	21.00	.....	7.99	.....	.....	3.75	3.00	5.25	6.00	10.50	13.50	
Toronto, Ont.	8.54	1.80	9.00	3.00	2.40	4.20	4.80	10.13	15.75	21.00	10.64	1.80	9.00	3.00	2.40	4.20	4.80	10.13	15.75	21.00	2.10	3.75	3.75	3.00	2.40	4.20	4.80	9.00	10.50	
Utica, N. Y.	11.69	2.48	12.38	3.75	3.00	5.25	6.00	6.75	10.50	13.50	13.79	2.48	12.38	3.75	3.00	5.25	6.00	6.75	10.50	13.50	16.22	3.00	15.00	4.50	3.60	6.30	7.20	12.75	16.50	
Watertown, N. Y.	17.82	3.45	16.50	4.50	3.60	6.30	7.20	8.10	12.75	16.50	20.00	.....	.....	5.63	4.50	7.88	9.00	15.75	21.00	.....	6.91	1.50	7.50	3.38	2.70	4.73	5.40	9.75	12.00	
Westfield, N. Y.	20.29	3.75	16.50	4.50	3.60	6.30	7.20	8.10	12.75	16.50	24.08	.....	.....	6.38	5.10	8.93	10.20	11.48	18.00	22.50	.....	.....	.....	.....	.....	.....	.....	.....	.....	
Worcester, Mass.	1.60	3.75	3.75	3.00	2.40	4.20	4.80	10.13	15.75	21.00	1.60	3.75	3.75	3.00	2.40	4.20	4.80	10.13	15.75	21.00	.....	.....	.....	.....	.....	.....	.....	.....	.....	
Youngstown, O.	20.29	3.75	16.50	4.50	3.60	6.30	7.20	8.10	12.75	16.50	24.08	.....	.....	6.38	5.10	8.93	10.20	11.48	18.00	22.50	.....	.....	.....	.....	.....	.....	.....	.....	.....	

Between And	CLEVELAND										TOLEDO										CHICAGO									
	Railroad Fare	Parlor Car		Sleeping Car						Railroad Fare	Parlor Car		Sleeping Car						Railroad Fare	Parlor Car		Sleeping Car								
		Seat	Drawing Room	Lower Berth	Upper Berth	●Section One Person	●Section Two Persons	●S'gleor D'ble ★Bedroom	Compartment	Drawing Room		Seat	Drawing Room	Lower Berth	Upper Berth	●Section One Person	●Section Two Persons	●S'gleor D'ble ★Bedroom	Compartment	Drawing Room		Seat	Drawing Room	Lower Berth	Upper Berth	●Section One Person	●Section Two Persons	●S'gleor D'ble ★Bedroom	Compartment	Drawing Room
Albany, N. Y.	17.23	3.60	16.50	4.50	3.60	6.30	7.20	8.10	12.75	16.50	21.07	4.35	21.75	6.38	5.10	8.93	10.20	11.48	18.00	22.50	29.40	.....	.....	8.25	6.60	11.55	13.20	14.85	23.25	30.00
Ashtabula, O.	2.04	.....	3.75	.....	.....	.....	.....	.....	.....	.....	5.88	1.20	6.00	3.00	2.40	4.20	4.80	.....	.....	10.50	14.30	2.70	13.50	3.75	3.00	5.25	6.00	10.50	13.50	
Boston, Mass.	24.46	.....	.....	6.38	5.10	8.93	10.20	11.48	18.00	22.50	28.30	.....	.....	8.25	6.60	11.55	13.20	23.25	30.00	.....	36.63	.....	.....	10.13	8.10	14.18	16.20	28.50	36.00	
Buffalo, N. Y.	6.64	1.35	6.75	3.75	3.00	5.25	6.00	6.75	10.50	13.50	10.48	2.10	10.50	3.75	3.00	5.25	6.00	10.50	13.50	.....	18.81	3.38	16.88	5.63	4.50	7.88	9.00	10.13	15.75	21.00
Chicago, Ill.	12.26	2.25	11.25	3.75	3.00	5.25	6.00	6.75	10.50	13.50	8.42	1.50	7.50	3.75	3.00	5.25	6.00	6.75	10.50	13.50	.....	.....	.....	.....	.....	.....	.....	.....	.....	
Cincinnati, O.	9.15	1.50	7.50	3.75	3.00	5.25	6.00	6.75	10.50	13.50	3.84	.....	.....	3.00	2.40	4.20	4.80	.....	9.00	10.50	.....	.....	.....	.....	.....	.....	.....	.....	.....	
Cleveland, O.	7.47	1.05	5.25	3.00	2.40	4.20	4.80	10.13	15.75	21.00	4.43	.....	.....	3.00	2.40	4.20	4.80	.....	9.00	10.50	.....	.....	.....	.....	.....	.....	.....	.....	.....	
Columbus, O.	4.97	1.43	7.13	3.00	2.40	4.20	4.80	10.13	15.75	21.00	.....	.....	.....	.....	.....	.....	.....	.....	.....	.....	.....	.....	.....	.....	.....	.....	.....	.....	.....	
Dayton, O.	7.47	1.43	7.13	3.00	2.40	4.20	4.80	10.13	15.75	21.00	2.07	.....	.....	3.75	3.00	5.25	6.00	6.75	10.50	13.50	.....	.....	.....	.....	.....	.....	.....	.....	.....	
Detroit, Mich.	5.91	1.13	5.63	3.63	2.90	5.08	5.80	.....	10.50	13.50	7.35	1.50	7.50	3.38	2.70	4.73	5.40	.....	9.75	12.00	.....	.....	.....	.....	.....	.....	.....	.....	.....	
Erie, Pa.	3.51	.....	3.75	.....	.....	.....	.....	.....	.....	.....	.....	.....	.....	.....	.....	.....	.....	.....	.....	.....	.....	.....	.....	.....	.....	.....	.....	.....	.....	
Grand Rapids, Mich.	5.91	1.13	5.63	3.63	2.90	5.08	5.80	.....	10.50	13.50	7.35	1.50	7.50	3.38	2.70	4.73	5.40	.....	9.75	12.00	.....	.....	.....	.....	.....	.....	.....	.....	.....	
Indianapolis, Ind.	10.23	1.50	7.50	3.75	3.																									



\*Indicates air-conditioned cars.

## PARLOR, SLEEPING AND DINING CAR SERVICE

### North and West-Bound

Abbreviations: Sec.—Section; D.R.—Drawing Room; Comp.—Compartment

\*Indicates air-conditioned cars.

#### No. 1—Day Coach De Luxe—Daily

Parlor Cars  
New York to Buffalo  
New York to Montreal via D. & H. R.R.

Dining Cars  
New York to Buffalo—Diner Lounge  
Albany to Montreal via D. & H. R.R.—Diner Lounge

Observation Coach  
New York to Buffalo

Coaches  
New York to Buffalo  
New York to Montreal via D. & H. R.R.

#### No. 3—Cleveland Express—Daily

Sleeping Cars  
Buffalo to Chicago (12 Sec.-D.R.)—In No. 89 from Cleveland  
Buffalo to Cincinnati (12 Sec.-D.R.)—In Big Four No. 6  
Coaches

#### No. 5—The Mohawk—Daily

Via New York Central R.R.

Club Lounge  
New York to Buffalo (Buffet)  
Buffalo to St. Louis (Buffet)—In Big Four No. 39

Sleeping Cars  
New York to Chicago (14 Sec.)  
Buffalo to Chicago (12 Sec.-D.R.)  
Buffalo to Chicago (10 Sec.-D.R.-2 Comp.)  
Buffalo to St. Louis (12 Sec.-D.R.)—In Big Four No. 39  
—Open 9.00 p. m.  
Cleveland to Chicago (12 Sec.-D.R.)—Open 9.30 p. m.  
Cleveland to Indianapolis (14 Sec.)—Big Four No. 39  
—Open 9.30 p. m.

Parlor Cars  
New York to Buffalo

Dining Cars  
New York to Buffalo—Diner Lounge  
Toledo to Chicago

Coaches  
New York to Buffalo.  
Buffalo to Chicago  
Cleveland to St. Louis—Big Four No. 39

#### No. 7—Number Seven—Daily

Sleeping Cars  
New York to Cleveland (12 Sec.-D.R.)—From No. 47 at Buffalo  
Boston to Cincinnati (12 Sec.-D.R.)—In No. 11 to Buffalo; Big Four No. 119 from Cleveland  
Syracuse to Cleveland except Saturday night (12 Sec.-D.R.)—From No. 309 at Buffalo  
Buffalo to Cleveland except Saturday night (12 Sec.-D.R.)—Open 9.00 p. m.

Diner Lounge  
Buffalo to Cleveland

Coaches

#### No. 9—Fast Mail—Daily

Sleeping Cars—Open 9.30 p. m. (E.T.); may be occupied until 7.00 a. m. (C.T.)  
Cleveland to Chicago (10 Sec.-Lounge)  
Toledo to Chicago (12 Sec.-D.R.)

Parlor Car  
Buffalo to Pittsburgh—In P. & L.E. No. 34

Diner Lounge  
Buffalo to Youngstown

Coaches

New York to Buffalo  
Buffalo to Pittsburgh—In P. & L.E. No. 34  
Cleveland to Chicago

#### No. 11—Southwestern Limited—Daily

Via Big Four Route

Club Car  
New York to St. Louis  
Observation Sleeping Car  
New York to St. Louis (Drawing Room and Single Room)

Sleeping Cars  
New York to St. Louis (10 Sec.-3 Double Bedroom)  
New York to St. Louis (8 Sec.-D.R.-2 Comp.)  
New York to Cleveland (8 Sec.-D.R.-2 Comp.)  
Boston to St. Louis (8 Sec.-D.R.-2 Comp.)  
Boston to Cincinnati (12 Sec.-D.R.)—In No. 7 from Buffalo

Boston to Toronto (12 Sec.-D.R.)—In T.H. & B. No. 71  
Toronto to Cleveland (12 Sec.-D.R.)—From T.H. & B. No. 81; may be occupied until 8.00 a. m.

Observation Parlor Car on Boston & Albany R.R.

\*Dining Car serving all meals

Coach

\*New York to St. Louis

#### No. 15—Ohio State Limited—Daily

Via Big Four Route

Lounge Car  
New York to Cincinnati (8 Sec.-Buffet.)

Sleeping Cars  
New York to Cincinnati (8 Sec.-4 Double Bedroom)  
New York to Cincinnati (8 Sec.-D.R.-2 Comp.)  
New York to Columbus (12 Sec.-D.R.)—May be occupied until 8.00 a. m.  
New York to St. Louis (12 Sec.-D.R.)—In Big Four No. 39  
Boston to St. Louis (8 Sec.-D.R.-2 Comp.)—In Big Four No. 39  
Boston to Cincinnati (12 Sec.-D.R.)  
Buffalo to Cincinnati (14 Sec.)—Open 9.00 p. m.

Parlor Cars

New York to Buffalo  
New York to Albany.  
\*Dining Car serving all meals

Coaches  
New York to Cincinnati  
New York to Gallon  
Gallon to St. Louis

#### No. 17—The Wolverine—Daily

Via Michigan Central R.R.

Lounge Cars  
New York to Chicago (D.R.-2 Comp.-Buffet)  
Boston to Detroit (8 Sec.-Buffet)

Sleeping Cars  
New York to Chicago (8 Sec.-5 Double Bedroom)  
New York to Chicago (12 Sec.-D.R.)  
New York to Chicago (14 Sec.)  
New York to Bay City (12 Sec.-D.R.)  
New York to Grand Rapids (12 Sec.-D.R.)  
New York to Detroit (10 Sec.-3 Double Bedroom)  
Boston to Chicago (8 Sec.-D.R.-2 Comp.)  
Boston to Chicago (10 Sec.-D.R.-2 Comp.)  
Buffalo to Detroit (14 Sec.)—Open 9.00 p. m.

Parlor Cars  
New York to Glens Falls except Sunday  
New York to Albany Sunday only

\*Dining Car serving all meals

Coaches  
New York to Chicago  
Boston to Albany

#### No. 19—Lake Shore Limited—Daily

Via New York Central R.R.

Lounge Cars  
New York to Chicago (6 Double Bedroom—Buffet)  
New York to Cleveland (8 Sec.-Buffet)  
Buffalo to Toronto—Buffet—In T.H. & B. No. 71

Sleeping Cars  
New York to Chicago (8 Sec.-4 Double Bedroom)  
New York to Chicago (8 Sec.-D.R.-2 Comp.)  
New York to Cleveland (8 Sec.-D.R.-2 Comp.)  
New York to Cleveland (8 Sec.-5 Double Bedroom)  
New York to Cincinnati (14 Sec.)  
New York to Cincinnati (14 Sec.)

New York to Toronto (10 Sec.-D.R.)—In T.H. & B. No. 71  
New York to Toronto (14 Sec.)  
New York to Toronto (14 Single Bedroom)  
Boston to Chicago via B. & M. (12 Sec.-D.R.)—From No. 47 at Buffalo

Adirondack Division No. 5  
New York to Lake Placid (10 Sec.-D.R.-2 Comp.)  
New York to Malone (12 Sec.-D.R.)

Parlor Cars

Cleveland to Chicago  
Cleveland to Detroit—Restaurant Lounge—In Detroit Branch No. 224.

Dining Cars

New York to Albany  
New York to Chicago  
Buffalo to Toronto—In T.H. & B. No. 71  
Malone to Montreal—Diner Lounge—In Adk. Div. No. 5

Coach

\*New York to Chicago

#### No. 23—Number Twenty-three—Daily

Sleeping Cars  
New York to Cleveland (14 Sec.)—From No. 29 at Buffalo  
Boston to Chicago (10 Sec.-D.R.-2 Comp.)—In No. 29 to Buffalo; No. 151 from Cleveland

Dining Car

Buffalo to Cleveland—Diner Lounge

Coaches

Albany to Buffalo

Buffalo to Cleveland

#### No. 25—Twentieth Century Limited—Daily

Completely Air-Conditioned

Via New York Central R.R.

For special service charges see page 59

Club Car

New York to Chicago  
Observation Sleeping Car  
New York to Chicago (Drawing Room and Single Room)

Sleeping Cars

New York to Chicago (13 Double Bedroom)—Two  
New York to Chicago (6 Comp. 3 D.R.)—Two  
New York to Chicago (8 Sec.-5 Double Bedroom)  
New York to Chicago (14 Sec.)—Two  
New York to Chicago (8 Sec.-D.R.-2 Comp.)  
Boston to Chicago (8 Sec.-D.R.-2 Comp.)

Pullman Cars only; no coach passengers carried

Dining Cars

New York to Chicago

Boston to Albany

#### No. 29—The Niagara—Daily

New York to Niagara Falls—(Buffet)

Boston to Albany (Buffet)

Sleeping Cars  
New York to Cleveland (14 Sec.)—In No. 23 from Buffalo  
New York to Buffalo (12 Sec.-D.R.)—May be occupied until 8.00 a. m.

New York to Chicago via Niagara Falls (12 Sec.-D.R.)  
—In No. 248 from Niagara Falls; M.C. No. 39 from Buffalo

New York to Lockport (12 Sec.-D.R.)—In No. 139 from Rochester

New York to Ogdensburg via Carthage (12 Sec.-D.R.)  
—In St. L. Div. No. 59

New York to Massena via Carthage and Watertown (12 Sec.-D.R.)—In St. L. Div. No. 59

Boston to Chicago via N.Y.C. (10 Sec.-D.R.-2 Comp.)  
—From B. & A. No. 49; In No. 23 from Buffalo; No. 151 from Cleveland

Boston to Chicago via M.C. (12 Sec.-D.R.)—From B. & A. No. 49; In No. 15 from Buffalo

Boston to Buffalo (12 Sec.-D.R.)—May be occupied until 8.00 a. m.

Albany to Buffalo (12 Sec.-D.R.)—Open 9.30 p. m. May be occupied until 8.00 a. m.

Montreal to Buffalo (12 Sec.-D.R.)—From Adk. Div. No. 4. May be occupied until 8.00 a. m.

Lake Placid to Buffalo Sunday only (12 Sec.-D.R.)  
—From Adk. Div. No. 4. May be occupied until 8.00 a. m.

Dining Cars West of Buffalo

Coaches

#### No. 31—Number Thirty-one—Daily

New York to Plattsburg (12 Sec.-D.R.)

Coaches

#### No. 35—The Chicagoan—Daily

Via Michigan Central R.R.

Lounge Car  
New York to Chicago (8 Sec.-Buffet)—In No. 15 from Buffalo

Sleeping Cars—Open 9.45 p. m.  
New York to Chicago (8 Sec.-D.R.-2 Comp.)—In No. 15 from Buffalo

New York to Buffalo (12 Sec.-D.R.)  
Coaches west of Buffalo; no coach passengers carried east of Buffalo

Dining Car

\*Buffalo to Chicago—M. C. No. 15

#### No. 39—North Shore Limited—Daily

Via Michigan Central R.R.

Lounge Car

New York to Chicago (6 Double Bedroom—Buffet)

Sleeping Cars

New York to Chicago (8 Sec.-D.R.-2 Comp.)  
New York to Chicago (12 Sec.-D.R.)  
Albany to Chicago (12 Sec.-D.R.)  
New York to Chicago via Niagara Falls (12 Sec.-D.R.)  
—In N.Y.C. No. 29 to Niagara Falls; No. 248 to Buffalo

Boston to Chicago (10 Sec.-D.R.-2 Comp.)

Buffalo to Chicago (12 Sec.-D.R.)

Parlor Cars

New York to Buffalo

Boston to Buffalo

\*Dining Car Serving all meals

Coach

\*New York to Chicago

Boston to Albany

\*Indicates air-conditioned cars.

## PARLOR, SLEEPING AND DINING CAR SERVICE

### North and West-Bound

\*Indicates air-conditioned cars.

#### No. 43—South Shore Express—Daily

Sleeping Cars  
New York to Syracuse (12 Sec.-D.R.)—From No. 45 at Albany

Boston to Buffalo (14 Sec.)  
Cleveland to St. Louis (8 Sec.-D.R.-2 Comp.)—In Big Four No. 31

Parlor Cars

Albany to Detroit via Cleveland and Toledo—Broiler Buffet—In Detroit Branch No. 228

Utica to Malone—Sunday only—Broiler Buffet—In Adk. Div. No. 13

Buffalo to Detroit—In M.C.R.R. No. 45

Dining Car

Albany to Syracuse  
Cleveland to Toledo  
Buffalo to Detroit—Diner Lounge—In M. C.R.R. No. 45  
Cleveland to Gallon—In Big Four No. 31

Coaches

#### No. 45—Fort Orange—Daily

Sleeping Cars—Open 9.45 p. m.  
New York to Utica (12 Sec.-D.R.)  
New York to Syracuse (12 Sec.-D.R.)—In No. 43 from Albany

New York to Fort Edward via D. & H.R.R. except Saturday night (12 Sec.-D.R.)

New York to Albany (12 Sec.-D.R.)—Two—May be occupied until 8.00 a. m.

Parlor Car

Utica to Malone—Sunday only—Broiler Buffet—In Adk. Div. No. 13

Coaches

#### No. 47—The Detroit—Daily

Via Michigan Central R.R.

Lounge Cars

New York to Detroit (8 Single Bedroom)

New York to Buffalo—Buffet

Sleeping Cars

New York to Detroit (8 Sec.-4 Double Bedroom)  
New York to Detroit (8 Sec.-5 Single Bedroom)  
New York to Detroit (8 Sec.-D.R.-2 Comp.)—Two  
New York to Detroit (12 Sec.-D.R.)

New York to Cleveland (12 Sec.-D.R.)—In No. 7 from Buffalo

Boston to Chicago (12 Sec.-D.R.)—In B. & M. No. 59 to Albany; No. 19 from Buffalo

Pullman Cars only; no coach passengers carried

\*Dining Car serving all meals

#### No. 51—Empire State Express—Daily

Club Lounge

New York to Buffalo—Buffet

Parlor Cars

New York to Buffalo—Observation  
New York to Toronto—In T.H. & B. No. 83  
New York to Montreal via Rutland R.R.—Broiler Buffet  
New York to Watertown via Rome except Sunday

Utica to Malone except Sunday—Broiler Buffet—In Adk. Div. No. 3

Buffalo to Cleveland—In No. 91

Sleeping Car  
Buffalo to St. Louis (12 Sec.-D.R.)—In No. 91 from Buffalo; Big Four No. 27 from Cleveland

Dining Car

New York to Buffalo  
Buffalo to Toronto (Cafe Parlor)—In T. H. & B. No. 83  
Buffalo to Cleveland—In No. 91

Coaches

New York to Buffalo

New York to Montreal via Rutland R.R.

#### No. 59—The Iroquois—Daily

Lounge Car  
New York to Chicago (8 Sec.-Buffet)—In No. 151 from Buffalo

Sleeping Cars—Open 9.45 p. m.  
New York to Chicago (8 Sec.-D.R.-2 Comp.)—In No. 151 from Buffalo

New York to St. Louis (10 Sec.-D.R.-Comp.)—In No. 151 from Buffalo; Big Four No. 3 from Cleveland

New York to Buffalo (8 Sec.-5 Double Bedroom)  
New York to Buffalo (10 Sec.-3 Double Bedroom)  
New York to Buffalo (8 Sec.-D. R.-2 Comp.)

New York to Syracuse (12 Sec.-D.R.)—Two—May be occupied until 7.30 a. m.

New York to Rochester (12 Sec.-D.R.)—In Auburn Road No. 3

New York to Oswego except Saturday (12 Sec.-D.R.)—In St. L. Div. No. 337

Coaches

West of Buffalo; no coach passengers carried east of Buffalo

Dining Cars

Syracuse to Buffalo

Buffalo to Chicago

#### No. 63—The Genesee—Daily

Club Lounge  
New York to Toronto (Buffet)—In T.H. & B. No. 75

Sleeping Cars—Open 9.45 p. m.  
New York to Toronto (10 Sec.-D.R.-2 Comp.)—In T.H. & B. No. 75

New York to Niagara Falls (12 Sec.-D.R.)  
New York to Rochester (12 Sec.-D.R.)—Two—May be occupied until 8.00 a. m.

New York to Watertown via Rome (12 Sec.-D.R.)—In St. L. Div. No. 47-7 weekdays; No. 47-707 Sundays

Boston to Buffalo (12 Sec.-D.R.)—From B. & A. No. 37

Syracuse to Toronto—In T.H. & B. No. 75

Coaches

#### No. 65—Montreal Limited—Daily

Via Delaware & Hudson

Club Lounge

New York to Troy (Buffet)

Whitehall to Montreal (Buffet)

Sleeping Cars

New York to Montreal (13 Double Bedroom)  
New York to Montreal (14 Single Bedroom)  
New York to Montreal (12 Sec.-D.R.)—Three

New York to Montreal (10 Sec.-D.R.-2 Comp.)—Two  
Pullman Cars only; no coach passengers carried

Dining Car

Rouses Point to Montreal—Diner Lounge

#### No. 67—The Commodore Vanderbilt—Daily

Via New York Central R.R.

Lounge Car

New York to Chicago—(6 Double Bedroom—Buffet)

Sleeping Cars

New York to Chicago (10 Sec.-3 Double Bedroom)—Two  
New York to Chicago (8 Sec.-D.R.-2 Comp.)  
New York to Chicago (10 Sec.-2 D.R.)

New York to Toledo (14 Sec.)  
Boston to Chicago (10 Sec.-2 D.R.)—From No. 25 at Albany

Buffalo to Chicago (12 Sec.-D.R.)—Open 9.00 p. m.

Parlor Car  
New York to Syracuse  
New York to Syracuse—In No. 467 from Albany

Dining Car  
New York to Buffalo  
New York to Syracuse—Diner Lounge—In No. 467 from Albany

Toledo to Chicago

Coaches

New York to Chicago

New York to Syracuse—In No. 467 from Albany

#### No. 71—Mount Royal—Daily

Via Rutland Route

Lounge Car

New York to Montreal (D.R.-2 Comp.-Buffet)

Sleeping Cars

New York to Montreal (10 Sec.-3 Double Bedroom)  
New York to Burlington (12 Sec.-D.R.)—In No. 43 from Rutland. May be occupied until 8.00 a. m.

New York to Rutland (12 Sec.-D.R.)—May be occupied until 8.00 a. m.

Coach

New York to Montreal

Dining service

Rouses Point to Montreal—Buffet Lounge Car

#### No. 79—Buffalo-Pittsburgh Express—Daily

Via Pittsburgh & Lake Erie No. 38

Lounge Car

Boston to Pittsburgh (12 Sec.-D.R.)—From No. 67 at Buffalo

Massena to Pittsburgh (12 Sec.-D.R.)—From No. 309 at Buffalo

Toronto to Pittsburgh (12 Sec.-D.R.)—From T.H. & B. No. 82

Buffalo to Pittsburgh (12 Sec.-D.R.)—Open 9.00 p. m.

Diner Lounge

Youngstown to Pittsburgh

Coach

Buffalo to Pittsburgh

## &lt;



\*Indicates air-conditioned cars.

## PARLOR, SLEEPING AND DINING CAR SERVICE East and South-Bound

\*Indicates air-conditioned cars.

### No. 2—Day Coach De Luxe—Daily

Parlor Car  
Syracuse to New York  
Observation Coach  
Syracuse to New York  
Diner Lounge  
Albany to New York  
Coach  
Syracuse to New York

### No. 4—New York Special—Daily

Lounge Cars  
Chicago to New York (8 Sec.-Buffet)  
Niagara Falls to Buffalo—Buffet  
Sleeping Cars  
Chicago to New York (12 Sec.-D.R.)  
Chicago to Boston (12 Sec.-D.R.)—In B. & A. No. 46  
Chicago to New York (8 Sec.-D.R.-2 Comp.)  
Indianapolis to New York (14 Sec.)—From Big Four  
No. 4  
Cincinnati to New York (14 Sec.)—From Big Four  
No. 104  
Cleveland to Boston (12 Sec.-D.R.)—In B. & A. No. 46  
Grand Rapids to New York (12 Sec.-D.R.)—From M.C.  
Bay City to New York (12 Sec.-D.R.)—No. 44  
Buffalo to New York (8 Sec.-5 Double Bedroom)—  
Open at 9.00 p.m.  
Niagara Falls to New York (8 Sec.-D.R.-2 Comp.)  
Lockport to New York (12 Sec.-D.R.)—From No. 49  
at Buffalo  
Adirondack Division No. 4  
Malone to New York (12 Sec.-D.R.)  
Lake Placid to New York (10 Sec.-D.R.-2 Comp.)  
Parlor Cars  
Chicago to Buffalo—From No. 44 at Cleveland  
Chicago to Cleveland (Sleeper as Parlor Car)  
Detroit to Pittsburgh—Broiler Buffet—From Detroit  
Branch No. 306  
Dining Cars  
Chicago to Buffalo  
Cleveland to Pittsburgh—Diner Lounge  
Cincinnati to Cleveland—In Big Four No. 104  
Indianapolis to Bellefontaine—In Big Four No. 4  
Chicago to Buffalo—In M.C. No. 44  
Pittsburgh to Boston—In B. & A. No. 46  
Montreal to Malone—Diner Lounge—In Adk. Div. No. 4  
Coaches  
Chicago to Buffalo  
Chicago to New York—From M.C. No. 44 at Buffalo  
Detroit to Pittsburgh—From Detroit Branch No. 306

### No. X4—Fast Mail—Daily

Lounge Cars  
Buffalo to Albany—Buffet  
Sleeping Cars  
Toronto to Boston (12 Sec.-D.R.)—From T. H. & B.  
No. 80  
Detroit to Boston (10 Sec.-D.R.-2 Comp.)—In M.C.  
No. 44 at Buffalo; B. & A. No. 46  
Buffalo to Boston (12 Sec.-D.R.)—In B. & A. No. 46—  
Open 9.00 p.m.  
Parlor Car  
Chicago to Buffalo—In No. 4 from Cleveland  
Coach  
Chicago to Cleveland; no coach passengers carried  
east of Cleveland  
Dining Cars  
Chicago to Toledo  
Pittsburgh to Boston—In B. & A. No. 46

### No. 6—Fifth Avenue Special—Daily

Via New York Central R.R.

Lounge Cars  
Chicago to New York (6 Double Bedroom—Buffet)  
Toronto to Syracuse (Buffet)—In T.H. & B. No. 82  
Sleeping Cars  
Chicago to New York (8 Sec.-4 Double Bedroom)  
Chicago to New York (8 Sec.-D.R.-2 Comp.)—Two  
Chicago to New York (10 Sec.-2 D.R.)  
Toledo to New York (14 Sec.)  
Cleveland to New York (12 Sec.-D.R.)  
Cleveland to New York (8 Sec.-5 Double Bedroom)  
Toronto to New York (14 Single Bedroom)—From  
Toronto to New York (14 Sec.)—T.H. & B.  
Toronto to New York (10 Sec.-D.R.-2 Comp.)—No. 82  
Buffalo to Massena via Utica, Carthage and Watertown  
(12 Sec.-D.R.)—In St. L. Div. No. 59—Open 9.00 p.m.  
Parlor Car  
Chicago to Cleveland  
Dining Car serving all meals  
Coach  
Chicago to New York

### No. 8—The Wolverine—Daily Via Michigan Central R.R.

Lounge Cars  
Chicago to New York (6 Double Bedroom—Buffet)  
Chicago to Boston (8 Sec.-Buffet)  
Sleeping Cars  
Chicago to New York (12 Sec.-D.R.)  
Chicago to New York (8 Sec.-D.R.-2 Comp.)  
Chicago to Boston (8 Sec.-D.R.-2 Comp.)  
Buffalo to Albany (12 Sec.-D.R.)—Open 9.00 p.m.  
Buffalo to New York (12 Sec.-D.R.)—Open 9.00 p.m.  
Coach  
Dining Car serving all meals  
Chicago to New York

### No. 12—Southwestern Limited—Daily

Via Big Four Route

Club Car  
St. Louis to New York  
Observation Sleeping Car  
St. Louis to New York (Drawing Room and Single Room)  
Sleeping Cars  
St. Louis to New York (10 Sec.-3 Double Bedroom)  
St. Louis to New York (8 Sec.-D.R.-2 Comp.)  
St. Louis to Boston (8 Sec.-D.R.-2 Comp.)—In B. & A.  
No. 26  
Cleveland to New York (14 Sec.)  
Pittsburgh to Boston (12 Sec.-D.R.)—From No. 84 at  
Buffalo  
Niagara Falls to New York (12 Sec.-D.R.)  
Dining Car serving all meals  
Coach  
St. Louis to Buffalo; no coach passengers carried east  
of Buffalo

### No. 16—Ohio State Limited—Daily

Via Big Four Route

Club Car  
Cleveland to New York  
Lounge Cars  
Cincinnati to New York (8 Sec.-Buffet)  
Cleveland to New York (Drawing Room and Single Room)  
Sleeping Cars  
Cincinnati to New York (8 Sec.-4 Double Bedroom)  
Cincinnati to New York (8 Sec.-D.R.-2 Comp.)  
Cincinnati to Boston (12 Sec.-D.R.)—In B. & A. No. 26  
Dining Cars  
Cincinnati to Cleveland  
Albany to New York  
Albany to Boston  
Coaches  
Cincinnati to Cleveland  
Cleveland to Buffalo; no coach passengers carried east  
of Buffalo

### No. 18—Number Eighteen—Daily

Sleeping Cars  
Chicago to Buffalo (12 Sec.-D.R.)  
Chicago to Buffalo (10 Sec.-D.R.-2 Comp.)  
Cleveland to Buffalo (12 Sec.-D.R.)—Open 9.30 p.m.—  
May be occupied until 8.00 a.m.  
Cincinnati to Buffalo (14 Sec.)—From Big Four No. 18  
May be occupied until 8.00 a.m.  
St. Louis to Buffalo (10 Sec.-D.R.)—From Big Four  
No. 24—May be occupied until 8.00 a.m.  
Pittsburgh to Toronto (12 Sec.-D.R.)—From P. & L.E.  
No. 7; In T.H. & B. No. 75  
Pittsburgh to Buffalo (12 Sec.-D.R.)—From P. & L.E.  
No. 7—May be occupied until 8.00 a.m.  
Coaches  
Cleveland to Buffalo  
Pittsburgh to Buffalo

### No. 22—Lake Shore Limited—Daily

Via New York Central R.R.

Lounge Car  
Chicago to New York (8 Sec.-Buffet)  
Sleeping Cars  
Chicago to New York (8 Sec.-D.R.-2 Comp.)  
Chicago to New York (10 Sec.-3 Double Bedroom)  
Chicago to Boston via B. & A. R.R. (10 Sec.-2 D.R.)  
Chicago to Boston via Troy (12 Sec.-D.R.)—B. & M.  
No. 68  
Chicago to Buffalo (12 Sec.-D.R.)  
In No. 18 from Cleveland  
Chicago to Buffalo (10 Sec.-D.R.)—May be occupied  
until 8.00 a.m.  
Cincinnati to New York (12 Sec.-D.R.)—From No. 18  
at Cleveland  
Parlor Cars  
Buffalo to Boston—In B. & A. No. 22  
Troy to New York  
Dining Cars  
Chicago to Toledo  
Buffalo to New York  
Albany to Boston  
Coaches  
Chicago to New York  
Troy to New York  
Albany to Boston

### No. 24—The Knickerbocker—Daily

Club Lounge  
St. Louis to Cleveland (Buffet)  
Buffalo to New York (Buffet)  
Sleeping Cars  
St. Louis to New York (10 Sec.-D.R.-Comp.)  
Cincinnati to New York (12 Sec.-D.R.)  
St. Louis to Boston (8 Sec.-D.R.-2 Comp.)—In No. 468  
from Utica; B. & A. No. 10  
Chicago to Boston (10 Sec.-D.R.-2 Comp.)—From No.  
68 at Cleveland; In No. 468 from Utica  
Cleveland to New York (12 Sec.-D.R.)—Open 9.30 p.m.  
Cincinnati to Albany (12 Sec.-D.R.)—In No. 468 from  
Utica—Open 9.00 p.m.  
Detroit to New York (12 Sec.-D.R.)—From M.C. No. 10  
at Buffalo  
Dining Cars  
St. Louis to Cleveland  
Cincinnati to Columbus  
Buffalo to New York—Diner Lounge  
Coaches  
St. Louis to New York  
Cincinnati to Cleveland

### No. 26—Twentieth Century Limited—Daily

Completely Air-Conditioned

Via New York Central R.R.

For special service charges see page 59

Club Car  
Chicago to New York  
Observation Sleeping Car  
Chicago to New York (Drawing Room and Single Room)  
Sleeping Cars  
Chicago to New York (13 Double Bedroom)—Two  
Chicago to New York (8 Sec.-5 Double Bedroom)  
Chicago to New York (6 Comp.-3 D.R.)—Two  
Chicago to New York (14 Sec.)—Two  
Chicago to New York (8 Sec.-D.R.-2 Comp.)  
Chicago to Boston (8 Sec.-D.R.-2 Comp.)  
Pullman Cars only; no coach passengers carried  
Dining Cars  
Chicago to New York  
Albany to Boston

### No. 30—The Iroquois—Daily

Club Lounge  
Toronto to New York—Buffet—From T. H. & B. No. 80  
Sleeping Cars  
Toronto to New York (10 Sec.-D.R.-2 Comp.)—  
From T. H. & B. No. 80  
Buffalo to New York (10 Sec.-3 Double Bedroom)  
Buffalo to Montreal (12 Sec.-D.R.)—In Adk. Div. No. 6  
Rochester to New York (12 Sec.-D.R.)—Three  
Rochester to Boston (12 Sec.-D.R.)—In  
B. & A. No. 46  
Rochester to Albany except Sat. (12 Sec.-  
D.R.)—May be occupied until 8.00 a.m.  
Pullman Cars only; no coach passengers carried  
Dining Cars  
Toronto to Buffalo—Diner Lounge  
Malone to Montreal—Diner Lounge—In Adk. Div. No. 6

### No. 32—Mail—Daily

Sleeping Cars  
Syracuse to New York except Saturday (12 Sec.-D.R.)—  
From No. 424 at Albany—May be occupied until  
7.30 a.m.  
Albany to New York (12 Sec.-D.R.)—Open 9.30 p.m.  
May be occupied until 7.30 a.m.  
Coaches

### No. 36—The Genesee—Daily

Sleeping Cars  
Buffalo to New York except Saturday (12 Sec.-D.R.)—  
Buffalo to New York (12 Sec.-D.R.)—In Auburn  
Rochester to New York (12 Sec.-D.R.)—In Auburn  
Road No. 18  
Oswego to New York except Saturday (12 Sec.-D.R.)—  
From St. L. Div. No. 336  
Syracuse to New York (12 Sec.-D.R.)—Open 10.00 p.m.  
Utica to New York (12 Sec.-D.R.)—Open 9.30 p.m.  
From St. Lawrence Division No. 80  
Watertown to New York via Carthage (12 Sec.-D.R.)  
Massena to New York via Carthage (12 Sec.-D.R.)  
Ogdensburg to New York via Carthage (12 Sec.-D.R.)  
Coaches

\*Indicates air-conditioned cars.

## PARLOR, SLEEPING AND DINING CAR SERVICE East and South-Bound

\*Indicates air-conditioned cars.

### No. 40—North Shore Limited—Daily

Lounge Cars  
Chicago to New York via M.C.R.R. (D.R.-2 Comp.-  
Buffet)  
St. Louis to Indianapolis—Buffet  
Cleveland to Buffalo—Buffet  
Sleeping Cars  
Chicago to New York via M.C.R.R. (8 Sec.-5 Double  
Bedroom)  
Chicago to New York via M.C.R.R. (14 Sec.)  
Chicago to Boston via M.C.R.R. (10 Sec.-D.R.-2  
Comp.)  
Chicago to Buffalo (10 Sec.-Lounge)—From No. 80 at  
Cleveland  
St. Louis to New York via Big Four (8 Sec.-D.R.-2  
Comp.)  
St. Louis to New York via Big Four (12 Sec.-D.R.)  
St. Louis to Cleveland via Big Four (10 Sec.-Lounge)—  
May be occupied until 8.00 a.m.  
Dining Car serving all meals  
Parlor Car  
Buffalo to New York (sleeper as parlor car)  
Coaches  
Chicago to New York  
St. Louis to Buffalo via Big Four  
Albany to Boston

### No. 42—Boston Express—Daily

Sleeping Cars—In B. & A. No. 42  
Buffalo to Boston (14 Sec.)  
Syracuse to Boston except Saturday (12 Sec.-D.R.)  
Buffalo to Springfield except Saturday (12 Sec.-D.R.)  
Parlor Car  
Buffalo to Albany—(Sleeper as Parlor Car)  
Diner Lounge  
Buffalo to Albany  
Coaches

### No. 44—Number Forty-four—Daily

Parlor Car  
Cleveland to Buffalo—Broiler Buffet  
Coaches

### No. 48—The Detroit—Daily

Via Michigan Central R.R.

Lounge Cars  
Detroit to New York (8 Single Bedroom)  
Detroit to New York (8 Sec.-Buffet)  
Sleeping Cars  
Detroit to New York (8 Sec.-4 Double Bedroom)  
Detroit to New York (8 Sec.-5 Single Bedroom)  
Detroit to New York (8 Sec.-D.R.-2 Comp.)—Two  
Detroit to New York (12 Sec.-D.R.)  
Pullman Cars only; no coach passengers carried  
Dining Car serving all meals

### No. 50—Empire State Express—Daily Except Sunday

Club Lounge  
Buffalo to New York—Buffet  
Parlor Cars  
Buffalo to New York—Observation  
Buffalo to New York—Two  
Malone to New York—Broiler Buffet—In Adk. Div.  
No. 2  
Dining Car  
Buffalo to New York  
Coaches

### No. 52—Buffalo Express—Daily

Parlor Car  
Detroit to Buffalo—Broiler Buffet—From Detroit Branch  
No. 301  
Coaches

### No. 56—The DeWitt Clinton—Daily

Sleeping Cars—Open 9.30 p.m. (C.T.)  
Chicago to Cleveland (12 Sec.-D.R.)  
Chicago to Toledo (12 Sec.-D.R.)—May be occupied  
until 8.00 a.m. (E.T.)  
Parlor Cars  
Cleveland to Albany—Broiler Buffet  
Detroit to New York via M.C.R.R.  
Pittsburgh to Buffalo—Broiler Buffet—From P. & L. E.  
No. 8  
Dining Cars  
Toledo to Cleveland  
Detroit to Buffalo—Diner Lounge  
Syracuse to Albany  
Coaches  
Chicago to Buffalo  
Buffalo to New York  
Pittsburgh to Buffalo—From P. & L. E. No. 8

### No. 58—The Niagara—Daily

Lounge Car  
St. Thomas to New York—Buffet  
Sleeping Cars  
Chicago to New York (12 Sec.-D.R.)  
Detroit to New York (12 Sec.-D.R.)—Open 10 p.m.  
Detroit to Buffalo (14 Sec.)  
Parlor Cars  
Buffalo to New York  
Watertown to New York via Rome except Sunday—  
From St. L. Div. No. 10-44  
Dining Cars  
Chicago to Kalamazoo  
St. Thomas to New York—Diner Lounge  
Coaches  
Chicago to Buffalo  
Buffalo to New York

### No. 60—Cleveland and Buffalo Special—Daily

Sleeping Cars  
Chicago to Buffalo (12 Sec.-D.R.)—From No. 90 at  
Cleveland  
Cincinnati to Cleveland (12 Sec.-D.R.)—Big Four  
No. 42—May be occupied until 8.00 a.m.  
Diner Lounge  
Cleveland to Buffalo  
Coaches

### No. 62—Montreal Limited—Daily

Via Delaware & Hudson

Club Lounge  
Montreal to Whitehall—Buffet  
Troy to New York—Buffet  
Sleeping Cars—D. & H. No. 10  
Montreal to New York (13 Double Bedroom)  
Montreal to New York (14 Single Bedroom)  
Montreal to New York (12 Sec.-D.R.)—Three  
Montreal to New York (10 Sec.-D.R.-2 Comp.)—Two  
Pullman Cars only; no coach passengers carried  
Dining service Troy to New York—Diner Lounge

### No. 68—The Commodore Vanderbilt—Daily

Lounge Car  
Chicago to New York (6 Double Bedroom—Buffet)  
Sleeping Cars  
Chicago to New York (14 Sec.)  
Chicago to New York (8 Sec.-D.R.-2 Comp.)  
Chicago to Boston (10 Sec.-D.R.-2 Comp.)—In No. 24  
from Cleveland; No. 468 from Utica; B. & A. No. 10  
from Albany  
Cleveland to Rochester, except Saturday night (12 Sec.-  
D.R.)—Open 9.30 p.m.—May be occupied until  
8.00 a.m.  
Cleveland to Toronto (12 Sec.-D.R.)—In T.H. & B.  
No. 71—Open 9.30 p.m.  
Pittsburgh to Albany (12 Sec.-D.R.)—From No. 84 at  
Buffalo  
Detroit to Albany (14 Sec.)—From M. C. No. 10 at  
Buffalo  
Parlor Cars  
Chicago to Cleveland  
Utica to New York—From No. 468 at Albany  
Dining Car serving all meals  
Coaches  
Chicago to New York  
Utica to New York—From No. 468 at Albany  
Albany to Boston

### No. 72—Mount Royal—Daily

Via Rutland Route

Lounge Car  
Montreal to New York (D.R.-2 Comp.-Buffet)  
Sleeping Cars  
Montreal to New York (10 Sec.-3 Double Bedroom)  
Burlington to New York (12 Sec.-D.R.)—In No. 46 to  
Rutland  
Pittsburgh to New York (12 Sec.-D.R.)—D. & H. No. 8  
Fort Edward to New York, except Saturday  
(12 Sec.-D. R.) D. & H. No. 8  
Coach  
Montreal to New York  
Dining service Troy to New York—Buffet Lounge Car

### No. 80—The Maumee—Daily

Lounge Car  
Chicago to Buffalo (10 Sec.)—In No. 40 from Cleveland  
Sleeping Cars  
Chicago to Columbus (12 Sec.-D.R.)—In Ohio Central  
No. 2 from Toledo  
Chicago to Pittsburgh (12 Sec.-D.R.)—In No. 88 from  
Toledo; P. & L. E. No. 88  
Detroit to Cleveland (12 Sec.-D.R.)—Two—From  
Detroit Branch No. 227—May be occupied until  
8.00 a.m.  
Coaches  
Chicago to Cleveland  
Chicago to Pittsburgh—In No. 88 from Toledo; P. & L.  
E. No. 88  
Detroit to Cleveland—From Detroit Branch No. 227

### No. 84—Empire Express—Daily

Sleeping Cars  
Pittsburgh to Boston (12 Sec.-D.R.)—In P. & L. E. No.  
33 to Youngstown; No. 12 from Buffalo; B. & A. No. 26  
Pittsburgh to Albany (12 Sec.-D.R.)—In P. & L. E. No.  
33 to Youngstown; No. 68 from Buffalo

Parlor Car  
Pittsburgh to Buffalo  
Diner Lounge  
Pittsburgh to Buffalo  
Coach  
Pittsburgh to Buffalo

### No. 88—Pittsburgh Special—Daily

Sleeping Cars  
Detroit to Pittsburgh (12 Sec.-D.R.)—From Detroit  
Branch No. 307—Open 10 p.m.  
Chicago to Pittsburgh (12 Sec.-D.R.)—From No. 80  
at Toledo  
Coaches  
Detroit to Pittsburgh—From Detroit Branch No. 307  
Detroit to Pittsburgh—From No. 80 at Toledo

### No. 90—The Forest City—Daily

Club Lounge  
Chicago to Cleveland—Buffet  
Cleveland to New York—Buffet  
Sleeping Cars—Open 9.30 p.m. (C.T.). May be occupied at  
Cleveland until 8.00 a.m. (E.T.)  
Chicago to New York (12 Sec.-D.R.)  
Chicago to Buffalo (12 Sec.-D.R.)—In No. 60 from  
Cleveland  
Chicago to Cleveland (14 Single Bedroom)  
Chicago to Cleveland (14 Sec.)—Two  
Chicago to Cleveland (12 Sec.-D.R.)  
Chicago to Cleveland (8 Sec.-D.R.-2 Comp.)  
Parlor Cars  
Cleveland to New York  
Toronto to New York—From T.H. & B. No. 72  
Dining Car  
Cleveland to New York—Diner Lounge  
Coach  
Chicago to New York

### No. 96—New York Express—Sunday Only

Club Lounge  
Buffalo to New York—Buffet  
Parlor Cars  
Buffalo to New York—Observation  
Buffalo to New York—Two  
Malone to New York—Broiler Buffet—In Adk. Div.  
No. 14  
Dining Car  
Buffalo to New York  
Coaches

### No. 144—The Laurentian-Green Mountain Flyer—Daily

Parlor Cars  
Montreal to New York via D. & H. R.R.  
Montreal to New York via Rutland R.R.—Broiler  
Buffet  
Dining Car  
Montreal to Troy via D. & H. R.R.—Diner Lounge  
Troy to New York  
Coaches  
Montreal to New York via D. & H. R.R.  
Montreal to New York via Rutland R.R.

### No. 168—Albany and Troy Express—Daily

Parlor Car  
Troy to New York via Albany except Sunday (sleeper as  
parlor car)  
Coaches

### No. 252—Tri City Special—Daily

From Detroit Branch No. 225

Parlor Cars  
Detroit to Cleveland  
Detroit to Cleveland—Restaurant Lounge  
Coaches

### No. 424—Local—Daily

Sleeping Car  
Syracuse to New York except Saturday (12 Sec.-D.R.)—  
In No. 32 from Albany  
Coaches

### No. 468—Number Four Sixty-eight—Daily

Sleeping Cars  
Chicago to Boston (10 Sec.-D.R.-2 Comp.)—In No. 68  
to Cleveland; No. 24 to Utica  
St. Louis to Boston (8 Sec.-D.R.-2 Comp.)—From  
No. 24 at Utica  
Cleveland to Albany (12 Sec.-D.R.)—From No. 24 at  
Utica  
Parlor Car  
Utica to New York—In No. 68 from Albany  
Diner Lounge  
Utica to New York—In No. 68 from Albany  
Coach  
Utica to New York—In No. 68 from Albany



Table No. 1 Condensed Table—New York and Boston to Buffalo, Cleveland, Toledo, Detroit and Chicago

The time given is Eastern Standard Time Toledo, Detroit and East and Central Standard Time at stations west thereof.

WEST-BOUND															EAST-BOUND												
	Empire State Express	Buffalo-Cleveland-Special	Day Coach De Luxe	Cleveland Express	The Mohawk	North Shore Limited	Ohio State Limited	20th Century Limited	The Commodore Vanderbilt	The Wolverine	South-western Limited	The Detroit	Number Twenty-Three	Lake Shore Limited	The Niagara	The Chicagoan	Interstate Express	The Iroquois	The Genesee	South Shore Express							
	51 Daily	91 Daily	1 Daily	3 Daily	5 Daily	39 Daily	15 Daily	25 Daily	67 Daily	309-7 Daily	17 Daily	11 Daily	47 Daily	47-7 Daily	23 Daily	19 Daily	29 Daily	35 Daily	151 Daily	59 Daily	63 Daily	81-609 Daily	45-43 Daily				
N. Y. Central																											
Ly New York (G. C. Term.)	AM 8 30	PM 9 00	AM 9 00	PM 11 15	PM 1 15	PM 3 00	AM 4 15	PM 4 20	PM 5 45	PM 6 20	PM 6 30	PM 6 30	PM 6 30	PM 6 30	PM 6 30	PM 7 45	PM 9 15	PM 10 40	AM 11 40	PM 11 40	PM 11 50	AM 12 05	AM 12 05				
" New York (125th St.)	AM 8 40	PM 9 11	AM 9 28	PM 11 25	PM 1 25	PM 3 10	AM 4 25	PM 4 30	PM 5 55	PM 6 40	PM 6 50	PM 6 50	PM 6 50	PM 6 50	PM 6 50	PM 7 55	PM 9 25	PM 10 50	AM 11 50	PM 12 00	PM 12 00	AM 12 15	AM 12 15				
" Yonkers	AM 8 50	PM 9 21	AM 9 38	PM 11 35	PM 1 35	PM 3 20	AM 4 35	PM 4 40	PM 6 05	PM 6 50	PM 7 00	PM 7 00	PM 7 00	PM 7 00	PM 7 00	PM 8 05	PM 9 35	PM 11 00	AM 12 00	PM 12 10	PM 12 10	AM 12 25	AM 12 25				
" Harmon	AM 9 23	PM 9 54	AM 10 11	PM 12 08	PM 2 06	PM 3 48	AM 4 52	PM 4 57	PM 6 25	PM 7 10	PM 7 20	PM 7 20	PM 7 20	PM 7 20	PM 7 20	PM 8 25	PM 9 55	PM 11 20	AM 12 20	PM 12 30	PM 12 30	AM 12 45	AM 12 45				
" Poughkeepsie	AM 9 33	PM 10 04	AM 10 21	PM 12 18	PM 2 16	PM 4 00	AM 5 04	PM 5 09	PM 6 35	PM 7 20	PM 7 30	PM 7 30	PM 7 30	PM 7 30	PM 7 30	PM 8 35	PM 10 05	PM 11 30	AM 12 30	PM 12 40	PM 12 40	AM 12 55	AM 12 55				
B. & A. R. R.																											
Ly Boston (South Station)	AM 4 05	PM 4 36	AM 4 53	PM 5 24	PM 5 55	PM 6 26	AM 6 57	PM 7 28	PM 8 03	PM 8 34	PM 8 44	PM 8 44	PM 8 44	PM 8 44	PM 8 44	PM 9 15	PM 9 46	PM 10 17	AM 10 48	PM 11 19	PM 11 50	AM 12 21	AM 12 21				
" Worcester	AM 4 15	PM 4 46	AM 5 03	PM 5 34	PM 6 05	PM 6 36	AM 7 07	PM 7 38	PM 8 13	PM 8 44	PM 8 54	PM 8 54	PM 8 54	PM 8 54	PM 8 54	PM 9 25	PM 9 56	PM 10 27	AM 10 58	PM 11 29	PM 12 00	AM 12 31	AM 12 31				
" Springfield	AM 4 25	PM 4 56	AM 5 13	PM 5 44	PM 6 15	PM 6 46	AM 7 17	PM 7 48	PM 8 23	PM 8 54	PM 9 04	PM 9 04	PM 9 04	PM 9 04	PM 9 04	PM 9 35	PM 10 06	PM 10 37	AM 11 08	PM 11 39	PM 12 10	AM 12 41	AM 12 41				
" Pittsfield	AM 4 35	PM 5 06	AM 5 23	PM 5 54	PM 6 25	PM 6 56	AM 7 27	PM 7 58	PM 8 33	PM 9 04	PM 9 14	PM 9 14	PM 9 14	PM 9 14	PM 9 14	PM 9 45	PM 10 16	PM 10 47	AM 11 18	PM 11 49	PM 12 20	AM 12 51	AM 12 51				
" Chatham	AM 4 45	PM 5 16	AM 5 33	PM 6 04	PM 6 35	PM 7 06	AM 7 37	PM 8 08	PM 8 43	PM 9 14	PM 9 24	PM 9 24	PM 9 24	PM 9 24	PM 9 24	PM 9 55	PM 10 26	PM 10 57	AM 11 28	PM 11 59	PM 12 30	AM 13 01	AM 13 01				
Ar Albany	AM 11 17	PM 11 48	AM 12 05	PM 12 36	PM 1 07	PM 1 38	AM 2 09	PM 2 40	PM 3 15	PM 3 46	PM 3 56	PM 3 56	PM 3 56	PM 3 56	PM 3 56	PM 4 27	PM 4 58	PM 5 29	AM 6 00	PM 6 31	PM 7 02	AM 7 33	AM 7 33				
N. Y. Central																											
Ly Albany	AM 11 25	PM 11 56	AM 12 13	PM 12 44	PM 1 15	PM 1 46	AM 2 17	PM 2 48	PM 3 23	PM 3 54	PM 4 04	PM 4 04	PM 4 04	PM 4 04	PM 4 04	PM 4 35	PM 5 06	PM 5 37	AM 6 08	PM 6 39	PM 7 10	AM 7 41	AM 7 41				
" Schenectady	AM 11 35	PM 12 06	AM 12 23	PM 12 54	PM 1 25	PM 1 56	AM 2 27	PM 2 58	PM 3 33	PM 4 04	PM 4 14	PM 4 14	PM 4 14	PM 4 14	PM 4 14	PM 4 45	PM 5 16	PM 5 47	AM 6 18	PM 6 49	PM 7 20	AM 7 51	AM 7 51				
" Utica	AM 11 45	PM 12 16	AM 12 33	PM 13 04	PM 1 35	PM 2 06	AM 2 37	PM 3 08	PM 3 43	PM 4 14	PM 4 24	PM 4 24	PM 4 24	PM 4 24	PM 4 24	PM 4 55	PM 5 26	PM 5 57	AM 6 28	PM 6 59	PM 7 30	AM 8 01	AM 8 01				
" Syracuse	AM 11 55	PM 12 26	AM 12 43	PM 13 14	PM 1 45	PM 2 16	AM 2 47	PM 3 18	PM 3 53	PM 4 24	PM 4 34	PM 4 34	PM 4 34	PM 4 34	PM 4 34	PM 5 05	PM 5 36	PM 6 07	AM 6 38	PM 7 09	PM 7 40	AM 8 11	AM 8 11				
" Rochester	AM 12 05	PM 12 36	AM 12 53	PM 13 24	PM 1 55	PM 2 26	AM 2 57	PM 3 28	PM 4 03	PM 4 34	PM 4 44	PM 4 44	PM 4 44	PM 4 44	PM 4 44	PM 5 15	PM 5 46	PM 6 17	AM 6 48	PM 7 19	PM 7 50	AM 8 21	AM 8 21				
Ar Buffalo (Cent. Term.)	AM 5 00	PM 5 31	AM 5 48	PM 6 19	PM 6 50	PM 7 21	AM 7 52	PM 8 23	PM 8 58	PM 9 29	PM 9 39	PM 9 39	PM 9 39	PM 9 39	PM 9 39	PM 10 10	PM 10 41	PM 11 12	AM 11 43	PM 12 14	PM 12 25	AM 12 46	AM 12 46				
N. Y. Central																											
Ly Buffalo (Cent. Term.)	AM 5 16	PM 5 47	AM 6 04	PM 6 35	PM 7 06	PM 7 37	AM 8 08	PM 8 39	PM 9 14	PM 9 45	PM 9 55	PM 9 55	PM 9 55	PM 9 55	PM 9 55	PM 10 26	PM 10 57	PM 11 28	AM 11 59	PM 12 30	PM 12 41	AM 13 02	AM 13 02				
Ly Dunkirk	AM 5 26	PM 5 57	AM 6 14	PM 6 45	PM 7 16	PM 7 47	AM 8 18	PM 8 49	PM 9 24	PM 9 55	PM 10 05	PM 10 05	PM 10 05	PM 10 05	PM 10 05	PM 10 36	PM 11 07	PM 11 38	AM 12 09	PM 12 40	PM 12 51	AM 13 12	AM 13 12				
" Westfield	AM 5 36	PM 6 07	AM 6 24	PM 6 55	PM 7 26	PM 7 57	AM 8 28	PM 8 59	PM 9 34	PM 10 05	PM 10 15	PM 10 15	PM 10 15	PM 10 15	PM 10 15	PM 10 46	PM 11 17	PM 11 48	AM 12 19	PM 12 50	PM 13 01	AM 13 22	AM 13 22				
" Erie	AM 5 46	PM 6 17	AM 6 34	PM 7 05	PM 7 36	PM 8 07	AM 8 38	PM 9 09	PM 9 44	PM 10 15	PM 10 25	PM 10 25	PM 10 25	PM 10 25	PM 10 25	PM 10 56	PM 11 27	PM 11 58	AM 12 29	PM 13 00	PM 13 11	AM 13 32	AM 13 32				
" Ashtabula	AM 5 56	PM 6 27	AM 6 44	PM 7 15	PM 7 46	PM 8 17	AM 8 48	PM 9 19	PM 9 54	PM 10 25	PM 10 35	PM 10 35	PM 10 35	PM 10 35	PM 10 35	PM 11 06	PM 11 37	PM 12 08	AM 12 39	PM 13 10	PM 13 21	AM 13 42	AM 13 42				
" East Cleveland	AM 6 06	PM 6 37	AM 6 54	PM 7 25	PM 7 56	PM 8 27	AM 8 58	PM 9 29	PM 10 04	PM 10 35	PM 10 45	PM 10 45	PM 10 45	PM 10 45	PM 10 45	PM 11 16	PM 11 47	PM 12 18	AM 12 49	PM 13 20	PM 13 31	AM 13 52	AM 13 52				
" Cleveland (Union Term.)	AM 6 16	PM 6 47	AM 7 04	PM 7 35	PM 8 06	PM 8 37	AM 9 08	PM 9 39	PM 10 14	PM 10 45	PM 10 55	PM 10 55	PM 10 55	PM 10 55	PM 10 55	PM 11 26	PM 11 57	PM 12 28	AM 12 59	PM 13 30	PM 13 41	AM 14 02	AM 14 02				
Ar Linndale	AM 10 10	PM 10 41	AM 11 02	PM 11 33	PM 12 04	PM 12 35	AM 1 06	PM 1 37	PM 2 12	PM 2 43	PM 2 53	PM 2 53	PM 2 53	PM 2 53	PM 2 53	PM 3 24	PM 3 55	PM 4 26	AM 4 57	PM 5 28	PM 5 39	AM 6 00	AM 6 00				
" Sandusky	AM 11 35	PM 12 06	AM 12 28	PM 12 59	PM 1 30	PM 2 01	AM 2 32	PM 3 03	PM 3 38	PM 4 09	PM 4 19	PM 4 19	PM 4 19	PM 4 19	PM 4 19	PM 4 50	PM 5 21	PM 5 52	AM 6 23	PM 6 54	PM 7 05	AM 7 26	AM 7 26				
" Toledo (E. T.)	AM 12 40	PM 1 11	AM 1 33	PM 2 04	PM 2 35	PM 3 06	AM 3 37	PM 4 08	PM 4 43	PM 5 14	PM 5 24	PM 5 24	PM 5 24	PM 5 24	PM 5 24	PM 5 55	PM 6 26	PM 6 57	AM 7 28	PM 7 59	PM 8 10	AM 8 31	AM 8 31				
" Elkhart (C. T.)	AM 3 05	PM 3 36	AM 3 58	PM 4 29	PM 5 00	PM 5 31	AM 6 02	PM 6 33	PM 7 08	PM 7 39	PM 7 49	PM 7 49	PM 7 49	PM 7 49	PM 7 49	PM 8 20	PM 8 51	PM 9 22	AM 9 53	PM 10 24	PM 10 35	AM 10 56	AM 10 56				
" South Bend	AM 3 15	PM 3 46	AM 4 08	PM 4 39	PM 5 10	PM 5 41	AM 6 12	PM 6 43	PM 7 18	PM 7 49	PM 7 59	PM 7 59	PM 7 59	PM 7 59	PM 7 59	PM 8 30	PM 9 01	PM 9 32	AM 10 03	PM 10 34	PM 10 45	AM 11 06	AM 11 06				
" Englewood	AM 3 25	PM 3 56	AM 4 18	PM 4 49	PM 5 20	PM 5 51	AM 6 22	PM 6 53	PM 7 28	PM 7 59	PM 8 09	PM 8 09	PM 8 09	PM 8 09	PM 8 09	PM 8 40	PM 9 11	PM 9 42	AM 10 13	PM 10 44	PM 10 55	AM 11 16	AM 11 16				
Ar Chicago (La Salle St. Sta.)	AM 6 00	PM 6 31	AM 6 53	PM 7 24	PM 7 55	PM 8 26	AM 8 57	PM 9 28	PM 10 03	PM 10 34	PM 10 44	PM 10 44	PM 10 44	PM 10 44	PM 10 44	PM 11 15	PM 11 46	PM 12 17	AM 12 48	PM 13 19	PM 13 30	AM 13 51	AM 13 51				
Mich. Cent. R. R.																											
Ly Buffalo	AM 10 16	PM 10 47	AM 11 09	PM 11 40	PM 12 11	PM 12 42	AM 1 13	PM 1 44	PM 2 19	PM 2 50	PM 3 00	PM 3 00	PM 3 00	PM 3 00	PM 3 00	PM 3 31	PM 4 02	PM 4 33	AM 5 04	PM 5 35	PM 5 46	AM 6 07	AM 6 07				
" Niagara Falls	AM 12 45	PM 1 16	AM 1 38	PM 2 09	PM 2 40	PM 3 11	AM 3 42	PM 4 13	PM 4 48	PM 5 19	PM 5 29	PM 5 29	PM 5 29	PM 5 29	PM 5 29	PM 6 00	PM 6 31	PM 7 02	AM 7 33	PM 8 04	PM 8 15	AM 8 36	AM 8 36				
Ar St. Thomas	AM 1 20	PM 1 51	AM 2 13	PM 2 44	PM 3 15	PM 3 46	AM 4 17	PM 4 48	PM 5 23	PM 5 54	PM 6 04	PM 6 04	PM 6 04	PM 6 04	PM 6 04	PM 6 35	PM 7 06	PM 7 37	AM 8 08	PM 8 39	PM 8 50	AM 9 11	AM 9 11				
" London (L. & P. S. Ry.)	AM 2 43	PM 3 14	AM 3 36	PM 4 07	PM 4 38	PM 5 09	AM 5 40	PM 6 11	PM 6 46	PM 7 17	PM 7 27	PM 7 27	PM 7 27	PM 7 27	PM 7 27	PM 7 58	PM 8 29	PM 9 00	AM 9 31	PM 10 02	PM 10 13	AM 10 34	AM 10 34				
" Windsor	AM 3 00	PM 3 31	AM 3 53	PM 4 24	PM 4 55	PM 5 26	AM 5 57	PM 6 28	PM 7 03	PM 7 34	PM 7 44	PM 7 44	PM 7 44	PM 7 44	PM 7 44	PM 8 15	PM 8 46	PM 9 17	AM 9 48	PM 10 19	PM 10 30	AM 10 51	AM 10 51				
" Detroit (E. T.)	AM 3 15	PM 3 46	AM 4 08	PM 4 39	PM 5 10	PM 5 41	AM 6 12	PM 6 43	PM 7 18	PM 7 49	PM 7 59	PM 7 59	PM 7 59	PM 7 59	PM 7 59	PM 8 30	PM 9 01	PM 9 32	AM 10 03	PM 10 34	PM 10 45	AM 11 06	AM 11 06				
Ar Saginaw (C. T.)	AM 3 25	PM 3 56	AM 4 18	PM 4 49	PM 5 20	PM 5 51	AM 6 22	PM 6 53	PM 7 28	PM 7 59	PM 8 09	PM 8 09	PM 8 09	PM 8 09	PM 8 09	PM 8 40	PM 9 11	PM 9 42	AM 10 13	PM 10 44	PM 10 55	AM 11 16	AM 11 16				
" Bay City	AM 3 40	PM 4 11	AM 4 33	PM 5 04	PM 5 35	PM 6 06	AM 6 37	PM 7 08	PM 7 43	PM 8 14	PM 8 24	PM 8 24	PM 8 24	PM 8 24	PM 8 24	PM 8 55	PM 9 26	PM 9 57	AM 10 28	PM 10 59	PM 11 10	AM 11 31	AM 11 31				
Ar Ann Arbor	AM 3 50	PM 4 21	AM 4 43	PM 5 14	PM 5 45	PM 6 16	AM 6 47	PM 7 18	PM 7 53	PM 8 24	PM 8 34	PM 8 34	PM 8 34	PM 8 34	PM 8 34	PM 9 05	PM 9 36	PM 10 07	AM 10 38	PM 11 09	PM 11 20	AM 11 41	AM 11 41				
" Jackson	AM 4 00	PM 4 31	AM 4 53	PM 5 24	PM 5 55	PM 6 26	AM 6 57	PM 7 28	PM 8 03	PM 8 34	PM 8 44	PM 8 44	PM 8 44	PM 8 44	PM 8 44	PM 9 15	PM 9 46	PM 10 17	AM 10 48	PM 11 19	PM 11 30	AM 11 51	AM 11 51				
Ar Lansing	AM 4 10	PM 4 41	AM 5 03	PM 5 34	PM 6 05	PM 6 36	AM 7 07	PM 7 38	PM 8 13	PM 8 44	PM 8 54	PM 8 54	PM 8 54	PM 8 54	PM 8 54	PM 9 25	PM 9 56	PM 10 27	AM 10 58	PM 11 29	PM 11 40	AM 12 01	AM 12 01				
Ar Grand Rapids	AM 4 20	PM 4 51	AM 5 13	PM 5 44	PM 6 15	PM 6 46	AM 7 17	PM 7 48	PM 8 23	PM 8 54	PM 9 04	PM 9 04	PM 9 04	PM 9 04	PM 9 04	PM 9 35	PM 10 06	PM 10 37	AM 11 08	PM 11 39	PM 11 50	AM 12 11	AM 12 11				
Ar Albion	AM 4 30	PM 5 01	AM 5 23	PM 5 54	PM 6 25	PM 6 56	AM 7 27	PM 7 58	PM 8 33	PM 9 04	PM 9 14	PM 9 14	PM 9 14	PM 9 1													



WESTBOUND				EASTBOUND				44-30				16-12				24				24-48				40			
	Daily	1-3 Daily	5 Daily	15 Daily	11 Daily	19 Daily	29 Daily	59 Daily	45-43 Daily	Daily	4 Daily	Daily	12 Daily	24 Daily	24-48 Daily	18-22 Daily	40 Daily	D									
<b>N. Y. Central</b>				<b>C. C. C. &amp; St. L. (Big 4)</b>				<b>C. C. C. &amp; St. L. (Big 4)</b>				<b>C. C. C. &amp; St. L. (Big 4)</b>				<b>C. C. C. &amp; St. L. (Big 4)</b>				<b>C. C. C. &amp; St. L. (Big 4)</b>							
Ly New York (G.C.Term.)	8 30	9 00		3 00	6 20	7 45	9 15	11 40	12 05	Ly St. Louis (C.T.)			9 00	Noon	Noon		6 00										
" N. Y. (125th St.)	8 40	9 11					9 25		h12 15	Ly Mattoon			11 22	2 25	2 25		8 25										
" Yonkers		9 28			R6 47		9 42			" Terre Haute			12 21	3 25	3 25		9 27										
" Harmon	9 23	9 54		A3 48	A7 10	A8 34	A10 09	12h32	12 53	" Greencastle			P12 56	A3 59	A3 59												
" Poughkeepsie		10 46				7 25	11 09		2 24	Ly Peoria				10 45													
<b>B. &amp; A. R. R.</b>				<b>B. &amp; A. R. R.</b>				<b>B. &amp; A. R. R.</b>				<b>B. &amp; A. R. R.</b>				<b>B. &amp; A. R. R.</b>				<b>B. &amp; A. R. R.</b>							
Ly Boston (So. Sta.)	4105			Noon	PM	PM	PM	PM	PM	Ly Indianapolis		10 40		1 45	4 55	4 55	10 50	10									
" Worcester	5145			1 13	4 55	4 55	7 42		12 32	" Anderson		11 27	Y2 29	5 40	5 40		11 36	10									
" Springfield	7 45			2 40	6 16	6 16	9 02		2 05	" Muncie		11 54	2 55	6 07	6 07		12 03	11									
" Pittsfield	9 46			4 25	7 58	7 58	10 48		3 52	" Union City		12 30						12									
" Chatham	10 36			5 12	8 40	8 40			4 34	" Bellefontaine (E.T.)		2 40	5 33	8 43	8 43		2 43	2									
" Albany	11 17			5 45	9 15	9 15	12 05		5 10	" Marion		3 20		9 30	9 30			3									
<b>N. Y. C. R. R.</b>				<b>N. Y. C. R. R.</b>				<b>N. Y. C. R. R.</b>				<b>N. Y. C. R. R.</b>				<b>N. Y. C. R. R.</b>				<b>N. Y. C. R. R.</b>							
Ly Albany	11 25	12 30		6 00	9 33	10 49	12 40		5 40	Ar Cleveland		5 45		8 25	11 30	11 30	5 40	7									
" Schenectady		12 58		6 29	10 00	11 17	1 11		6 15	Ly Cincinnati		9 00	12 25	8 10	5 50	5 50	7 35	11									
" Utica	1 15	2 55		7 52	11 24	12 45	2 42		8 00	" Middletown		9 45	1 08	3 53	6 35	6 35	8 20	12									
" Syracuse	2 17	4 08		9 02	12 31	1 52	3 53		9 33	" Dayton		10 14	1 31	4 16	7 05	7 05	8 50	1									
" Rochester	3 44	6 00		10 33	1 58	3 19	5 30	7 09	11 16	" Springfield		10 55	2 05	4 50	7 42	7 42	9 27	2									
Ar Buffalo (Cent.Term.)	5 00	7 40		11 49	3 12	4 33	7 00	8 30	12 43	" Columbus		12 00	3 00	5 45	8 45	8 45	10 30	3									
<b>N. Y. C. R. R.</b>				<b>N. Y. C. R. R.</b>				<b>N. Y. C. R. R.</b>				<b>N. Y. C. R. R.</b>				<b>N. Y. C. R. R.</b>				<b>N. Y. C. R. R.</b>							
Ly Buffalo (Cent. Term.)	5 16	7 46	10 19	12 02	3 25	4 45	7 20	8 47	1 07	Ly Cleveland		4 00	6 02	8 35	8 35	11 40	11 40	2 17									
Ar Cleveland	9 30	11 50	2 18	7 05	8 30	11 59	12 30	5 23		Ar Buffalo (Cent.Term.)		8 52	9 57	11 54	11 54	2 59	2 59	6 55									
<b>C. C. C. &amp; St.</b>																											

Miles	WESTBOUND					EASTBOUND				
		Daily	Daily	Daily	Ex. Sun.	Daily		Ex. Sun.	Daily	Daily
	<i>B. &amp; A. Nos.</i>		25	37			<i>P. &amp; L. E. Nos.</i>		5	35
		PM	PM	PM	PM	AM		AM	AM	PM
0.0	Lv Boston		r 1 45	7 30			Lv Pittsburgh		8 20	5 00
44.3	" Worcester		r 2 52	8 49			" Beaver		8 52	5 33
98.3	" Springfield		r 4 10	10 15			" B. F.-N. Brighton		8 58	5 38
200.4	Ar Albany		r 6 55	1 20			" New Castle (uptown)		9 12	5 47
	<i>N. Y. C. Main Line Nos.</i>	309	67	63		9	Ar Youngstown		9 45	6 25
200.4	Lv Albany		7 19	2 52		9 10	<i>N. Y. C. Franklin Div. Nos.</i>	16	82	84
295.0	" Utica		9 12	4 43		11 36	Lv Youngstown		9 55	6 28
347.8	" Syracuse		9 20	10 25	5 52	1 05	" Andover	For local service see time	8 40	10 42
428.1	" Rochester		11 18	11 48	7 34	3 04	Ar Ashtabula	table form 100	9 30	11 25
494.2	Ar Buffalo (Cent. Term.)		12 40	1 03	9 00	4 32	<i>N. Y. C. Main Line Nos.</i>			
	<i>M. C. Nos.</i>		82			74	Lv Ashtabula			
	Lv Toronto (C. P.)		8 00			1 15	Ar Painesville			
	" Hamilton (T. H. & B.)		9 05			2 20	Ar Cleveland (Un. Term.)			
	Ar Buffalo (Cent. Term.)		11 05			4 25	<i>N. Y. C. Main Line Nos.</i>	60	56	84
	<i>N. Y. C. Main Line Nos.</i>	79		81		9	Lv Ashtabula	9 45	11 39	8 05
0.0	Lv Buffalo (Cent. Term.)		1 32	10 20		4 55	" Erie	10 45	12 28	8 55
87.7	" Erie		3 06	12 20		6 40	Ar Buffalo (Cent. Term.)	12 42	2 12	10 43
128.5	Ar Ashtabula		3 50	1 20		7 35	<i>M. C. Nos.</i>		79	
	<i>N. Y. C. Main Line Nos.</i>	72					Lv Buffalo (Cent. Term.)		2 45	
	Lv Cleveland (Un. Term.)		12 55				" Hamilton (T. H. & B.)		4 55	
	" Painesville		1 50				" Toronto (C. P.)		6 00	
	Ar Ashtabula		2 40				<i>N. Y. C. Main Line Nos.</i>	50	56	12 68
128.5	Lv Ashtabula		4 10	1 25	5 45	7 40	Lv Buffalo (Cent. Term.)	1 00	2 37	11 56
153.1	" Andover		4 45	2 03	6 25	8 19	Ar Rochester	2 13	3 54	4 43
191.4	Ar Youngstown		5 45	3 05		9 10	" Syracuse	3 40	5 22	r 2 31
	<i>P. &amp; L. E. Nos.</i>	38		10		34	" Utica	4 43	6 38	7 22
191.4	Lv Youngstown		5 45	3 15		9 15	" Albany	6 28	8 38	r 5 13
212.6	Ar New Castle (uptown)		6 41	3 51		9 58	<i>B. &amp; A. Nos.</i>		42	26
227.3	" B. F.-N. Brighton		aa	4 05		10 03	Lv Albany		1 00	r 6 00
230.5	" Beaver		aa	4 11		10 09	Ar Springfield		3 57	r 8 50
256.3	Ar Pittsburgh		7 25	4 50		10 45	" Worcester		5 26	r 10 14
		AM		PM	PM	PM	Ar Boston		6 40	r 11 20
								PM	AM	AM

SOUTHBOUND										NORTHBOUND									
	Daily	Daily	Daily	Daily	Daily	Daily	Daily	Daily		Daily	Daily	Daily	Daily	Daily	Daily	Daily			
	AM	AM	AM	PM	PM	PM	PM	PM		AM	AM	AM	PM	PM	PM	PM			
Lv Westfield	6:30	8:53	11:39	2:31	3:47	6:29	8:56	11:31	Lv Jamestown	7:05	10:15	1:55	2:40	5:30	7:55	8:25			
Ar Point Chautauqua	7:00	9:19	12:05	2:57	4:13	6:56	9:23	11:58	Ar Point Chautauqua	10:50	1:45	2:15	5:00	7:30	8:00	8:25			
Lv Jamestown	7:43	9:59	12:42	3:36	4:53	7:36	9:59	12:33		8:03	11:18	2:18	5:01	7:18	8:18	8:25			
										AM	AM	PM	PM	PM	PM				

**For Parlor, Sleeping and Dining Car Service, See Pages 15 to 22**

Main Line Train Nos.				Adirondack Division				Main Line Train Nos.				Adirondack Division				
51		19		45-43				8		2		14		Sun.		
Ex. Sun.		Daily		Daily				Ex. Sun.		Ex. Sun.		Sun. Only		Daily		
AM		PM		AM				AM		AM		AM		PM		
Ly New York (G. C. Term.)	8 30	7 45		12 05				Ly Montreal (Windsor Sta.)	8 35	9 05	6 25					
Ly New York (125 St. Sta.)	7 35			11 15				Ly Montreal West.	9 47	9 59	17					
Ly Albany	11 25	10 49		5 40				Ly Valleyfield	9 50	11 23	8 30					
Ly Utica	1 07	12 38		7 43				Ar Malone	10 50	11 23	8 30					
Main Line Train Nos.				68				Main Line Train Nos.				68				
Ly Chicago	5 30			3 10				Ar Malone	11 09	11 35	8 45					
Ly Chicago (M.C.R.R.)	10 00							Ly Loon Lake	11 52	12 28	9 39					
Ly Toledo (E. T.)	11 53			9 10				Ar Lake Clear Jet.	12 25	1 00	10 12					
Ly Cleveland	5 50	4 00		9 50				Ar Saranac Lake	1 25	1 30	10 40					
Ly Buffalo (Cent. Term.)	9 45	7 35		3 23				Ar Lake Placid		1 55						
Ly Rochester	11 04	10 46		4 43				Ly Lake Placid	11 30	12 15	9 15					
Ly Syracuse	12 36	12 20		6 14				Ar Saranac Lake	9 35	12 40	9 45					
Ar Utica	1 36	11 22		7 22				Ly Lake Clear Jet.	9 03	12 35	11 30					
								Ar Saranac Inn	9 08	12 45	11 50					
Adirondack Division				8 5 11 13				Tupper Lake Jet.				9 37 1 12 1 44 11 10				
Ly Utica	1 43	1 45	18 55	8 55				Ly Childwood	9 51	1 25	1 58	11 14				
Ar Forestport	7 45	12 46	9 52	9 55				Ly Horseshoe	10 03	1 36	2 10	11 27				
Ly Woodgate	7 56	12 56	10 03	10 08				Ly Sabattis	10 12	1 45	2 19	11 35				
Ly McKeever	8 06	1 06	10 13	10 21				Ly Beaver River	10 40	2 21	2 47	12 00				
Ly Thendara	3 35	3 25	10 33	10 44				Ly Big Moose	10 55	2 38	3 04	12 07				
Ly Carter	7 45	13 35	11 03	11 04				Ar Carter	11 05	7 38	11 7	12 26				
Ar Big Moose	3 57	3 45	10 55	11 07				Ly Thendara	11 20	2 53	3 32	12 40				
Ly Beaver River	4 15	14 00	11 10	11 24				Ly McKeever	11 35	3 09	3 47	12 55				
Ly Sabattis	4 47	14 26	11 40	11 54				Ly Woodgate	11 46	7 32	3 58	11 05				
Ly Horseshoe	7 47	14 34	11 49	12 03				Ly Forestport	11 56	7 35	4 07	11 15				
Ly Childwood	5 15	12 15	12 01	12 16				Ar Utica	12 40	4 30	4 50	2 00				
Ly Tupper Lake Jet.	5 29	12 32	12 10	12 35				Main Line Train Nos.				51 5 39 29				
Ar Saranac Inn	5 53	15 36	12 45	12 59				Ly Utica	1 15	4 37	6 12	2 42				
Ly Lake Clear Jet.	5 58	5 43	12 50	1 05												

Miles	STATIONS (Eastern Time)	52 Daily	4 Daily	88 Daily	STATIONS (Eastern Time)
		AM	PM	PM	
0.0	Ly Toledo (M. C. Term.)	8 50	1 30	11 45	(P. & L. E. R. R.)
57.6	Ly Detroit	8 50	1 30	1 55	" Beaver
104.4	" Sandusky	10 55	4 08		" New Castle (Uptown)
139.1	" Elyria	11 43	4 45		" Youngstown
164.3	Ar Cleveland	12 28	5 45	11 10	(Erie R. R.)
	Ly Youngstown	1 27	6 00	4 20	Ly Youngstown
230.6	Ly Cleveland	2 50	7 52	5 53	Ly Cleveland
	(P. & L. E. R. R.)				Ly Cleveland
	Ly Youngstown	3 00	7 37	6 00	" Elyria
251.8	" New Castle (Uptown)	3 51	8 14	6 41	" Sandusky
269.7	" Beaver	4 11	8 30	E	" Toledo
295.5	Ar Pittsburgh	4 54	9 05	7 30	Ar Detroit (M. C. Term.)

Miles	STATIONS (N.Y.C.R.R.)	52 Daily	44 Daily	80 Daily	90 Daily	STATIONS	151 Daily	60 Daily
		AM	AM	PM	PM		AM	PM
0.0	lv Chicago.....	1 50	8 30	8 00	11 40	(P. & L.E.R.R.)		
1.0	(LaSalle St. Sta.)					lv Pittsburgh.....	8 20	12 1
25.2	" Gary.....	8 13	8 43			lv Beaver.....	8 32	12 1
100.6	" Elkhart.....	4 45	11 05	10 25	1 49	" New Castle.....	9 50	2 1
233.6	" Toledo (E.T.).....	9 55	3 08	1 55	5 20	lv Youngstown.....	9 50	2 1
340.2	lv Cleveland.....	12 28	11 45	14 10	7 40	(Erie R.R.)		
	(Erie R.R.)					lv Youngstown.....	10 00	2 2
	lv Cleveland.....	1 20	6 00	4 20	8 30	" Niles.....	10 14	2 2
392.6	" Warren.....	2 32	7 07	5 30	9 43	" Warren.....	10 23	2 3
397.8	" Niles.....	2 40	7 15	6 39	9 52	lv Cleveland.....	11 40	3 2
406.5	" Youngstown.....	2 57	7 32	5 55	10 05	(C. & G.R.R.)		
	(P. & L.E.R.R.)					lv Cleveland.....	12 40	4 0
	lv Youngstown.....	3 00	7 37	6 00	10 10	lv Toledo (E.T.).....	2 58	6 6
427.7	" New Castle.....	3 51	8 14	6 41	10 35	" Elkhart.....	4 53	7 7
445.6	" Beaver.....	4 11	8 30	7 05	11 05	" Gary.....		7 19
471.4	" Pittsburgh.....	4 40	9 05	7 30	11 40	" Englewood.....	7 00	9 0
	PM PM AM AM					lv Youngstown.....	7 15	9 1
	(P. & L.E.R.R.)					(C. & G.R.R.)		

Miles	STATIONS			STATIONS		
		56 Daily	52 Daily	68 Daily		
		PM	PM	PM		
0.0	Lv Cincinnati (Big Four) ..	11 50		5 50	Lv Toronto (C. P.) ..	
124.2	Lv Columbus ..	3 25		8 45	Lv Hamilton (T. H. & B.) ..	
262.2	Ar Cleveland ..	7 30		11 20	Ar Buffalo (Cent. Term.) (M. C.) ..	
0.0	Lv Cleveland (N. Y. C.) ..	10 15	12 43	11 50	Lv Buffalo (Cent. Term.) ..	
185.1	Ar Buffalo (Cent. Term.) ..	2 12	5 12	3 15	Ar Cleveland (N. Y. C.) ..	
	Lv Buffalo (Cent. Term.) (M. C.) ..	2 45	5 30	4 55	Lv Cleveland (Big Four) ..	
242.7	Ar Hamilton (T. H. & B.) ..	4 55	7 40	6 55	Ar Columbus ..	
282.7	Ar Toronto (C. P.) ..	6 00	8 47	8 00	Ar Cincinnati ..	
		PM	PM	AM		

**For Parlor, Sleeping and Dining Car Service, See Main Line Trains, Pages 15 to 22**

NORTH-BOND									
Miles	STATIONS	51	71	71	45				
		Daily	Rut. 51	Rut. 43	Daily				
0.0	Ly New York (G.C.T.)	AM	PM	PM	AM				
4.2	" New York (125th St.)	8 30	9 30	9 30	12 05				
32.7	" Harmon . . . . .	7/9 23	7/9 40	7/9 40	12 15				
142.2	" Albany . . . . .	11 33	10 24	10 24	12 38				
148.4	* Troy (N.Y.C.R.R.)	11 56	1 00	1 00	17 05				
.....	Ly Troy (B. & M. R.R.)	12 04	1 08	1 08	8 00				
201.9	* Manchester (Rut.R.)	1 25	2 36	2 36	46				
233.3	" Rutland . . . . .	2 20	3 19	3 19	10 38				
239.3	" Proctor . . . . .	2 36		4 42	11 01				
249.4	" Brandon . . . . .	2 54		5 00	11 20				
266.5	" Middlebury . . . . .	3 00		5 26	11 58				
279.3	" Vergennes . . . . .	3 40		5 50	12 28				
302.6	" Burlington . . . . .	4 55		6 04	1 30				
391.4	* Montreal (C.N.Ry.)	7 15	7 50						
507.7	" Ottawa (C.N.Ry.)		12 10						
554.6	" Quebec (C.N.Ry.)	6 45	2 00						
646.0	* Murray Bay (C.N.Ry.)	AM	PM	AM	PM				
SOUTH-BOND									
Miles	STATIONS	144	82	72	52				
		Daily	Daily	Daily	Daily				
0.0	Ly Murray Bay (C.N.Ry.)	PM	PM	PM	PM				
4.2	" Quebec (C.N.Ry.)	11 55			* 1 30				
32.7	* Ottawa (C.N.Ry.)	9 25			1 40				
142.2	" Montreal (C.N.Ry.)	12 53	2 00	9 00	12 10				
148.4	* Burlington (Rut.R.R.)	12 53	2 36	9 45					
201.9	" Vergennes . . . . .	1 15	2 56	10 17					
233.3	" Middlebury . . . . .	1 42	3 23	10 46					
239.3	" Brandon . . . . .	1 57	3 38	11 04					
249.4	" Proctor . . . . .	2 20	3 55	1 52	1 52				
266.5	" Rutland . . . . .	3 06	4 50	2 36	2 36				
279.3	* Manchester	4 30	8 30	4 05	4 05				
302.6	* Troy (B. & M. R.R.)	4 44			4 15				
391.4	Ly Troy (N.Y.C.R.R.)	8 25	Note						
507.7	* Harmon . . . . .	7 27	Note		6 44				
554.6	" New York (125th St.)	7 48	4 33						
646.0	* New York (G.C.Term.)	8 00	4 45		7 43				
		PM	AM		AM				

NORTH-BOUND									
STATIONS	51	1	39	17	81	65	45		
	D. & H. 35	Ex. Sun.	Ex. Sun.	Ex. Sun.	Ex. Sun.	Ex. Sun.	Ex. Sun.		
Ly N.Y. (G.C.Tm.)	8430	9400	1215	5445	7550	1015	12405		
" N.Y. (125th St.)	a8 40	h9 11	1 25	b7 8	b8 00	10h25	12h15		
" Harmon	a9 23	9 54	2 06	6 37	8 44	11h09	12 58		
Ar Albany	11 19	12 15	4 04	8 39	11 20		3 40		
Ar Troy						1h25			
Ly Albany	12 10	12 35	5 15	9 00	12 10		7 00		
Ar Troy						1 31			
Ar Saratoga Springs	1 25	1 38	6 40	10 15	1 27		8 20		
" North Creek							11 40		
" Lake George							9 48		
" Ft. Ticonderoga		3 21	8 43		3 23	Pullman Cars only	10 45		
" Westport		4 07	9 30		4 12		11 42		
" Plattsburg		5 20	10 48		5 50		1 25		
" Montreal		7 30			8 35				
" Ottawa (C.P.Ry.)		1 00				11 45			
" Quebec (C.P.Ry.)	PM	6345	PM	PM	AM	2000	PM		

**, Sleeping and Dining Car Service, See Main Line Trains, Pages 15 to 22**





## WATER LEVEL ROUTE

The New York Central Lines operate 11,800 miles of railroad in nine states and Canada in the great commercial and industrial area between the Atlantic Seaboard and the Mississippi Valley, providing the highest type of passenger and freight service.

NEW YORK CENTRAL—MICHIGAN CENTRAL  
BOSTON & ALBANY—BIG FOUR  
PITTSBURGH & LAKE ERIE



Table 18 Main Line—New York to Albany, Utica, Syracuse, Rochester, Buffalo and Niagara Falls

Miles	Elevation Above Sea	NORTH AND WEST BOUND	199 Ex. Sun.	199 Ex. Sun.	9 Daily Note	75 Ex. Sun.	168 Ex. Sun.	195 Ex. Sun.	51 Daily	541 Ex. Sun.	1 Daily	198 Ex. Sun.	93 Ex. Sun.	147 Ex. Sun.	165 Ex. Sun.	39 Daily	519 Ex. Sun.	441 Daily	141 Daily	178 Ex. Sun.	15 Daily	309 Daily	25 Daily	67 Daily	67-487 Daily
0	38	N. Y. (G. C. Term.)	2 40	5 00	6 10	7 45	8 11	8 30	9 00	9 37	10 30	11 15	11 32	11 42	11 59	1 15	2 15	2 05	3 00	4 15	4 20	4 20	4 15	4 20	4 20
4.2	43	N. Y. (125th St.)	2 40	5 00	6 10	7 45	8 11	8 30	9 00	9 37	10 30	11 15	11 32	11 42	11 59	1 15	2 15	2 05	3 00	4 15	4 20	4 20	4 15	4 20	4 20
14.5	20	Yonkers	3 18	5 27	6 41	8 12	8 39	8 58	9 28	10 06	10 57	11 42	11 59	12 13	12 24	1 24	2 24	2 14	3 09	4 24	4 29	4 29	4 24	4 29	4 29
24.5	4	Tarrytown	3 39	5 40	6 54	8 25	8 52	9 11	9 41	10 32	11 23	12 08	12 25	12 36	12 51	1 31	2 31	2 21	3 16	4 31	4 36	4 36	4 31	4 36	4 36
30.2	6	Ossining	3 55	5 58	7 12	8 43	9 10	9 29	9 59	10 50	11 41	12 26	12 43	12 54	1 09	1 49	2 49	2 39	3 34	4 49	4 54	4 54	4 49	4 54	4 54
32.7	12	Harmon	4 11	6 14	7 28	8 59	9 26	9 45	10 15	11 06	11 57	12 42	12 59	1 10	1 25	2 05	3 05	2 55	3 50	4 55	5 00	5 00	4 55	5 00	5 00
40.6	6	Peekskill	4 36	6 39	7 53	9 24	9 51	10 10	10 40	11 31	12 22	13 07	13 24	13 35	1 40	2 20	3 20	3 10	4 05	5 10	5 15	5 15	5 10	5 15	5 15
45.4	15	Manitow	4 56	6 59	8 13	9 44	10 11	10 30	11 00	11 51	12 42	13 27	13 44	13 55	1 50	2 30	3 30	3 20	4 15	5 20	5 25	5 25	5 20	5 25	5 25
49.1	10	Cold Spring	5 16	7 19	8 33	10 04	10 31	10 50	11 20	12 11	13 02	13 47	14 04	14 15	1 55	2 35	3 35	3 25	4 20	5 25	5 30	5 30	5 25	5 30	5 30
51.8	10	Beacon (Newburgh)	5 36	7 39	8 53	10 24	10 51	11 10	11 40	12 31	13 22	14 07	14 24	14 35	2 00	2 40	3 40	3 30	4 25	5 30	5 35	5 35	5 30	5 35	5 35
58.3	5	Chelsea	5 56	7 59	9 13	10 44	11 11	11 30	12 00	12 51	13 42	14 27	14 44	14 55	2 10	2 50	3 50	3 40	4 35	5 40	5 45	5 45	5 40	5 45	5 45
61.8	7	New Hamburg	6 16	8 19	9 33	11 04	11 31	11 50	12 20	13 11	14 02	14 47	15 04	15 15	2 20	3 00	4 00	3 50	4 45	5 50	5 55	5 55	5 50	5 55	5 55
72.8	36	Poughkeepsie	6 36	8 39	9 53	11 24	11 51	12 10	12 40	13 31	14 22	15 07	15 24	15 35	2 30	3 10	4 10	4 00	4 55	6 00	6 05	6 05	6 00	6 05	6 05
78.6	26	Staubsburg	6 56	8 59	10 13	11 44	12 11	12 30	13 00	13 51	14 42	15 27	15 44	15 55	2 40	3 20	4 20	4 10	5 05	6 10	6 15	6 15	6 10	6 15	6 15
88.4	7	Rhinecliff (Kingston)	7 16	9 19	10 33	12 04	12 31	12 50	13 20	14 11	15 02	15 47	16 04	16 15	2 50	3 30	4 30	4 20	5 15	6 20	6 25	6 25	6 20	6 25	6 25
94.0	11	Barrytown	7 36	9 39	10 53	12 24	12 51	13 10	13 40	14 31	15 22	16 07	16 24	16 35	3 00	3 40	4 40	4 30	5 25	6 30	6 35	6 35	6 30	6 35	6 35
98.3	6	Tivoli	7 56	9 59	11 13	12 44	13 11	13 30	14 00	14 51	15 42	16 27	16 44	16 55	3 10	3 50	4 50	4 40	5 35	6 40	6 45	6 45	6 40	6 45	6 45
103.7	7	Germantown	8 16	10 19	11 33	13 04	13 31	13 50	14 20	15 11	16 02	16 47	17 04	17 15	3 20	4 00	5 00	4 50	5 45	6 50	6 55	6 55	6 50	6 55	6 55
109.4	8	Greendale (Catskill)	8 36	10 39	11 53	13 24	13 51	14 10	14 40	15 31	16 22	17 07	17 24	17 35	3 30	4 10	5 10	5 00	5 55	7 00	7 05	7 05	7 00	7 05	7 05
113.7	7	Hudson	8 56	10 59	12 13	13 44	14 11	14 30	15 00	15 51	16 42	17 27	17 44	17 55	3 40	4 20	5 20	5 10	6 05	7 10	7 15	7 15	7 10	7 15	7 15
118.0	9	Stockport	9 16	11 19	12 33	14 04	14 31	14 50	15 20	16 11	17 02	17 47	18 04	18 15	3 50	4 30	5 30	5 20	6 15	7 20	7 25	7 25	7 20	7 25	7 25
121.2	10	Newton Hook (Coxsackie)	9 36	11 39	12 53	14 24	14 51	15 10	15 40	16 31	17 22	18 07	18 24	18 35	4 00	4 40	5 40	5 30	6 25	7 30	7 35	7 35	7 30	7 35	7 35
123.6	9	Stuyvesant	9 56	11 59	13 13	14 44	15 11	15 30	16 00	16 51	17 42	18 27	18 44	18 55	4 10	4 50	5 50	5 40	6 35	7 40	7 45	7 45	7 40	7 45	7 45
129.6	7	Schodack Landing	10 16	12 19	13 33	15 04	15 31	15 50	16 20	17 11	18 02	18 47	19 04	19 15	4 20	5 00	6 00	5 50	6 45	7 50	7 55	7 55	7 50	7 55	7 55
133.6	12	Castleton-on-Hudson	10 36	12 39	13 53	15 24	15 51	16 10	16 40	17 31	18 22	19 07	19 24	19 35	4 30	5 10	6 10	6 00	6 55	8 00	8 05	8 05	8 00	8 05	8 05
142.2	30	Albany	10 56	12 59	14 13	15 44	16 11	16 30	17 00	17 51	18 42	19 27	19 44	19 55	4 40	5 20	6 20	6 10	7 05	8 10	8 15	8 15	8 10	8 15	8 15
148.4	29	Troy	11 16	13 19	14 33	16 04	16 31	16 50	17 20	18 11	19 02	19 47	20 04	20 15	4 50	5 30	6 30	6 20	7 15	8 20	8 25	8 25	8 20	8 25	8 25
142.2	29	Schenectady	11 36	13 39	14 53	16 24	16 51	17 10	17 40	18 31	19 22	20 07	20 24	20 35	5 00	5 40	6 40	6 30	7 25	8 30	8 35	8 35	8 30	8 35	8 35
159.1	251	Hoffman's	11 56	13 59	15 13	16 44	17 11	17 30	18 00	18 91	18 82	19 17	19 34	19 45	5 10	5 50	6 50	6 40	7 35	8 40	8 45	8 45	8 40	8 45	8 45
168.4	239	Amsterdam	12 16	14 19	15 33	17 04	17 31	17 50	18 20	19 11	20 02	20 47	21 04	21 15	5 20	6 00	7 00	6 50	7 45	8 50	8 55	8 55	8 50	8 55	8 55
175.0	272	Tribe Hill	12 36	14 39	15 53	17 24	17 51	18 10	18 40	19 31	20 22	21 07	21 24	21 35	5 30	6 10	7 10	7 00	7 55	9 00	9 05	9 05	9 00	9 05	9 05
180.6	299	Fonda (Fultonville)	12 56	14 59	16 13	17 44	18 11	18 30	19 00	19 91	20 02	20 47	21 04	21 15	5 40	6 20	7 20	7 10	8 05	9 10	9 15	9 15	9 10	9 15	9 15
185.5	292	Sprakers	13 16	15 19	16 33	18 04	18 31	18 50	19 20	20 11	21 02	21 47	22 04	22 15	5 50	6 30	7 30	7 20	8 15	9 20	9 25	9 25	9 20	9 25	9 25
194.1	296	Palatine Bdg. (Canajoharie)	13 36	15 39	16 53	18 24	18 51	19 10	19 40	20 31	21 22	22 07	22 24	22 35	6 00	6 40	7 40	7 30	8 25	9 30	9 35	9 35	9 30	9 35	9 35
197.0	298	Fort Plain	13 56	15 59	17 13	18 44	19 11	19 30	20 00	20 91	21 02	21 47	22 04	22 15	6 10	6 50	7 50	7 40	8 35	9 40	9 45	9 45	9 40	9 45	9 45
200.1	306	St. Johnsville	14 16	16 19	17 33	19 04	19 31	19 50	20 20	21 11	22 02	22 47	23 04	23 15	6 20	7 00	8 00	7 50	8 45	9 50	9 55	9 55	9 50	9 55	9 55
206.0	313	Little Falls	14 36	16 39	17 53	19 24	19 51	20 10	20 40	21 31	22 22	23 07	23 24	23 35	6 30	7 10	8 10	8 00	8 55	10 00	10 05	10 05	10 00	10 05	10 05
215.7	370	Herkimer (Mohawk-Ilion)	14 56	16 59	18 13	19 44	20 11	20 30	21 00	21 91	22 02	22 47	23 04	23 15	6 40	7 20	8 20	8 10	9 05	10 10	10 15	10 15	10 10	10 15	10 15
222.8	393	North Ilion (Ilion)	15 16	17 19	18 33	20 04	20 31	20 50	21 20	22 11	23 02	23 47	24 04	24 15	6 50	7 30	8 30	8 20	9 15	10 20	10 25	10 25	10 20	10 25	10 25
226.2	394	Utica	15 36	17 39	18 53	20 24	20 51	21 10	21 40	22 31	23 22	24 07	24 24	24 35	7 00	7 40	8 40	8 30	9 25	10 30	10 35	10 35	10 30	10 35	10 35
233.8	404	Whitesboro	15 56	17 59	19 13	20 44	21 11	21 30	22 00	22 91	23 02	23 47	24 04	24 15	7 10	7 50	8 50	8 40	9 35	10 40	10 45	10 45	10 40	10 45	10 45
240.7	410	Oriskany	16 16	18 19	19 33	21 04	21 31	21 50	22 20	23 11	24 02	24 47	25 04	25 15	7 20	8 00	9 00	8 50	9 45	10 50	10 55	10 55	10 50	10 55	10 55
243.7	418	Rome	16 36	18 39	19 53	21 24	21 51	22 10	22 40	23 31	24 22	25 07	25 24	25 35	7 30	8 10	9 10	9 00	9 55	11 00	11 05	11 05	11 00	11 05	11 05
250.6	447	Greenway	16 56	18 59	20 13	21 44	22 11	22 30	23 00	23 91	24 02	24 47	25 04	25 15	7 40	8 20	9 20	9 10	10 05	11 10	11 15	11 15	11 10	11 15	11 15
255.1	460	Verona	17 16	19 19	20 33	22 04	22 31	22 50	23 20	24 11	25 02	25 47	26 04	26 15	7 50	8 30	9 30	9 20	10 15	11 20	11 25	11 25	11 20	11 25	11 25
259.2	463	Onelida	17 36	19 39	20 53	22 24	22 51	23 10	23 40	24 31	25 22	26 07	26 24	26 35	8 00	8 40	9 40	9 30	10 25	11 30	11 35	11 35	11 30	11 35	11 35
263.7	435	Wampsville	17 56	19 59	21 13	22 44	23 11	23 30	24 00	24 91	25 02	25 47	26 04	26 15	8 10	8 50	9 50	9 40	10 35	11 40	11 45	11 45	11 40	11 45	11 45
268.5	447	Canastota	18 16	20 19	21 33	23 04	23 31	23 50	24 20	25 11	26 02	26 47	27 04	27 15	8 20	9 00	10 00	9 50	10 45	11 50	11 55	11 55	11 50	11 55	11 55
272.6	412	Sullivan																							



Table 19 Main Line—Buffalo to Cleveland, Toledo, Elkhart and Chicago

Mile.	Elevation Above Sea	Stations	87	67	607	641 Ex. Sun.	79	11	X19	601 Ex. Sun.	7	19	35 Ex. Mon.	23	251	151	623 Ex. Sun.	647	81	609	629 Sun. only	627 Ex. Sun.	43	9	91	9	8	89	5	15	25
			Daily	Daily	Daily		Daily	Daily	Daily		Daily	Daily		Daily	Daily	Daily		Daily	Daily	Daily	Sun. only	Ex. Sun.	Daily	Daily	Daily	Daily	Daily	Daily	Daily	Daily	Daily
0.0	582	Ly BUFFALO (Cont. Term.)		1 15			1 32	3 25			3 52	4 45		7 20		8 47				10 20			1 07	4 55	5 16		7 46		10 19	12 02	12 20
8.8	612	" Bay View																													
10.0	627	" Athol Springs																													
13.0	707	" Lake View																													
16.1	700	" North Evans																													
18.0	701	Ly Derby												b7 47																	
22.1	676	" Angola												b7 55																	
26.5	630	" Farnham												18 03																	
28.3	600	" Irving														9 37								1 59	5 44	6 06		8 34		11 09	
32.2	622	" Silver Creek																						2 25	6 04	6 27		8 54		11 29	
41.0	593	Ly Brockton									4 41			18 15												6 46					
50.0	587	" Westfield									5 05			18 37		9 58															
58.2	695	" Ripley												18 59																	
66.0	749	" North East												19 11																	
73.7	801	Ly Harbor Creek																													
80.2	729	" Erie					3 06				5 42	6 27		9 31		10 37								3 05	6 40	7 05		9 35		12 10	
87.7	682	" Swanville												9 51																	
95.9	728	" Fairview																													
98.5	707	Ly North Girard																													
107.6	661	Ly Springfield																													
115.2	646	" Conneaut												10 05																	
122.7	668	" Kingsville																													
128.5	644	" Ashtabula					3 50				6 15	6 32	7 10	10 24		11 20								4 00	7 35	8 07		10 26		12 59	
133.2	647	" Saybrook									6 23			10 37																	
137.8	664	" Geneva									6 31																				
141.0	702	" Unionville									6 42																				
143.3	712	" Madison									6 59			11 00																	
148.2	703	" Painesville									7 03	7 05												4 32				10 55			
154.0	646	" Mentor									7 12																				
160.1	648	" Willoughby									7 21																				
164.5	633	" Wickliffe									7 31																				
168.8	653	" Nottingham									7 40																				
173.3	625	" East Cleveland									7 55	7 45	8 15	11 46		12 15															
178.1	617	" East Cleveland (Un. Term.)									8 10	8 00	8 30	11 59		12 30															
185.1	581	Ly Cleveland (Un. Term.)																													
185.1	581	Ly Cleveland (Un. Term.)																													
185.1	581	Ly Cleveland (Un. Term.)																													
185.1	581	Ly Cleveland (Un. Term.)																													
185.1	581	Ly Cleveland (Un. Term.)																													
185.1	581	Ly Cleveland (Un. Term.)																													
185.1	581	Ly Cleveland (Un. Term.)																													
185.1	581	Ly Cleveland (Un. Term.)																													
185.1	581	Ly Cleveland (Un. Term.)																													
185.1	581	Ly Cleveland (Un. Term.)																													
185.1	581	Ly Cleveland (Un. Term.)																													
185.1	581	Ly Cleveland (Un. Term.)																													
185.1	581	Ly Cleveland (Un. Term.)																													
185.1	581	Ly Cleveland (Un. Term.)																													
185.1	581	Ly Cleveland (Un. Term.)																													
185.1	581	Ly Cleveland (Un. Term.)																													
185.1	581	Ly Cleveland (Un. Term.)																													
185.1	581	Ly Cleveland (Un. Term.)																													
185.1	581	Ly Cleveland (Un. Term.)																													
185.1	581	Ly Cleveland (Un. Term.)																													
185.1	581	Ly Cleveland (Un. Term.)																													
185.1	581	Ly Cleveland (Un. Term.)																													
185.1	581	Ly Cleveland (Un. Term.)																													
185.1	581	Ly Cleveland (Un. Term.)																													
185.1	581	Ly Cleveland (Un. Term.)																													
185.1	581	Ly Cleveland (Un. Term.)																													
185.1	581	Ly Cleveland (Un. Term.)																													
185.1	581	Ly Cleveland (Un. Term.)																													
185.1	581	Ly Cleveland (Un. Term.)																													
185.1	581	Ly Cleveland (Un. Term.)																													
185.1	581	Ly Cleveland (Un. Term.)																													
185.1	581	Ly Cleveland (Un. Term.)																													
185.1	581	Ly Cleveland (Un. Term.)																													
185.1	581	Ly Cleveland (Un. Term.)																													
185.1	581	Ly Cleveland (Un. Term.)																													
185.1	581	Ly Cleveland (Un. Term.)																													
185.1	581	Ly Cleveland (Un. Term.)																													
185.1	581	Ly Cleveland (Un. Term.)																													
185.1	581	Ly Cleveland (Un. Term.)																													
185.1	581	Ly Cleveland (Un. Term.)																													
185.1	581	Ly Cleveland (Un. Term.)																													
185.1	581	Ly Cleveland (Un. Term.)																													
185.1	581	Ly Cleveland (Un. Term.)																													
185.1	581	Ly Cleveland (Un. Term.)																													

**For Explanation of Reference Marks, see Page 3**

For Parlor, Sleeping and Dining Car Service, see Pages 15 to 22.

Table 20 Main Line—Chicago, Elkhart, Toledo and Cleveland to Buffalo

[illegible]

For Explanation of Reference Marks, See Page 3

For Parlor, Sleeping and Dining Car Service, See Pages 15 to 22



Table 21 Main Line—Niagara Falls, Buffalo, Rochester, Syracuse, Utica and Albany to New York

EAST AND SOUTH-BOUND		94 Ex. Sun.	74 Daily	154 Ex. Sun.	54 Ex. Sun.	168 Daily	24 Daily	468-68 Daily	68 Daily	70 Daily	123 Daily	138 Ex.Sun.	23 Daily	158 Daily	158 Daily	544 Ex.Sun.	58 Daily	160 Ex.Sun.	180 Sun. only	138 Daily	40 Daily	90 Daily	144 Daily	2 Daily	178 Sun. Only	78 Ex.Sun.	198 Sun. Only
Lv Niagara Falls.....		AM	AM	AM	AM	AM																					
" Buffalo (Cent. Term.) ..							3 07		3 28				5 56		6 45		8 30				AM 8 42	AM 8 42	PM	PM	PM	PM	PM
" Lancaster.....																					9 45	11 20					
Lv Wende.....												5 21															
" Crittenden.....												5 28															
" Corfu.....												5 38															
" West Batavia.....												5 48															
" Batavia.....												6 04	6 39		7 30		9 15				10 28	12 01					
Lv South Byron.....												6 17															
" West Bergen.....												6 24															
" Bergen.....												6 31															
" Churchville.....												6 38															
Lv Chili.....												6 45															
" Cold Water.....									4 43			6 53										11 02	12 36				
Lv Rochester.....									4 43			7 10	7 17		8 12		9 52				11 04	12 38					
Lv Rochester.....												7 25	7 17		8 22		9 54										
" East Rochester.....												7 42															
" Fairport.....												7 49															
Lv Walworth.....												8 17															
" Palmyra.....												8 27			8 58												
" East Palmyra.....												8 35															
" Newark.....												8 45	7 57														
Lv Lyons.....												8 55															
" Clyde.....												9 05															
" Savannah.....																											
" North Port Byron.....																											
Lv North Weedsport.....												9 27															
" Jordan.....												9 35															
" Memphis.....												9 42															
Lv Syracuse.....							5 42		6 07			10 00	8 49		10 23		11 32				12 30	2 03					
Lv Syracuse.....							5 47		6 14			6 40	8 55		10 35		11 40				12 36	2 06			1 40		
" East Syracuse.....												6 59			10 51												
" Minoa.....												7 06			10 57												
" North Chittenango.....												7 17															
" Sullivan.....																											
" Canastota.....												7 30				11 14											
" Westerlo.....																											
Lv Onondaga.....									6 49			7 45		9 31		11 24											
" Verona.....												7 51															
" Greenway.....												7 57															
Lv Rome.....									7 06			8 09	9 50		11 42	12 15											
" Oriskany.....												8 19				12 26											
" Whitesboro.....												8 25															
" Utica.....							6 47		7 22			8 32		10 07	11 59	12 35					1 36	3 05					
Lv Utica.....								5 16				9 28		10 16	12 10	12 49					1 00	3 07					
" North Ilion (Ilion).....							6 49	6 58	7 25			9 41									1 15						
" Herkimer (Mohawk-Ilion).....												9 46									1 26						
Lv Little Falls.....								6 03				9 56									1 52						
" St. Johnsville.....									7 25			10 10									2 29						
" Fort Plain.....												10 20									2 53						
" Ilatine Bridge (Canajoharie).....								6 32	7 48			10 27									3 00						
" Sprakers.....																											
" Fultonville.....								6 58	8 03			10 44									3 16						
Lv Tribes Hill.....								7 06				10 59	11 23		1 34						3 24						
" Amsterdam.....								7 24													3 37						
" Hoffman's.....									8 18			11 21	11 46		1 54						3 46						
" Schenectady.....								8 37	8 48			11 21	11 46		1 54						3 00	4 25					
Lv Albany.....							8 29	8 59	9 07			11 47	12 10		2 25						5 02	4 48					
Lv Troy.....								7 30				18 25	11 40														
Lv Albany.....								6 32				9 45	12 30		12 23												
" Castleton-on-Hudson.....							8 35	9 15	9 15			9 59									3 34	4 56					
" Schohack Landing.....												10 06															
Lv Stuyvesant.....								7 59				10 15															
" New York Hook (Cortlandt).....								7 08				10 21															
" Stockport.....												10 28															
" Hudson.....								7 21	8 47			10 39	1 03														
Lv Greendale (Catskill Station).....								7 29	8 55			10 57	1 11														
" Germantown.....								7 38				11 20	1 20														
" Tivoli.....								7 47	9 10			11 12	1 28														
" Barrytown.....								7 55	9 18				1 37														
Lv Rhinecliff (Kingston).....								8 04	9 27			11 27	1 46														
" Staatsburgh.....								8 13	9 36			11 36															
" Hyde Park.....								8 21	9 44			11 44															
" Poughkeepsie.....								8 30	9 53			11 53	2 18														
Lv Poughkeepsie.....								10 32	10 32			12 10	2 16														
Lv Poughkeepsie.....								10 32	10 32			12 10	2 16														
" New Hamburg.....								10 15				12 20	2 35														
" Chelsea.....								10 25				12 31	2 45														
" Beacon (Newburgh).....								10 31				12 37	2 51														
Lv Cold Spring.....								10 44				12 50	3 03														
" Garrison.....								10 54				1 08	3 14														
" Manhattan.....								10 58				1 15	3 20														
" Peekskill.....								11 04				1 20	3 30														
Lv Harmon.....								11 08				1 25	3 35														
" Ossining.....								11 12				1 30	3 40														
" Tarrytown.....								11 16				1 35	3 45														
" Yonkers.....								11 20				1 40	3 50														
" N.Y. (125th St.).....								11 24				1 45	4 00														
" N.Y. (G.C.T.).....								11 28</																			

**For Explanation of Reference Marks, See Page 3**

**For Parlor, Sleeping and Dining Car Service, See Pages 15 to 22**

Table 21 Main Line—Niagara Falls, Buffalo, Rochester, Syracuse, Utica and Albany to New York

[illegible]

**For Explanation of Reference Marks, See Page 3**

**For Parlor, Sleeping and Dining Car Service, See Pages 15 to 22**



Table 22 Elkhart and Toledo via Old Road									
Mls.	STATIONS	82 Daily				88 Daily			
		Ex. Sun.	Ex. Sun.	Ex. Sun.	Ex. Sun.	Ex. Sun.	Ex. Sun.	Ex. Sun.	Ex. Sun.
0.0	Chicago (Cent. Time)	1 50				3 10			
6.7	Englewood					3 23			
26.2	Gary					4 39			
58.9	LaPorte					5 55			
74.9	South Bend					7 11			
85.5	Mishawaka					8 27			
100.6	Elkhart					9 43			
	Old Road Nos.	52	18	38		614			
0.0	Elkhart	4 45	6 00			5 40			
8.3	Bristol		6 15			5 53			
18.8	White Pigeon	5 11	6 35			6 09			
24.9	Klinger Lake					6 23			
36.7	Sturgis	5 30				6 55			
43.5	Burr Oak	5 42				7 07			
54.2	Bronson	5 52				7 18			
60.6	Coldwater	6 12				7 38			
72.2	Quincy	6 23				7 49			
77.1	Allen	6 41				8 07			
82.5	Jonesville	6 55				8 21			
86.3	Hillsdale	7 06				8 32			
92.0	Osseo	7 12				8 38			
98.0	Pittsford	7 23				8 49			
100.6	Hudson	7 35				8 59			
112.2	Clayton	7 47				9 11			
116.0	Adrian	7 59				9 23			
120.2	Lenaue Junction	8 01				9 25			
124.2	Palmyra	8 11				9 35			
124.2	Billsfield	8 44				10 00			
124.2	Toledo (Cent. Time)	8 44				10 00			
124.2	Toledo (East. Time)	9 44				10 40			
0.0	Toledo (East. Time)	5 55				11 53			
46.8	Sandusky	10 55				11 43			
81.4	Elyria	11 43				12 28			
106.6	Cleveland	12 28				2 03			
163.2	Ashtabula	2 07				3 01			
204.0	Erie	3 01				3 46			
233.4	Westfield	3 46				4 30			
250.6	Dunkirk	5 12				5 39			
291.7	Buffalo (Cent. Term.)	5 12				5 39			
357.7	Rochester	8 40				7 17			
438.1	Syracuse	10 42				8 49			
490.9	Utica	12 36				10 07			
585.5	Albany	3 05				12 10			
727.7	New York (G. C. T.)	6 45				3 50			

Table 24														West Shore Railroad																																																																																																																																																																																																																																																																																																																																																																																																																																																																																																																																																																																																																																																																																																																																																							
(For Complete Service see Local West Shore R. R. Time Tables)																																																																																																																																																																																																																																																																																																																																																																																																																																																																																																																																																																																																																																																																																																																																																																					
STATIONS	9		17		11		1		7		15		9 <sup>5</sup>		13		8		23		4 <sup>19</sup>																																																																																																																																																																																																																																																																																																																																																																																																																																																																																																																																																																																																																																																																																																																																																

STATIONS	14	30	26		8	12	2	18	6											
	Ex.	Ex.	Daily		Ex.	Daily	Daily	Daily	Ex.											
	Sun.	Sun.	AM	AM	AM	PM	PM	PM	Mon.											
Lv Albany.....	4 35	.....	7 20		10 00	1 50	PM	20	5 40	1 00										
Lv Ravena.....	5 01	.....	7 47		10 34	2 24	PM	47	6 14	1 30										
Ar Catskill.....	5 30	.....	8 10		11 04	2 54	PM	10	6 48	.....										
" Saugerties.....	5 54	.....	8 26		11 24	3 16	PM	25	7 12	.....										
" Kingston.....	6 18	7 10	8 45		11 48	3 37	PM	42	7 35	2 25										
" Highland.....	7 01	7 39	9 08		12 26	4 10	PM	03	8 14	.....										
" Newburgh.....	7 38	8 14	9 32		12 58	4 38	PM	37	8 45	3 33										
" Cornwall.....	8 09	8 45	9 59		1 26	4 58	PM	47	9 15	3 53										
" West Point.....	7 57	8 35	9 52		1 16	4 58	PM	47	9 05	.....										
" Haverstraw.....	8 22	9 16	10 19		1 54	5 30	PM	12	9 42	.....										
" Weehawken.....	9 10	10 40	11 10		2 45	6 23	PM	8 00	10 35	4 55										
Ar N. Y. ft. W. 42d St.....	9 22	10 53	11 20		2 55	6 30	PM	8 10	10 45	5 10										
" N. Y. ft. Cortlandt St.....	9 40	11 15	11 43		3 15	6 55	PM	.....	.....	.....										

Equipment									
No. 3—Parlor Car Weehawken to Albany Fridays only.					No. 2—Parlor Car Albany to Weehawken Sunday only.				

Table 25												
Westfield and Chautauqua, N.Y.												
Via West Ridge Transportation Co.												
STATIONS	50 Daily				45-48 Ex. Sun.				1 Daily			
	AM	AM	AM	AM	AM	AM	AM	AM	AM	AM	AM	AM
Lv New York	11 40				12 05				9 00			
Lv Albany	11 50				12 15				9 10			
Lv Syracuse	12 00				12 25				9 20			
Auburn Road Nos.	1				5				11			
Lv Syracuse	5 55				10 00				5 10			
Lv Solway	6 04				10 11				5 18			
Lv Camillus	6 13				10 20				5 26			
Lv Martisico	6 22				10 30				5 34			
Lv Skaneateles Jct.	6 30				10 40				5 42			
Lv Auburn	6 38				10 50				5 50			
Lv Auburn Monroe St.	6 46				11 00				5 58			
Lv Cayuga	6 54				11 10				6 06			
Lv Seneca Falls	7 02				11 20				6 14			
Lv Waterloo	7 10				11 30				6 22			
Lv Geneva	7 18				11 40				6 30			
Lv Phelps	7 26				11 50				6 38			
Lv Phelps Junction	7 34				12 00				6 46			
Lv Skaneateles Jct.	7 42				12 10				6 54			
Lv Seneca Falls	7 50				12 20				7 02			
Lv Cayuga	7 58				12 30				7 10			
Lv Auburn Monroe St.	8 06				12 40				7 18			
Lv Auburn	8 14				12 50				7 26			
Lv Phelps Junction	8 22				13 00				7 34			
Lv Skaneateles Jct.	8 30				13 10				7 42			
Lv Seneca Falls	8 38				13 20				7 50			
Lv Cayuga	8 46				13 30				7 58			
Lv Auburn Monroe St.	8 54				13 40				8 06			
Lv Auburn	9 02				13 50				8 14			
Lv Phelps Junction	9 10				14 00				8 22			
Lv Skaneateles Jct.	9 18				14 10				8 30			
Lv Seneca Falls	9 26				14 20				8 38			
Lv Cayuga	9 34				14 30				8 46			
Lv Auburn Monroe St.	9 42				14 40				8 54			
Lv Auburn	9 50				14 50				9 02			
Lv Phelps Junction	9 58				15 00				9 10			
Lv Skaneateles Jct.	10 06				15 10				9 18			



Table 35 New York, Albany and Utica to Carthage, Watertown, Ogdensburg and Massena. Table with multiple columns for stations and times.

Table 36 Buffalo, Rochester and Syracuse to Watertown, Ogdensburg and Massena. Table with multiple columns for stations and times.

Table 37 New York and Oswego. Table with columns for stations and times.

Table 38 Utica and Oswego via Richland. Table with columns for stations and times.

For Explanation of Reference Marks, See Page 3

Table 46 Harlem Division New York—Chatham—Pittsfield—North Adams. Table with columns for stations and times.

EQUIPMENT. No. 5—Parlor Car New York to Chatham. Saturday only. No. 13—Parlor Car and Diner Lounge New York to Pittsfield.

Table 47 Ottawa Division. Table with columns for stations and times.

Table 48 Valley Branch. Table with columns for stations and times.

For Explanation of Reference Marks, See Page 3

Table 49 Detroit Branch. Table with columns for stations and times.

EQUIPMENT. No. 225-252—Restaurant Lounge Parlor Car Detroit to Cleveland. No. 227-80—Sleeping Cars Detroit to Cleveland and Columbus.

Table 50 Oil City Branch. Table with columns for stations and times.

Table 51 Alliance Branch. Table with columns for stations and times.

For Explanation of Reference Marks, See Page 3



Table 53 Ft. Wayne Branch									
Miles	STATIONS (Central Time)				STATIONS (Central Time)				
	48	49	50	51	52	53	54	55	
0.0	Lv JACKSON	6 45			Lv FT. WAYNE	4 10			
10.0	Lv Horton	7 05			Lv New Era	4 35			
15.0	Lv Mosherville	7 19			Lv Auburn	4 45			
20.0	Lv Jonesville	7 33			Lv Waterloo	5 05			
25.0	Lv Hillsdale	7 50			Lv Summit	5 13			
30.0	Lv Hillsdale	7 50			Lv Steubenville	5 22			
35.0	Lv Banks	7 50			Lv Pleasant Lake	5 31			
40.0	Lv Reading	8 15			Lv Angola	5 45			
45.0	Lv Montgomery	8 31			Lv Fremont	5 50			
50.0	Lv Ray	8 31			Lv Ray	5 50			
55.0	Lv Fremont	8 38			Lv Montgomery	5 57			
60.0	Lv Angola	8 50			Lv Reading	6 05			
65.0	Lv Pleasant Lake	8 59			Lv Banks	6 12			
70.0	Lv Steubenville	9 07			Lv Hillsdale	6 30			
75.0	Lv Waterloo	9 20			Lv Jonesville	6 41			
80.0	Lv Waterloo	9 25			Lv Mosherville	6 49			
85.0	Lv Auburn	9 33			Lv Hanover	6 57			
90.0	Lv New Era	9 43			Lv Horton	7 05			
95.0	Lv FT. WAYNE	10 10			Lv JACKSON	7 30			

Table 54 Grand Rapids Branch									
Miles	STATIONS (Central Time)				STATIONS (Central Time)				
	21	22	23	24	25	26	27	28	
0.0	Lv GRAND RAPIDS	1 30			Lv CHICAGO	1 50			
11.9	Lv Byron Center	1 50			Lv Elkhardt	6 00			
17.8	Lv Dorr	2 00			Lv Bristol	6 15			
21.5	Lv Hillsdale	2 06			Lv Vistula	6 25			
25.1	Lv Hopkins	2 14			Lv White Pigeon	6 35			
28.6	Lv Allegan	2 28			Lv Constantine	6 37			
32.4	Lv Otsego	2 38			Lv Three Rivers	6 45			
36.1	Lv Plainwell	2 57			Lv Moorepark	6 59			
40.0	Lv Kalamazoo (M.C.Sta.)	3 20			Lv Kalamazoo (M.C.Sta.)	7 10			
43.9	Lv Kalamazoo (M.C.Sta.)	3 35			Lv Portage	7 22			
47.8	Lv Schoolcraft	3 52			Lv Schoolcraft	7 33			
51.7	Lv Portage	4 04			Lv Kalamazoo (M.C.Sta.)	7 45			
55.6	Lv Hillsdale	4 17			Lv Kalamazoo (M.C.Sta.)	8 05			
59.5	Lv Three Rivers	4 30			Lv Plainwell	8 25			
63.4	Lv Constantine	4 44			Lv Otsego	8 35			
67.3	Lv White Pigeon	4 53			Lv Allegan	8 52			
71.2	Lv White Pigeon	5 05			Lv Hopkins	9 03			
75.1	Lv Vistula	5 15			Lv Hillsdale	9 10			
79.0	Lv Bristol	5 25			Lv Dorr	9 28			
82.9	Lv Elkhardt	5 35			Lv Byron Center	9 35			
86.8	Lv CHICAGO	5 50			Lv GRAND RAPIDS	9 55			

Table 55 Monroe Branch											
101 Mon. Wed. & Fri.	Mis.	STATIONS (Central Time)				102 Mon. Wed. & Fri.	Mis.	STATIONS (Central Time)			
AM						PM					
11 50		Lv Detroit (M.C.Term.) (E.T.)	Ar			12 55		Lv Detroit (M.C.Term.) (E.T.)	Ar		
10 50	0.0	Lv Detroit (M.C.Term.) (C.T.)	Ar			10 30		Lv Detroit (M.C.Term.) (C.T.)	Ar		
11 40	33.9	Lv Monroe	Ar			11 35		Lv Monroe	Ar		
12 05	35.7	Lv Ida	Ar			10 30		Lv Ida	Ar		
12 27	37.4	Lv Petersburg	Ar			9 45		Lv Petersburg	Ar		
12 49	39.1	Lv Deerfield	Ar			9 31		Lv Deerfield	Ar		
1 10	63.1	Lv Lenawee Junction	Ar			9 01		Lv Lenawee Junction	Ar		
1 15	67.1	Lv Adrian	Ar			8 45		Lv Adrian	Ar		

Table 56 Fayette Branch									
108 Tues. Thurs. Sat.		Miles	STATIONS (Central Time)				109 Tues. Thurs. Sat.		Miles
AM									
8 30	0.0		Lv	ADRIAN	Ar		2 30		
8 40	4.2		Lv	Lenawee Junction	Ar		2 15		
Mixed			Lv	Ogden	Ar		2 00		
9 15	12.1		"	Jasper	Ar		1 45		
9 30	15.5		"	Weston	Ar		1 30		
9 50	19.2		"	Morenci	Ar		1 15		
10 15	25.8		Ar	FAYETTE	Lv		11 30		
10 40	32.5						11 55		

Table 59 Ypsilanti Branch									
Miles	STATIONS (Central Time)				STATIONS (Central Time)				
	48	49	50	51	52	53	54	55	
0.0	Lv HILLSDALE	Ar			Lv HILLSDALE	Ar			
7.5	Lv North Adams	Ar			Lv North Adams	Ar			
12.3	Lv Jerome	Ar			Lv Jerome	Ar			
17.6	Lv Somerset	Ar			Lv Somerset	Ar			
20.4	Lv Cement City	Ar			Lv Cement City	Ar			
25.4	Lv Brooklyn	Ar			Lv Brooklyn	Ar			
31.9	Lv Watkins	Ar			Lv Watkins	Ar			
35.7	Lv Manchester	Ar			Lv Manchester	Ar			
43.8	Lv Bridgewater	Ar			Lv Bridgewater	Ar			
50.0	Lv Saline	Ar			Lv Saline	Ar			
61.1	Lv YPSILANTI	Ar			Lv YPSILANTI	Ar			

**New York Central Building**  
—gateway to a whole continent of business!

Connected by direct passage-way to Grand Central terminal, the *New York Central Building* towers 35 stories above smart Park Avenue, and the hub of Metropolitan business activity. Its advantages of convenience and prestige have attracted a long list of notable tenants. Space is now available for executive, general and personal offices in small or large units. Renting office, Room 1525.

**New York Central Building**  
230 Park Avenue, 45th and 46th Streets, New York

Table 64 Chicago—Danville—Evansville—Cairo									
Miles	STATIONS (Central Time)				STATIONS (Central Time)				
	310-31	32	33	34	35	36	37	38	
0.0	Lv New York Central	10 45			Lv Big Four Route	6 30			
6.7	Lv CHICAGO	10 58			Lv Harrisburg	9 15			
11.8	Lv South Chicago	11 11			Lv Eldorado	9 28			
16.8	Lv Whiting	11 11			Lv Carmi	10 19			
19.4	Lv Indiana Harbor	11 16			Lv Grayville	10 28			
20.5	Lv Michigan Ave.	11 16			Lv Evansville	10 05			
21.4	Lv Calumet	11 16			Lv Mt. Carmel	11 30			
22.2	Lv Grasselli	11 16			Lv Lawrenceville	12 01			
23.4	Lv Gibson	11 16			Lv Robinson	12 28			
25.3	Lv Cook	11 16			Lv Marshall	12 08			
25.5	Lv North Hayden	11 16			Lv Paris	12 15			
27.2	Lv Belshaw	11 16			Lv Danville	12 20			
28.0	Lv Schneider	11 16			Lv New York Central	12 20			
28.7	Lv Enos	11 16			Lv Danville	12 20			
29.4	Lv Enos	11 16			Lv Sloan	12 32			
30.1	Lv Enos	11 16			Lv Stewart	12 40			
30.8	Lv Enos	11 16			Lv Tab	12 45			
31.5	Lv Enos	11 16			Lv Handy	12 50			
32.2	Lv Enos	11 16			Lv Dunn	12 55			
32.9	Lv Enos	11 16			Lv Free	12 55			
33.6	Lv Enos	11 16			Lv Sheff	12 55			
34.3	Lv Enos	11 16			Lv Kentland	12 55			
35.0	Lv Enos	11 16			Lv Ade	12 55			
35.7	Lv Enos	11 16			Lv Moroco	12 55			
36.4	Lv Enos	11 16			Lv Enos	12 55			
37.1	Lv Enos	11 16			Lv Enos	12 55			
37.8	Lv Enos	11 16			Lv Enos	12 55			
38.5	Lv Enos	11 16			Lv Enos	12 55			
39.2	Lv Enos	11 16			Lv Enos	12 55			
39.9	Lv Enos	11 16			Lv Enos	12 55			

No. 310-31—Sleeping Cars Chicago to Evansville and Cairo.  
No. 46-463—Sleeping Cars Cairo to Evansville and Chicago.

Table 65 South Bend—Kankakee									
Miles	STATIONS (Central Time)				STATIONS (Central Time)				
	1	2	3	4	5	6	7	8	
0.0	Lv SOUTH BEND	4 30			Lv SOUTH BEND	4 30			
7.2	Lv North Liberty	4 35			Lv North Liberty	4 35			
13.6	Lv Walkerton	4 50			Lv Walkerton	4 50			
19.6	Lv Hamlet	5 05			Lv Hamlet	5 05			
27.6	Lv Knox	5 20			Lv Knox	5 20			
33.9	Lv North Judson	5 35			Lv North Judson	5 35			
43.3	Lv San Pierre	5 50			Lv San Pierre	5 50			
49.5	Lv Teft	6 05			Lv Teft	6 05			
58.1	Lv Wheatfield	6 20			Lv Wheatfield	6 20			
63.5	Lv Kersey	6 35			Lv Kersey	6 35			
65.6	Lv Demotte	6 40			Lv Demotte	6 40			
73.4	Lv Shelby	6 55			Lv Shelby	6 55			
78.4	Lv Schneider	7 10			Lv Schneider	7 10			
82.7	Lv Illinois	7 25			Lv Illinois	7 25			
90.1	Lv Momence	7 40			Lv Momence	7 40			
101.4	Lv Kankakee	8 10			Lv Kankakee	8 10			

## Tuesdays and Saturdays Are Bargain Days

Low round trip fares from New York to Cleveland, Detroit and practically all stations west, including Chicago, Cincinnati and St. Louis.

Also from Cleveland, Detroit and practically all stations west, including Chicago, Cincinnati and St. Louis to New York, Boston, Montreal, Portland, and other Atlantic Seaboard points.

**GO ANY TUESDAY or SATURDAY RETURN WITHIN 30 DAYS**

Table 70 Detroit, Toledo, Columbus, Charleston and Norfolk									
Miles	STATIONS				STATIONS				
	2	3	4	5	6	7	8	9	
0.0	Lv DETROIT (M.C.Term.) (E.T.)	1 10			Lv DETROIT (M.C.Term.) (E.T.)	1 10			
10.0	Lv Detroit, P.M. Ry. (E.T.)	1 10			Lv Detroit, P.M. Ry. (E.T.)	1 10			
11.0	Lv CHICAGO (N.Y.C.) (E.T.)	8 00			Lv CHICAGO (N.Y.C.) (E.T.)	8 00			
12.0	Lv Toledo (E.T.)	8 30			Lv Toledo (E.T.)	8 30			
13.0	Lv Lima City	8 40			Lv Lima City	8 40			
14.0	Lv Dunbridge	8 50			Lv Dunbridge	8 50			
15.0	Lv Sugar Ridge	9 00			Lv Sugar Ridge	9 00			
16.0	Lv Bowling Green	9 10			Lv Bowling Green	9 10			
17.0	Lv Portage	9 20			Lv Portage	9 20			
18.0	Lv Cygnat	9 30			Lv Cygnat	9 30			
19.0	Lv Galatea (N.Baltimore)	9 40			Lv Galatea (N.Baltimore)	9 40			
20.0	Lv Mortimer	9 50			Lv Mortimer	9 50			
21.0	Lv Findlay	10 00			Lv Findlay	10 00			
22.0	Lv Arlington	10 10			Lv Arlington	10 10			
23.0	Lv Williamstown	10 20			Lv Williamstown	10 20			
24.0	Lv Dunkirk	10 30			Lv Dunkirk	10 30			
25.0	Lv Kenton	10 40			Lv Kenton	10 40			
26.0	Lv Ridgeway	10 50			Lv Ridgeway	10 50			
27.0	Lv West Mansfield	11 00			Lv West Mansfield	11 00			
28.0	Lv Raymond	11 10			Lv Raymond	11 10			
29.0	Lv Peoria	11 20			Lv Peoria	11 20			
30.0	Lv Marysville	11 30			Lv Marysville	11 30			
31.0	Lv Columbus (Union Sta.)	11 40			Lv Columbus (Union Sta.)	11 40			



## Important Notice

The 20th Century Limited and other New York Central passenger trains are frequently operated in two or more sections. It is therefore necessary that friends who expect to wire you en route, or meet you at stations, should know the number of your Pullman Car as well as the number or name of your train.

### Special Service Charges on Trains Nos. 25 & 26 "Twentieth Century Limited"

WESTBOUND			EASTBOUND			
From	To		To	From		
	Elkhart	Chicago		Chicago	Elkhart	Toledo
New York....	\$8.95	\$10.00	Albany....	\$8.55	\$7.50	\$6.25
Harmon....	8.60	9.70	Pittsfield..	9.25	8.25	6.85
Boston.....	8.95	10.00	Springfield..	9.25	8.25	6.85
Worcester....	8.95	10.00	Worcester..	10.00	8.95	7.55
Springfield...	8.25	9.25	Boston.....	10.00	8.95	7.70
Pittsfield....	8.25	9.25	Harmon....	9.70	8.60	7.25
Albany.....	7.50	8.55	New York..	10.00	8.95	7.60
Syracuse.....	5.95	7.00				
Buffalo.....	4.40	5.45				

### Limited Train Features

Special service features are provided on limited trains as follows:

Nos. 25 and 26—**Twentieth Century Limited.**

*Club Car*—Barber, Bath, Secretary, Dictaphone, Valet, Stock Reports, Sporting Events, Magazines, Newspapers, Stationery.

*Observation Car*—Maid, Telephone at Terminals, Lounge, Magazines, Newspapers, Stationery.

Nos. 11 and 12—**Southwestern Limited.**

*Club Car*—Valet, Stock Reports, Newspapers, Magazines, Stationery.

*Observation Car*—Telephone at Terminals, Lounge, Magazines, Newspapers, Stationery.

All club cars on the N.Y.C. Lines carry a current copy of the Official Ry. Guide.

### Western Union Telegrams

Telegrams, cablegrams, day and night letters accepted in all telegraph offices in railway stations along the New York Central Lines for transmission via Western Union. Fifty-word night letters for delivery the following morning to any part of the United States at the rate of a ten-word day message.

### National Travelers Aid Society

Representatives of National Travelers Aid Society are at many of the larger stations for purposes of relief of distress and assistance of unprotected. Those in need of such service should inquire of the station force for a National Travelers Aid Society representative.

### Check Baggage Direct

Passengers are urged to check their baggage through to house address, hotel, steamship, dock, etc., at destination, thus insuring prompt delivery and avoiding necessity for any further attention on their part. Reliable transfer companies perform the service at nominal rates. Charges may be paid at starting point or after receipt of baggage at destination address. This delivery arrangement is in effect at all of the larger cities along the New York Central Lines.

### Street Car and Bus Service at Terrace Station, Buffalo

Passengers arriving at Terrace Station, Buffalo, from Niagara Falls and points on the Michigan Central Railroad will find convenient street car and bus service nearby for all sections of Buffalo, or connecting railroad and steamship terminals. Consult City Map posted at Station.

### Bus Service to and from Central Terminal, Buffalo

Frequent bus service is provided to and from New York Central Terminal at Buffalo and the hotels and downtown district. Fare ten cents. Free transfers between all local buses and street car lines. Buses arrive at and leave from the Upper Level of Central Terminal. No stairs to climb.

# New York Central Service to Travelers in Foreign Lands

**Cable Address—Nycentral—New York**

Wherever there is an American Express foreign office, travelers will find New York Central service:

At the seaport docks, at the principal railroad depots and at many frontier points, American Express uniformed interpreters are stationed to aid the Company's patrons.

At American Express offices are available travel, financial and traffic services of a scope to meet every requirement of the traveler on his journey to strange lands—

An office which he can use as his headquarters.

An address to receive his letters, cables and wireless messages.

A Travel Bureau where he can secure his railroad, airplane, steamship and motor transportation.

A financial department for purchasing or cashing Travelers Cheques and Letters of Credit and exchanging foreign money and receiving and transmitting funds.

A freight department staffed with men familiar with customs requirements and the laws of the various countries in connection with the movement of freight shipments—where arrangements can be made for transportation and transshipment abroad, ocean bookings, the issuance of through bills of lading and customs clearance at ports of entry.

The American Express Company are general foreign agents for the New York Central, and our patrons are invited to avail themselves of these services.

*Arrangements for New York Central transportation and Pullman reservations for your trip home from New York or Boston can be made at American Express foreign offices.*

## American Express Offices FOREIGN COUNTRIES

**GREAT BRITAIN**  
London—6 Haymarket, S. W. 1  
Liverpool—India Bldgs., Water Street  
Southampton—25 Oxford St.  
Glasgow—115 Hope St. (W. A. Williamson, Ltd.)  
Edinburgh—10 Frederick St. (W. A. Williamson, Ltd.)  
Dublin—Irish Free State, 116 Grafton Street

**FRANCE**  
Paris—11 Rue Scribe  
Havre—2 Place Jules Ferry  
Marseilles—13 La Canebiere  
Nice—2 Rue du Congres  
Cannes—6 bis, Rue des Belges  
Monte Carlo, Monaco—Avenue de Monte Carlo

**SWITZERLAND**  
Lucerne—6 Lowenstrasse  
Zurich—3 Slihopfstrasse  
Basle—5 Marktgasse  
Interlaken—33 Hoheweg  
Montreux—83 Grand Rue  
Lugano—Qual Vincenzo Vela 8  
Geneva—7 Rue du Mont Blanc

**ITALY**  
Rome—38 Piazza di Spagna  
Naples—23 Piazza del Martiri  
Genoa—Via Balbi (Hotel Colombia)  
Milan—6 Via Giuseppe Verdi  
Florence—2 & 4 Via Tornabuoni  
Venice—Riva degli Schiavoni 4200/1  
\*Palermo, Sicily—Via Ingham 67  
\*Taormina, Sicily—Corso Umberto 131

**BELGIUM**  
Antwerp—87 Place de Meir  
Brussels—16 Blvd. du Jardin Botanique

**DENMARK**  
Copenhagen—23 Amagertorv

\*Season office

**GERMANY**  
Berlin—3 Unter den Linden  
Hamburg—16-18 Alsterdamm  
Bremen—32 Bahnhofstrasse  
Munich—14 Maximiliansplatz  
\*Heidelberg—3 Rohrbacherstrasse

**AUSTRIA**  
Vienna—14 Karntnerring

**HOLLAND**  
Amsterdam—88, 90 Rokin  
Rotterdam—111 Coolingsingel  
The Hague—Plaats 31

**GREECE**  
Athens—23-a Stadium St.  
Constitution Square  
Piraeus—42 Philonos St.

**EGYPT**  
\*Assuan—Grand Hotel  
\*Cairo—Continental Savoy Buildings  
\*Luxor—Winter Palace Hotel

**PALESTINE**  
Jerusalem—Jaffa Road

**INDIA**  
Calcutta—14 Government Place East  
Bombay—82-84 Esplanade Road, Fort  
Colombo, Ceylon—Church Street

**STRAITS SETTLEMENTS**  
Singapore—1 Collyer Quay

**CHINA**  
Hongkong—4 Des Voeux Road, Central  
Shanghai—158 Klukiang Road  
Tientsin—137 Victoria Road  
Peking (Peking)—Wagon-Lits Hotel

**JAPAN**  
Yokohama—7 Nihon Odori, Nakaku  
**PHILIPPINE ISLANDS**  
Manila—95 Plaza Moraga

## Information

**Standard Time.**—The time given herein is Eastern Standard Time at all points Toledo, Cincinnati and east and Central Standard Time, which is one hour slower, at all points west of Toledo, except time on Big Four Route, west of Bellefontaine is Central Standard Time. The time between 12:01 o'clock midnight and 12:00 o'clock noon is indicated by light face type; **between 12.01 o'clock noon and 12.00 o'clock midnight by dark face type.**

**Regarding Time Tables.**—This Railroad is not responsible for errors in time tables, inconvenience or damage resulting from delayed trains or failure to make connections; schedules herein are subject to change without notice.

**Buy Tickets** before boarding trains and avoid payment of extra charge.

**Children** under 5 years of age carried free, when accompanied by parent or guardian; 5 years of age and under 12, one-half fare; 12 years of age or over, full fare.

**Adjustment of Fares.**—In case of dispute with Conductors or Agents pay fare required, take receipt and communicate with I. M. Taylor, Assistant General Passenger Agent, New York, N. Y.

**Redemption of Tickets.**—Tickets unused or partly used, will be redeemed under tariff regulations at proper value.

**Baggage Maximums.**—No single piece of baggage exceeding 300 pounds in weight or 72 inches in greatest dimension, or single shipment exceeding \$2500.00 in value will be checked. Free allowance subject to tariff stipulations as to contents, weight, value and size.

**Baggage Liability Limited.**—Excess value to be declared and paid for at time of checking.

**Dogs** and small household pets, such as cats, birds, etc., will be handled in baggage service subject to tariff regulations. Small dogs or cats in closed receptacles may be carried in coaches with passengers, if desired.

**Baggage.**—This Railroad cannot guarantee to forward baggage on same train with passenger, and when necessary, baggage of passengers will be forwarded on other trains. To facilitate prompt receipt of their baggage at destination passengers are advised to arrange for forwarding on a preceding train.

**Insure Your Baggage and Personal Effects.**—A new form of policy of the St. Paul Fire & Marine Insurance Company, insuring your baggage and personal effects from the beginning to the end of a journey anywhere in the world, may be purchased at principal offices of the New York Central Lines. The coverage is very liberal and the rates are low. Minimum premium twenty-five cents. Ask Ticket Agents for full particulars.

**Lost Articles.**—When articles are lost on trains, or left in waiting rooms at station, owners should apply at once to Agent at station where they leave the train.

**Club and Lounge Cars.**—Club and Lounge Cars are operated primarily for accommodation of passengers occupying space in sleeping or parlor cars.

## New York Central Representatives in Mexico and Cuba

Wells Fargo & Company, S. A., have been appointed General Agents for the New York Central Lines in Mexico and Cuba with offices in the cities listed below.

These offices are equipped to give New York Central patrons complete information regarding travel in those countries; make hotel and sleeping car reservations; attend to exchange of foreign money and shipping of curios and arrange personally conducted or unescorted tours.

Mail may be sent in care of these offices to be held until called for or forwarded.

At the border offices at Laredo, Texas and Nogales, Arizona and the maritime ports, Tampico and Vera Cruz, the Company's agents are equipped to render great assistance to travelers in connection with the various customs formalities.

## Wells Fargo & Co., S. A. General Agents in Mexico and Cuba

**MEXICO**  
Mexico City  
Ave. Madero, 14  
Hotel Regis  
Monterrey, N. L.  
Zaragoza 1037 Sur.  
Laredo, Tex.  
Pachuca, Hgo.  
Puebla, Pue.  
Tampico, Tamps.  
Vera Cruz, Ver.

Guadalajara, Jal.  
Ave. de Los Heros No. 173  
Culiacan, Sin.  
Hermosillo, Son.  
Guaymas, Son.  
Mazatlan, Sin.  
Nogales, Son.  
Tepic, Nay.  
San Blas, Sin.

**CUBA**  
Havana  
Paseo de Marti 118  
Camaguey, Cam.  
Martires, No. 28  
Ciego de Aviles, Cam.

Guantanamo, Ote.  
Moron, Cam.  
Nuevitas, Cam.  
Santa Clara, S. C.  
Santiago, Ote.

### Discontinuance of Extra Fares

All extra fares on trains of the New York Central Lines have been discontinued excepting the special service charge on the Twentieth Century Limited.

### Stop Over at Niagara Falls

Passengers traveling via New York Central Lines are given an opportunity to stop over at Niagara Falls within final limit of ticket.

### Free Side Trip to Niagara Falls

Ticket for a trip to Niagara Falls and return will be furnished without charge upon application to depot ticket agent, Central Terminal, Buffalo, to passengers holding first class tickets reading through Buffalo via New York Central Lines. This privilege is accorded only to passengers holding tickets from Cleveland, O., Youngstown, O., St. Thomas, Ont., and stations beyond to Rochester, N. Y., and stations beyond or vice versa.

### Stop Overs at Other Points

A stop over within final limit of ticket will be granted passenger at any station enroute on the New York Central Lines.

### Special Arrangements for Organized Parties

Members of organizations or organized parties contemplating trips will find it greatly to their interest to consult any representative of the New York Central Lines, who will be pleased to quote fares and make all arrangements for the trip.

### SEE ALL THE AMERICAS

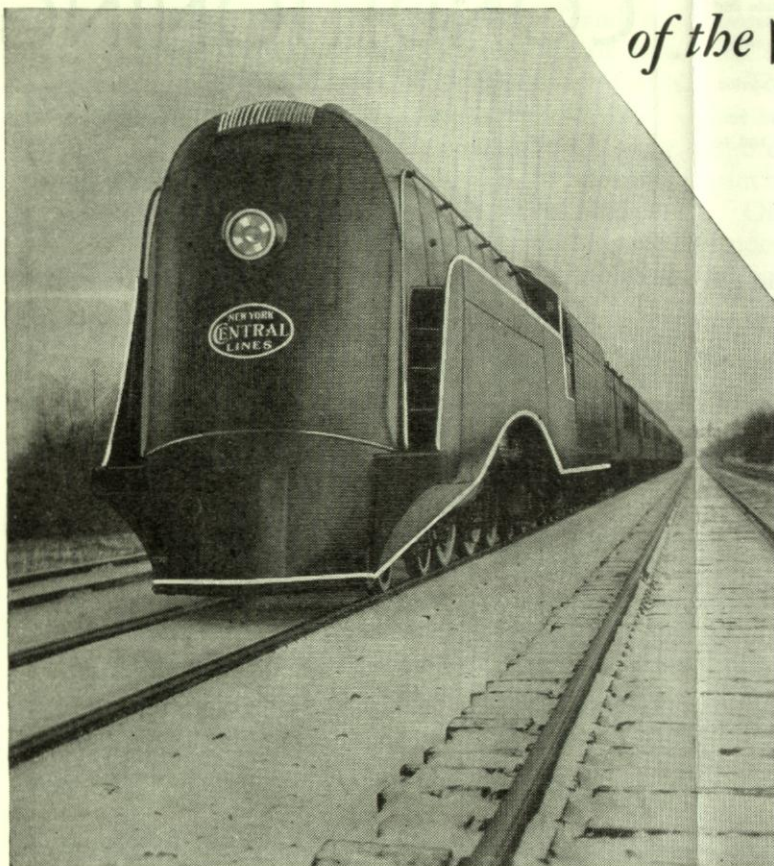
Inquire about Rail-Water Trips to and from California, through the Panama Canal and Spanish Americas—One-Way Rail, One-Way Water. Liberal stopover privileges at Commercial Centers and Resorts. Also rail and water or all-rail all-expense tours to Mexico.

## The Water Level Route

## You Can Sleep



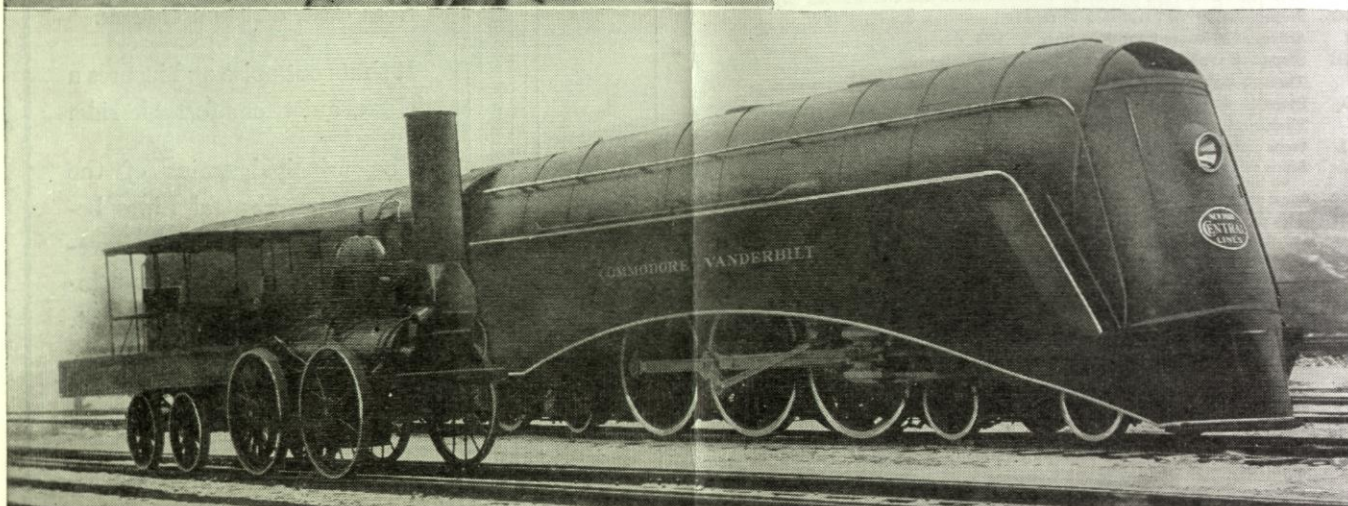
# THE NEW *Streamlined* LOCOMOTIVE of the NEW YORK CENTRAL



**T**HIS pioneer creation, recently completed, is the world's first streamlined high-powered steam locomotive and is designed for use on high-speed passenger trains such as the 20th Century Limited.

It is of the famous Hudson type, developing 4,075 horsepower and, being scientifically streamlined, the head air resistance is cut 35% at speeds of from 70 to 90 miles per hour, with a consequent reduction in fuel consumption.

It marks an epochal advance in the design of powerful steam locomotives, whose possibilities in safe, reliable and high-speed operation have been by no means exhausted.



The Water Level Route ~ You Can Sleep