

354 Recty

CONCESSION ROAD.

CONCESSION IX

PT. N.W. 1/4 N. 24

DEED N. 110

111-208
N.W. P. N. 23

DEED N. 109

NE 1/4 N. 23.

DEED N. 110
112-208

N.W. P. N. 24.

DEED N. 112
~~112-208~~
113-208
114-207
115-208

112-208
NE 1/4 N. 24.

DEED N. 114-108-2170

Townsend Sta.
2221+00

NORFOLK CO.
TOWNSEND TP.

POCKET 1 FOLDER 3
CASE B

V.S. 4611 - L.C. 5104

(C.S.R.R.) MAIN LINE. N. 1.

Scale 100' = 1" 5093

35480611

CONCESSION ROAD

CONCESSION IX

Ex. 1 3273+60

N.F. 62
3272+60.2

101-13176

102-13175

103-13174

104-13173

109-207

N.W. 1/4 N. 21

DEED No 705

104-208

N.E. 1/4 N. 21

DEED No 706 & 711

100-209

N. 1/2 N. 22

DEED No 107

111-208

N.W. 1/4 N. 23

DEED No 109

NORFOLK CO.
TOWNSEND TP.

POCKET 1 FOLDER 3
CASE B

V.S. 4611 - L.C. 5104

(C.S.R.R.) MAIN LINE No 2.

Platted O.S. April 28, 1906.
Traced by H.C. Jany 30, 1907.

Scale 100' = 1" 5004

354K0617

CONCESSION ROAD.

CONCESSION IX

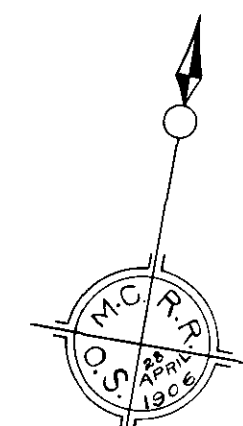
N.F. 63
3325 + 45

NPT N^o 19.

N.W. $\frac{1}{4}$ N^o 20.

N.E. $\frac{1}{4}$ N^o 20

N.W. $\frac{1}{4}$ N^o 21



**NORFOLK CO.
TOWNSEND TP**

POCKET FOLDING 3
CASE B

V.S. 4611 - L.C. 5104

(C.S.R.R.) MAIN LINE. No 3.

Sec. 25

Scale 100' = 1"

5095

3540624

CONCESSION ROAD

CONCESSION IX

Sec 44 45 Sec.

Creek

VILLA NOVA

ROAD

SIDE

N^o 17

Decd #106

N.P.T. N^o 18

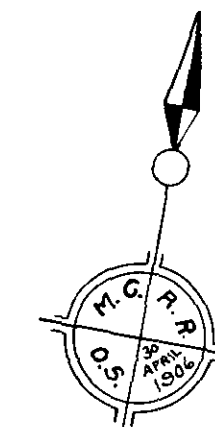
Lead #106

N.P.T. N^o 19

Decd #106

106-7206

See Con. Book 26 page 9



NORFOLK C^o
TOWNSEND T^p

POCKET 1 FOURTH 3
CASE B

Sections 44-45

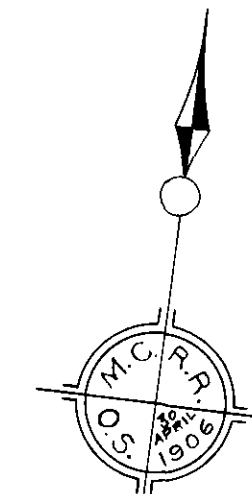
CONCESSION ROAD

CONCESSION IX

N.F. 64
3378 + 19.3

102-206
101-209
Nº 16.

102-211
Nº 17.



NORFOLK CO.
TOWNSEND TP.

POCKET 1 FOLDER 3
CASE B

5540637

CONCESSION ROAD

CONCESSION IX

N.F. 65
3430 + 893

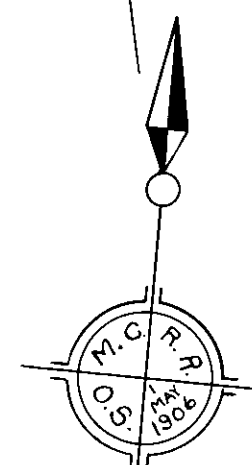
5540637

W. $\frac{1}{2}$ N. 14

E. $\frac{1}{2}$ N. 14

N. 15

NORFOLK C.
TOWNSEND T.



POCKET 1 FOLDER 3
CASE B

V.S. 4611 - L.C. 5104

(C.S.R.R.) MAIN LINE. N. 6.

Scale 100' = 1"

5098

354R0644

CONCESSION

ROAD

CONCESSION IX

TOWNSEND
CENTER

STATION

SIDE
ROAD

Townsend Center Station
34.57 + 45.1

W.P. NPTN #13.

NPTN #13.

W. 1/2 N. #14.

N. #12

Please See Cont. Book 25 p. 104, 1" = 100'

NORFOLK C.
TOWNSEND T.P.

POCKET 1 FOLDER 3
CASE B

V.S. 4611 - L.C. 5104

(C.S.R.R.) MAIN LINE. No 7.

Scale 100' = 1"
5099

100'-1

3510658

CONCESSION VIII

PTS. N. 10

81 58

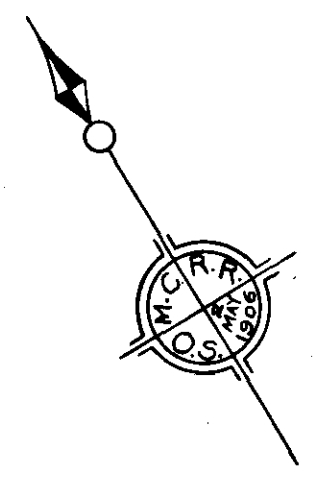
2611400
3130
51400
5280
4820

PT. N. 9

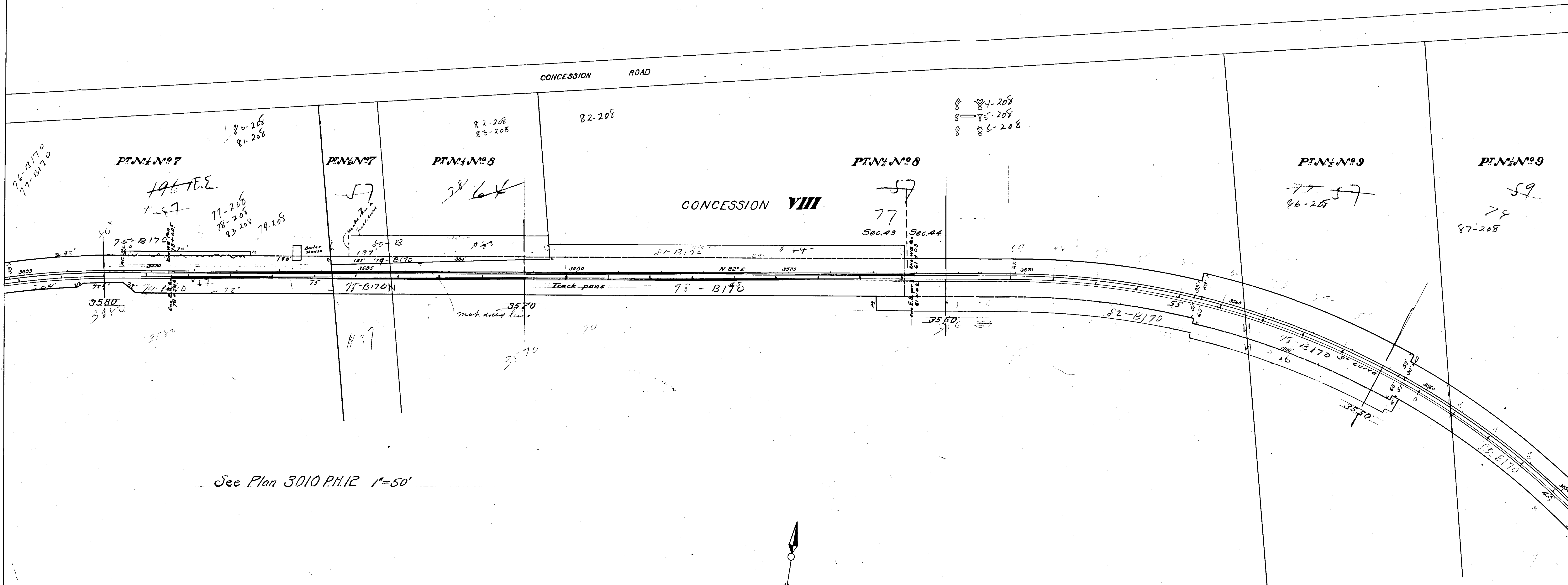
29 59

89-208
90-208
S. PT. N. 10
856

NORFOLK CO.
TOWNSEND T.



254R0664



See Plan 3010 P.H. 12 1"=50'

NORFOLK CO.
TOWNSEND T.

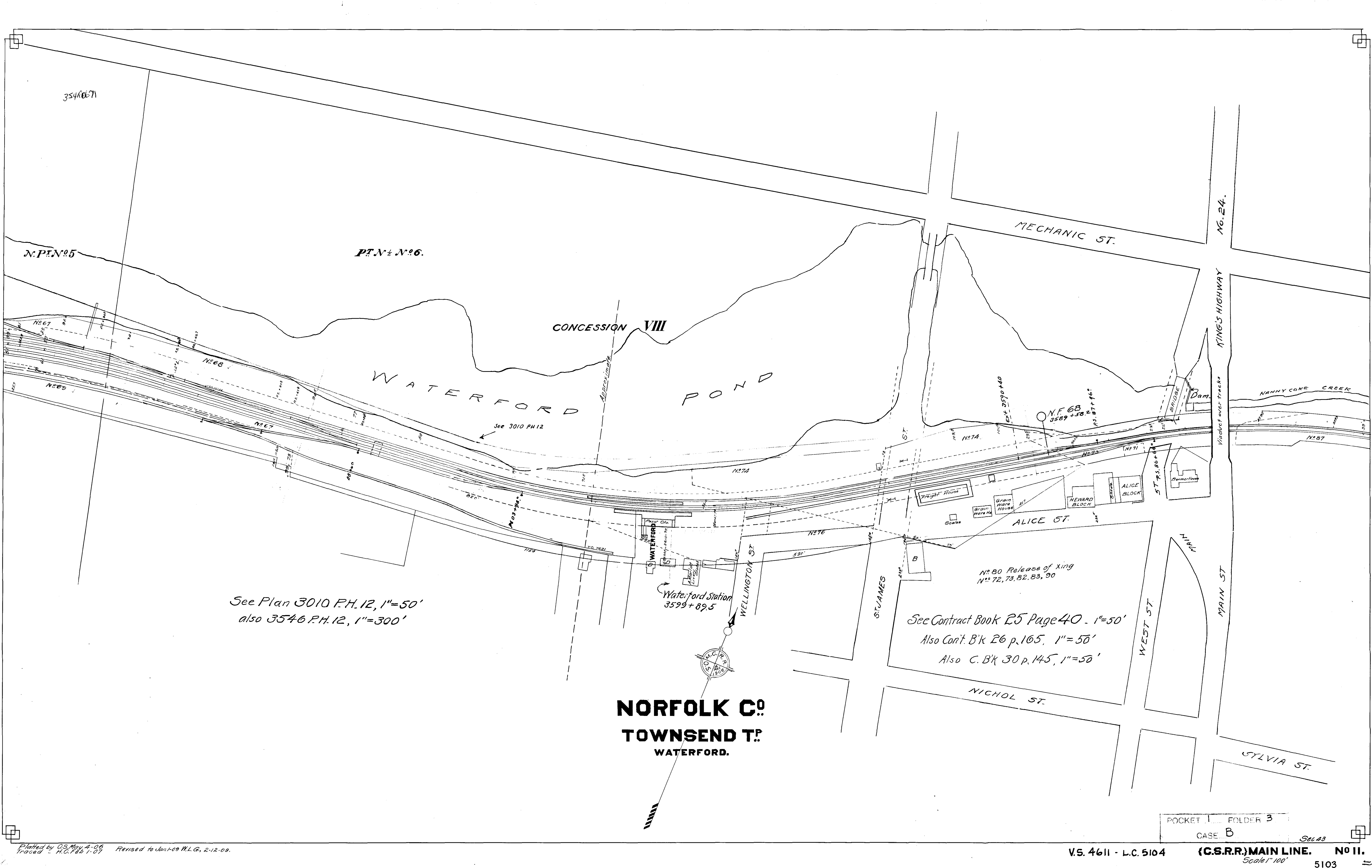
POCKET 1 FOLDER 3
CASE B

V.S. 4611 - L.C. 5104

(C.S.R.R.) MAIN LINE. N°10.

Scale 100' = 1"

Plotted A.S. May 3, 1906.
Traced A.L. Feb. 1, 1907.



3546671

N.P.N. 5

P.N. 6

CONCESSION VIII

WATERFORD POND

See 3010 P.H. 12

See Plan 3010 P.H. 12, 1"=50'
also 3546 P.H. 12, 1"=300'

NORFOLK CO.
TOWNSEND T.
WATERFORD.

See Contract Book 25 Page 40 - 1"=50'
Also Cont. B'k 26 p. 105, 1"=50'
Also C. B'k 30 p. 145, 1"=50'

POCKET 1 FOLDER 3
CASE B

3540678

CONCESSION ROAD

N.PEN#5.
373 7/12

PT.N#6.

320 16 1/2

Tracts 64-B169 and 65-B169
Convey to the Ry. Co. lands between the R.R.
and Thayer's Creek. Further information
is needed before the boundary of the lands can
be determined properly.

64-B169 corner land in T. 2 S and 6
65-B169 in T. 2 S, 6 and 7 to
the bridge east of St. James St.

CONCESSION VIII

Approximate

T.H.B.R.C. PROPERTY

ICE HOUSE

63-B169

66-B170

Nelson Creek

ELECTRIC LIGHT WORKS

NICHOLS ST.

68 1/2

Nelson Creek

WATERFORD

WELLINGTON ST.

110-76

ST. JAMES

ST. JAMES TRESTLE BRIDGE

FREIGHT HOUSE

Grain Warehouse

Grain Warehouse

Grain Warehouse

Grain Warehouse

Grain Warehouse

Grain Warehouse

Grain Warehouse

Grain Warehouse

Grain Warehouse

Grain Warehouse

THEWARD BLOCK

ALICE BLOCK

190-115 87

BRIDGE

BRIDGE

BRIDGE

BRIDGE

BRIDGE

BRIDGE

80 re my
72
73
82
83
90
Lant flat.

NORFOLK C.
TOWNSEND T.
WATERFORD.

Please See Revised Tracing of this territory.

3540684

N¹/₂ N^o 4

WATERFORD POND

CONCESSION VIII

CONCESSION ROAD

N¹/₂ N^o 5

TRUNK
HAMILTON & BUFFALO RAILWAY

T.H. & B.
Engine House

T.H. & B. RY. CO'S PROPERTY

NF 69
3641+93.5

GRAVEL PIT

W. & B. RY. CO. 200

Sec Plan 3010 P.H. 12, 1"=50'
also Plan 3546 P.H. 12, 1"=300'

WATERFORD POND

NORFOLK CO.
TOWNSEND T²

See Contract Book 25 page 40, 1"=50'

PTS N^{os} 5 & 6

POCKET 1 FOLDER 3
CASE B

VS. 4611 - L.C. 5104

(G.S.R.R.) MAIN LINE. N^o 12.

5105

Plotted O.S. May 5, 1906.
Traced M.L. Feb. 2, 1907.
Corrected to Jan 1-1909 M.L.G.

TO GRAVEL PIT.
For Continuation See 3010 P.H. 12

CONCESSION VIII.

D118-B208

61-B169

55-208

T.O. 14299

3650

57-B208

54-208
53-208
N. 1/2 N. 2

151

N. 1/2 N. 23

25 Acres

RE 135

56-B208

See Plan 3010 P.H. 12, 1"=50'
also 3546 P.H. 12, 1"=300'

Line Comm
2017-83
No 36628

4 1/2 Acres

56-B169

RE 139

17 1/2 Acres

RE 140

58-B208 ✓

57-B208

RE 140

57-208 ✓

GRAVEL PIT.

Line Comm
2017-83
No 36628

20 Acres

60-B208 ✓

61-B208 ✓

18 1/2 Acres

NORFOLK CO.
TOWNSEND TP.

POCKET FOLDER 3
CASE B

3540028

TWP.

ROAD

WINDHAM

TOWN LINE

CONCESSION VIII

3710

3700

N.F. 70
3694 + 87.3

3690

3710

3700

3690

3680

Page 4 of 10
As shown on map

(H.B. 169) Ex. 100
Waiting for information

N 30 See End

N 21

51-208

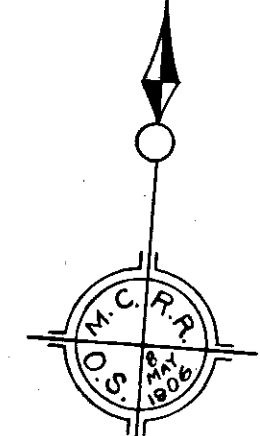
See Contract Book 20 p. 56, 1" = 50'
Also Contract Book 26 p. 128, 1" = 50'

N 51 52-208
N.W. 4 N. 2.

1073

N 52
53-208
N.E. 4 N. 2.

157



NORFOLK CO.
TOWNSEND TP.

35480704

CONCESSION ROAD

CONCESSION VIII

N.F. 71
3747 + 6 + 2

3740 + 00

3750

45

45-13169

3740

40

35

3745

3730

30

3740

3745

25

46-13169

3720

20

48-208

N. 1/2 N. 2

9

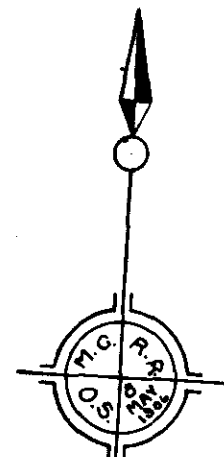
48

50-208

N. 1/2 N. 1

96

49



NORFOLK CO.
WINDHAM T.

POCKET 1 FOLDER 3

CASE B

Plotted O.S. May 8, 1906.
Traced A.L. Feb. 1, 1907.

VS. 4611 - L.C. 5104

(C.S.R.R.) MAIN LINE NO. 15.

Scale 100' = 1"

5108

354R0711

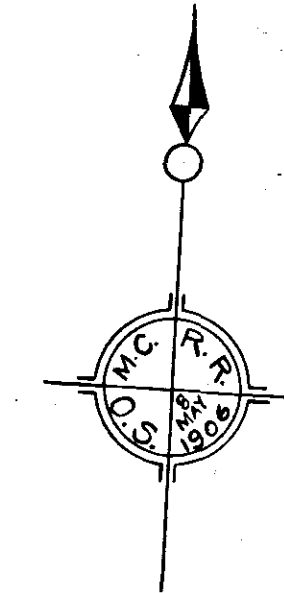
CONCESSION ROAD

CONCESSION VIII

47-208
N. 1/2 N. 4.

~~J33~~
46

48-208
N. 1/2 N. 3. 47
10



NORFOLK CO.
WINDHAM T.

35480718

CONCESSION ROAD

CONCESSION VIII

NE 1/4 N° 6

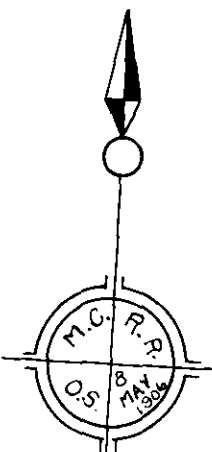
NW 1/4 N° 5

E 1/2 N° 5

N 1/2 N° 4

Ext. 3801 + 60

N.F. 72
3800 + 44.00



NORFOLK CO.
WINDHAM T.

354R6725

CONCESSION ROAD.

CONCESSION VIII

N.E.P. No. 8.

N. 1/2 No. 7.

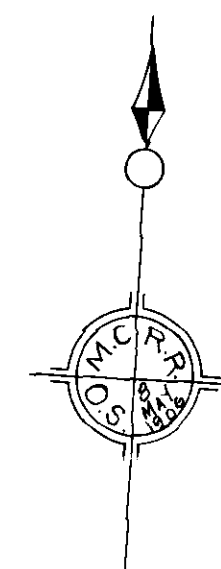
N.W. 1/4 No. 6.

N.F. 73
3553+171

Ext. 3854+90

ROAD

SIDE



NORFOLK CO.
WINDHAM TP.

ROCKY HILL
B

Sec 42

V.S. 4611 - L.C. 5104

(C.S.R.R.) MAIN LINE. No. 18.

Scale 100' = 1"

5111

35416731

CONCESSION ROAD

CONCESSION VIII

N. 1/2 N. 10

N. 1/2 N. 9

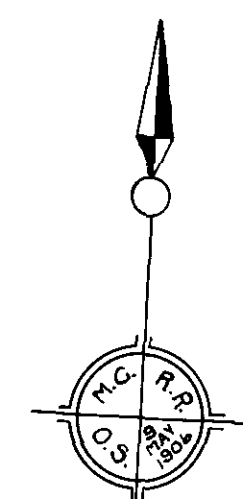
N. 1/2 N. 9

NWPTN 8

NEPTN 8

ROAD

COUNCIL



NORFOLK CO.
WINDHAM T.P.

POCKET 1 COVER 3
LINE B

V.S. 4611 - L.C. 5104

(C.S.R.R.) MAIN LINE. NO 19.

Scale 100' = 1"
5112

Plotted O.S. May 9, 1906.
Traced A.L. Feb. 5, 1907.

35480 733

CONCESSION ROAD

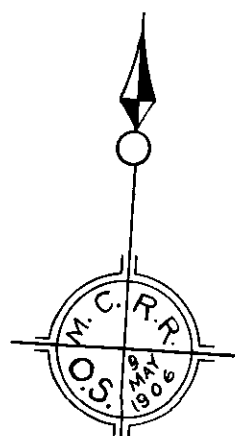
CONCESSION VIII

N.P. N^o 11

N. 1/2 N^o 10

N. F. 74
3906 + 01.0

SEC. 41 SEC. 42



NORFOLK C^o
WINDHAM T^o

POCKET 1
CASE B

354 R6745

CONCESSION ROAD.

CONCESSION VIII.

N^o 13.

33-203
24-205
W. 1/2 N^o 12.

33-203
24-205

E. 1/2 N^o 12.

Exact Loc. 3960+00

N. F. 75
3958+74.8

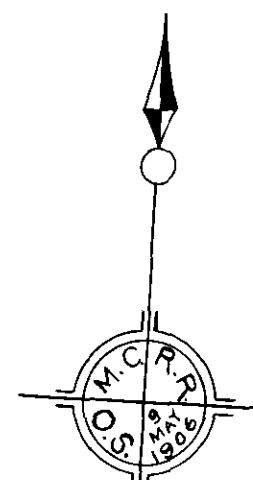
ROAD
SIDE

PS. 47+28.5
WINDHAM
PS. 48+88.4

PS. 45+25.2

Windham Station
3946+66.3

See Contract Book 27 p. 190, 1"=50' (No T.O.s)
Also Contract Book 33 p. 115, 1"=50' No T.O.s



NORFOLK C^o
WINDHAM T^p

See Plan 3361 P.H. II, 1"=50' T.O.

POCKET 1 FOLDER 3
CASE B

Set 41

354R6751

CONCESSION ROAD

CONCESSION VIII

N.W. 1/4 N. 15

N.E. 1/4 N. 15

N.W. PT. N. 14

N.E. PT. N. 14

N. 13

NORFOLK CO.
WINDHAM TP.

See Plan 3361 P.H. 11, 1"=50'

354R6 1588

CONCESSION ROAD

CONCESSION VIII

EX 1 4012 + 80

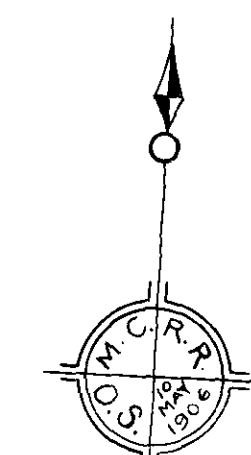
N.F. 76
4011 + 58.6

NE 1/4 N°17

NW 1/4 N°16

NE 1/4 N°16

NW 1/4 N°15



NORFOLK CO.
WINDHAM TP.

Sheet 1 of 3
B

V.S. 4611 - L.C. 5104

(C.S.R.R.) MAIN LINE. N°25.

Scale 100' = 1"

5116

35986765

CONCESSION

ROAD

CONCESSION VIII

ROAD

Water way under road

Farmer's watering place

Highway Under Crossing 19'4" roadway
Steel Beams in concrete, masonry abts

EX 4065+60

N.F. 77
4064+07.1

ROAD

Deeded to N.C. by
County of Norfolk

PC 500 9

4065

4060

4055

4051

N.E. 1/4 N. 19

N. 1/2 N. 18

N. 1/2 N. 18

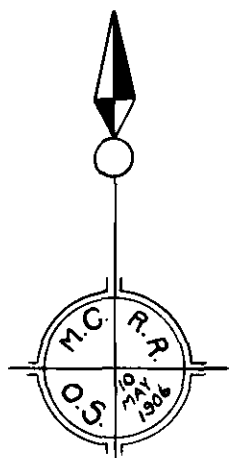
N.W. 1/4 N. 17

N.E. 1/4 N. 17

See Contract Book 27 page 19, 1"=100'

See Contract Book 22 page 3, 1"=50'

NORFOLK CO.
WINDHAM T.



POCKET 1 POCKET 3
B

Plotted O.S. May 10, 1906
Traced A.L. Feb. 7, 1907

V.S. 4611 - L.C. 5104

(C.S.R.R.) MAIN LINE, No. 24.

Scale 100' = 1"
5117

354 Re 171

S.W. 1/4 N. 20.

11-206
17-207
11-208

CONCESSION VII

15-208

Sec 40

Sec 41

CREEK

CONCESSION ROAD.

CONCESSION ROAD

N.W. 1/4 N. 20.

15-208
N.E. 1/4 N. 20.

CONCESSION VIII

N.W. 1/4 N. 19.

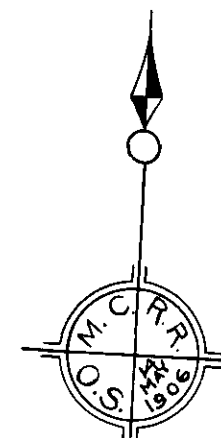
16-208
17-208

N.E. 1/4 N. 19.

17-208
18-208

See Contract Book 22 page 3. 1"=50'

NORFOLK CO.
WINDHAM TP.



POCK 1 3
B

V.S. 4611 - L.C. 5104

(C.S.R.R.) MAIN LINE. N. 25.

Scale 100' = 1"

5118

35426778

CONCESSION VII

W. 1/2 N. 22

E. 1/2 N. 22

S.W. 1/4 S.W. 1/4 N. 21

S.W. 1/4 N. 21

S.E. 1/4 N. 21

CONCESSION ROAD

NORFOLK CO.
WINDHAM T.P.

POCKET 1 FOLDER 3
CASE B

